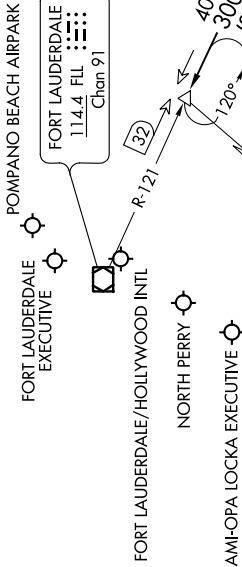


SE-3, 03 DEC 2020 to 31 DEC 2020

- MIAMI APP CON 133.775 285.6
- FL ATIS 135.0
- FXE ATIS 119.85
- HWO ATIS 135.475
- OPF ATIS 125.9
- PMP ATIS 120.55



DEKAL
 N25°51.03'-W79°37.88'
 VERTICAL NAVIGATION
 PLANNING INFORMATION
 Turbojets expect 6000 250K
 ATC may assign 5000 250K
 All other aircraft expect 4000

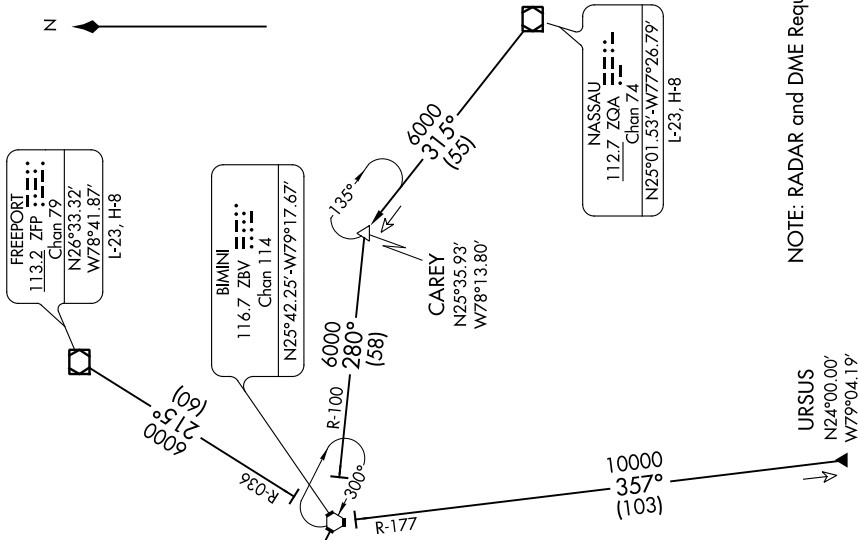
ARRIVAL ROUTE DESCRIPTION

FREEPORT TRANSITION (ZFP DEKAL5): From over ZFP VOR/DME on ZFP R-215 and ZBV R-036 to ZBV VORTAC, then on ZBV R-300 to DEKAL. Thence. . . .

NASSAU TRANSITION (ZQA DEKAL5): From over ZQA VOR/DME on ZGA R-315 to CAREY, then on ZBV R-100 to ZBV VORTAC, then on ZBV R-300 to DEKAL. Thence. . . .

URSUS TRANSITION (URSUS DEKAL5): From over URSUS on ZBV R-177 to ZBV VORTAC, then on ZBV R-300 to DEKAL. Thence. . . .

. . . .from over DEKAL expect RADAR vectors to final approach course.



NOTE: RADAR and DME Required.

NOTE: Chart not to scale.

SE-3, 03 DEC 2020 to 31 DEC 2020