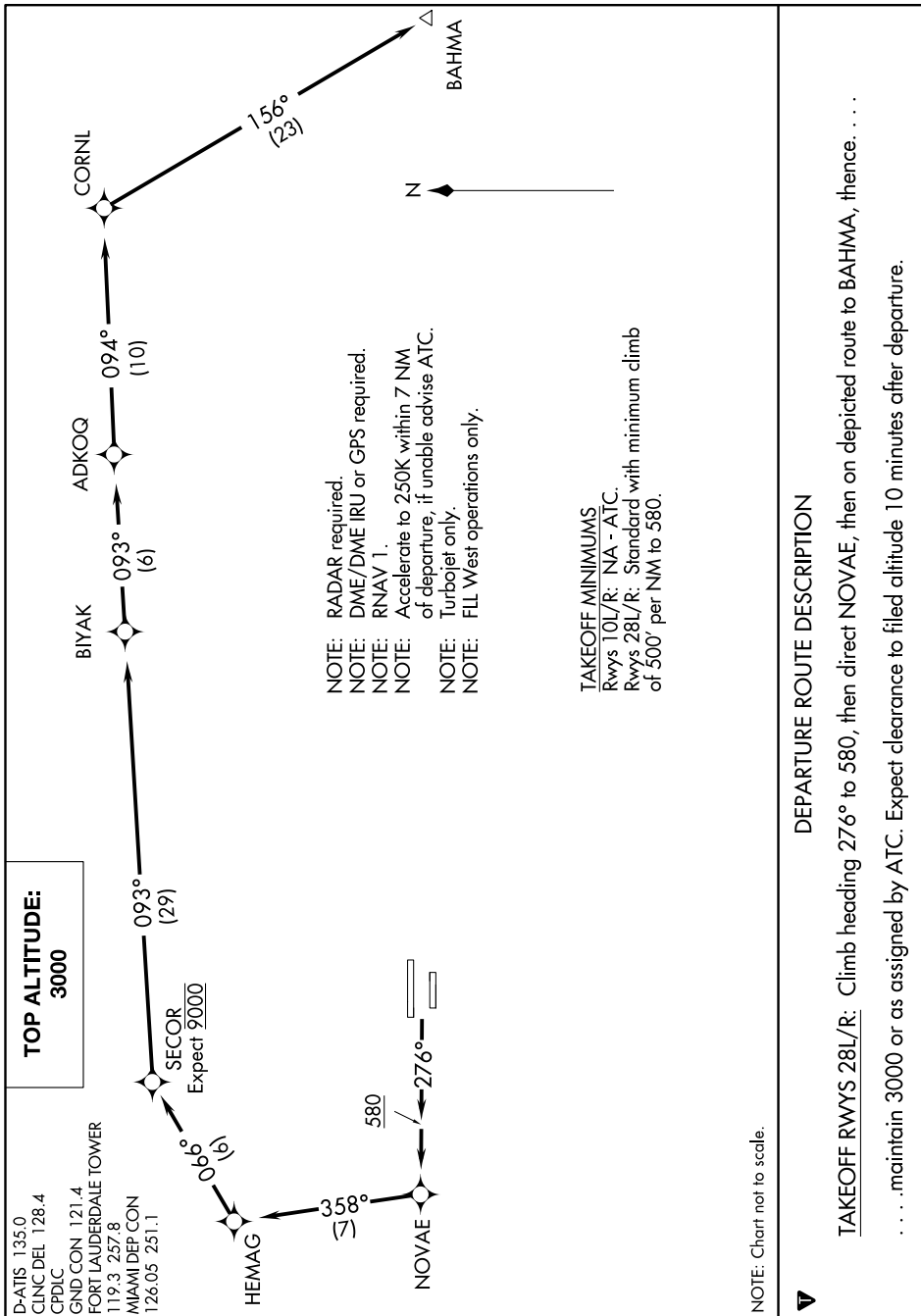


SE-3, 03 DEC 2020 to 31 DEC 2020



BAHMA FIVE DEPARTURE (RNAV)

DEPARTURE ROUTE DESCRIPTION

TAKEOFF RWYS 28L/R: Climb heading 276° to 580, then direct NOVAE, then on depicted route to BAHMA, thence. . . .
. . . . maintain 3000 or as assigned by ATC. Expect clearance to filed altitude 10 minutes after departure.

NOTE: Chart not to scale.

SE-3, 03 DEC 2020 to 31 DEC 2020