

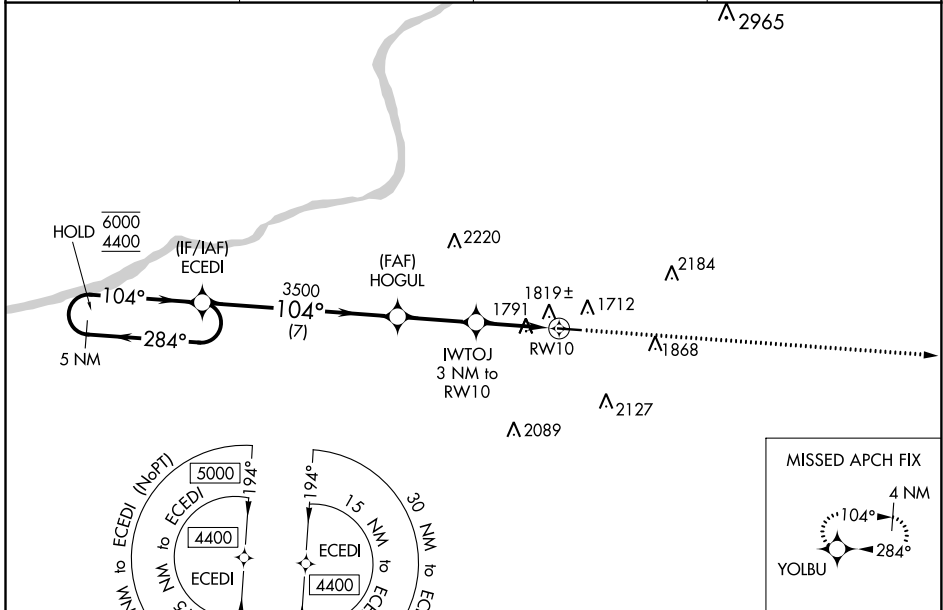
WAAS CH <b>86240</b> <b>W10A</b>	APP CRS <b>104°</b>	Rwy Idg TDZE Apt Elev	<b>4801</b> <b>1603</b> <b>1603</b>
--	------------------------	-----------------------------	---

# RNAV (GPS) RWY 10

HAZLETON RGNL (HZZ)

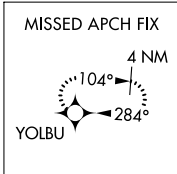
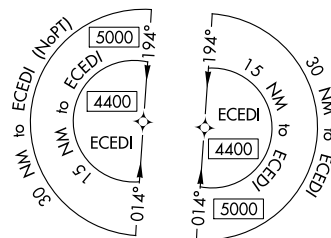
RNP APCH.	<p><b>MISSED APPROACH:</b> Climb to 4600 direct YOLBU and hold.</p>
<p><b>▽</b> <b>▲</b> Rwy 10 helicopter visibility reduction below 3/4 SM NA. For uncompensated Baro-VNAV systems, LNAV/VNAV NA below -18°C or above 54°C.</p>	

AWOS-3 <b>119.975</b>	WILKES-BARRE APP CON <b>126.3 256.7</b>	CLNC DEL <b>121.7</b>	UNICOM <b>123.0 (CTAF) 0</b>
--------------------------	--	--------------------------	---------------------------------

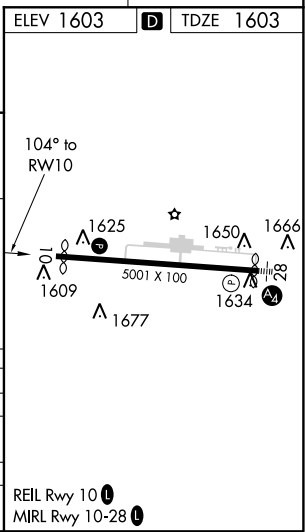
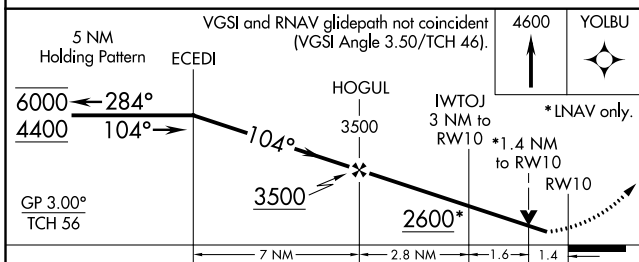


NE-4, 03 DEC 2020 to 31 DEC 2020

NE-4, 03 DEC 2020 to 31 DEC 2020



ELEV 1603	<b>D</b> TDZE 1603
-----------	--------------------



CATEGORY	A	B	C	D
LPV DA		2059-1 <sup>3</sup> / <sub>8</sub>	456 (500-1 <sup>3</sup> / <sub>8</sub> )	
LNAV/VNAV DA		2097-1 <sup>3</sup> / <sub>8</sub>	494 (500-1 <sup>3</sup> / <sub>8</sub> )	
LNAV MDA	2080-1	477 (500-1)	2080-1 <sup>3</sup> / <sub>8</sub>	477 (500-1 <sup>3</sup> / <sub>8</sub> )
<b>C</b> CIRCLING	2140-1 537 (600-1)	2400-1 797 (800-1)	2480-2 <sup>1</sup> / <sub>2</sub> 877 (900-2 <sup>1</sup> / <sub>2</sub> )	2520-3 917 (1000-3)

REIL Rwy 10 **0**  
MIRL Rwy 10-28 **0**