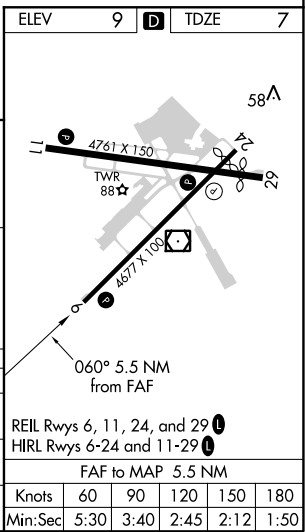
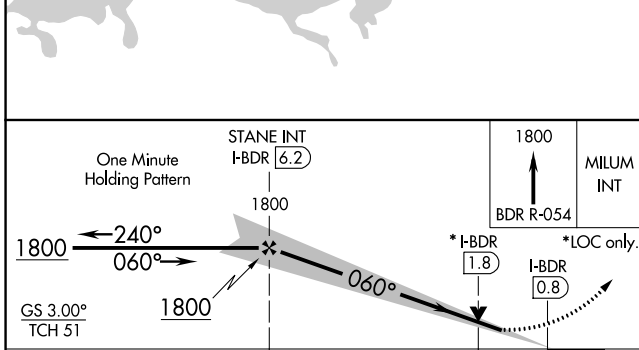
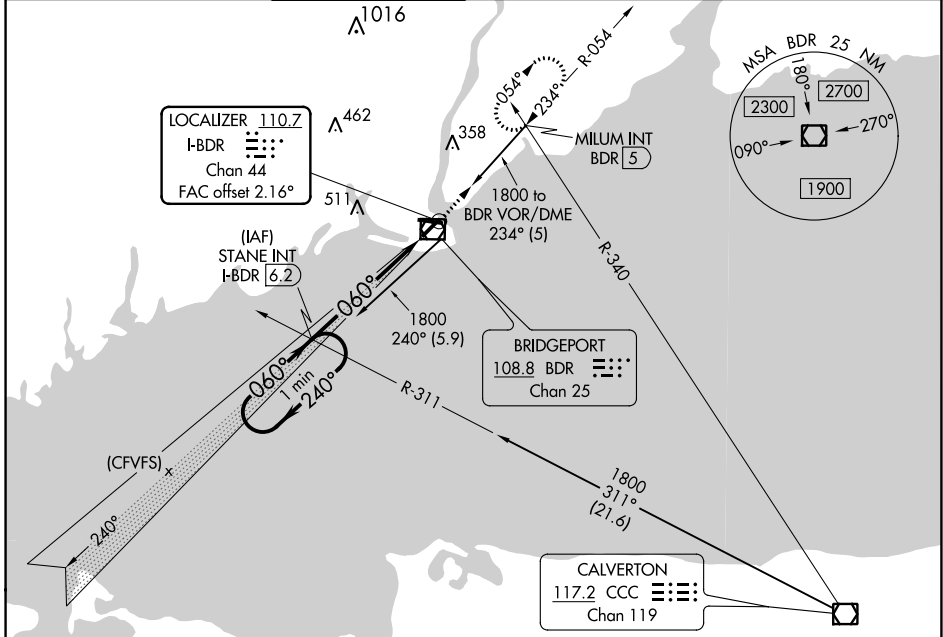


LOC/DME I-BDR 110.7 Chan 44	APP CRS 060°	Rwy Idg TDZE Apt Elev	4677 7 9
--	------------------------	-----------------------------	-------------------------------------

ILS or LOC RWY 6
IGOR I SIKORSKY MEMORIAL (BDR)

▽ Autopilot coupled approach NA below 350. ▲ When VGSI inop, Circling Rwy 11 NA at night.	MISSED APPROACH: Climb to 1800 on the BDR VOR/DME R-054 to MILUM INT and hold.
--	--

ATIS 119.15	NEW YORK APP CON 124.075 343.65	BRIDGEPORT TOWER* 120.9 (CTAF) 257.8	GND CON 121.75 257.8	CLNC DEL 121.75	CLNC DEL 124.075 (When twr closed)	UNICOM 123.0
-----------------------	---	---	--------------------------------	---------------------------	---	------------------------



CATEGORY	A	B	C	D
S-ILS 6		257- ³ / ₄	250 (300- ³ / ₄)	
S-LOC 6		380-1	373 (400-1)	
C CIRCLING	480-1 471 (500-1)	620-1 611 (700-1)	820-2 ¹ / ₂ 811 (900-2 ¹ / ₂)	820-2 ³ / ₄ 811 (900-2 ³ / ₄)

ELEV	9	D	TDZE	7	
Knots	60	90	120	150	180
Min:Sec	5:30	3:40	2:45	2:12	1:50

NE-1, 03 DEC 2020 to 31 DEC 2020

NE-1, 03 DEC 2020 to 31 DEC 2020