

# RNAV (GPS) X RWY 22L

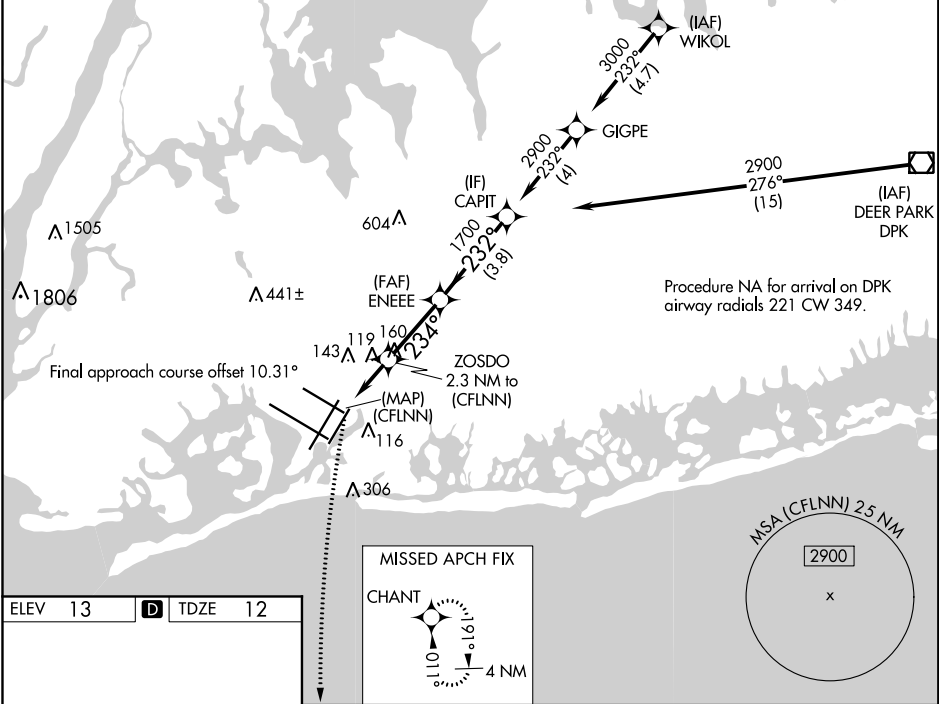
JOHN F KENNEDY INTL (JFK)

APP CRS	Rwy Idg	<b>8400</b>
<b>234°</b>	TDZE	<b>12</b>
	Apt Elev	<b>13</b>

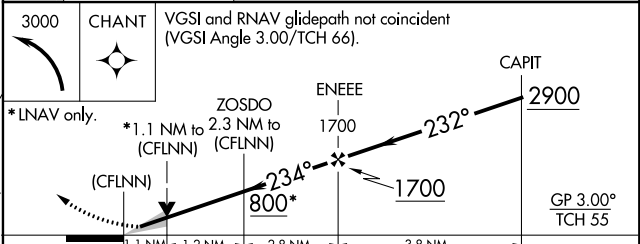
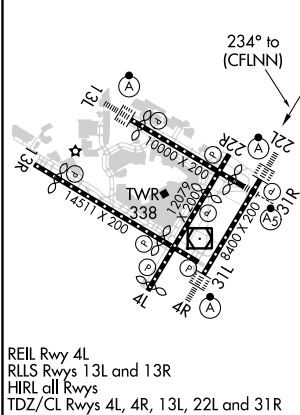
RNP APCH.  
 ▽ LNAV procedure NA during simultaneous operations. Use of FD or AP providing RNAV track guidance required during simultaneous operations. For uncompensated Baro-VNAV systems, LNAV/VNAV NA below -14°C or above 54°C. Simultaneous approach authorized. For inop ALS, increase LNAV/VNAV all Cats visibility to RVR 6000.

ALSF-2  
  
 MISSED APPROACH: Climbing left turn to 3000 direct CHANT.

D-ATIS (ARR/DEP) (ARR-NE) (ARR-SW)	NEW YORK APP CON	KENNEDY TOWER Rwys 4R/22L and 13L/31R Rwys 4L/22R and 13R/31L	<b>119.1 281.55</b>	GND CON	CLNC DEL	CPDLC
<b>128.725 117.7 115.4</b>	<b>128.125 269.0</b>		<b>123.9 281.55</b>	<b>121.9 348.6</b>	<b>135.05 348.6</b>	



ELEV 13	<b>D</b>	TDZE 12
---------	----------	---------



CATEGORY	A	B	C	D
LNAV/VNAV DA	413/40		401 (400-¾)	
LNAV MDA	440/24	428 (500-½)	440/40	428 (500-¾)
<b>C</b> CIRCLING	640-1	627 (700-1)	680-1¾ 667 (700-1¾)	680-2 667 (700-2)

NE-2, 03 DEC 2020 to 31 DEC 2020

NE-2, 03 DEC 2020 to 31 DEC 2020