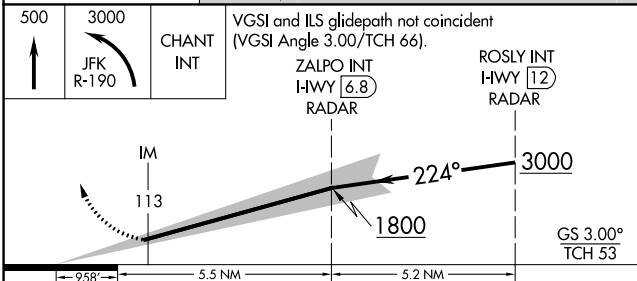
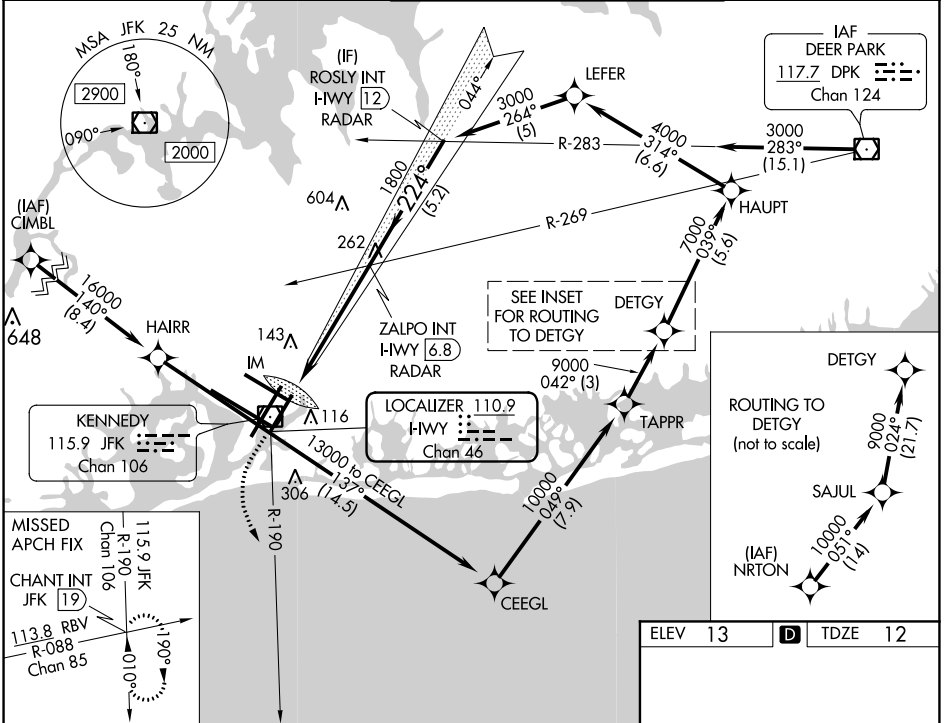


LOC/DME I-HWY 110.9 Chan 46	APP CRS 224°	Rwy ldg 8400 TDZE 12 Apt Elev 13
---	------------------------	---

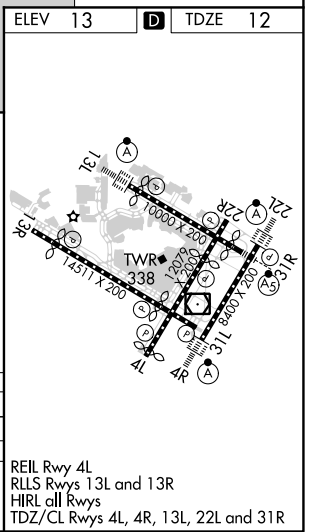
ILS RWY 22L (CAT II & III)

JOHN F KENNEDY INTL (JFK)

RNAV 1-GPS or RADAR required for procedure entry. From CIMBL, NRTON: RNAV 1-GPS required.			ALSIF-2 	MISSED APPROACH: Climb to 500 then climbing left turn to 3000 on JFK VOR/DME R-190 to CHANT INT/19 DME and hold.		
<p>Simultaneous approach authorized.</p>						
D-ATIS (ARR/DEP) (ARR-NE) (ARR-SW) 128.725 117.7 115.4	NEW YORK APP CON 128.125 269.0	KENNEDY TOWER Rwys 4R/22L and 13L/31R 119.1 281.55 Rwys 4L/22R and 13R/31L 123.9 281.55		GND CON 121.9 348.6	CLNC DEL 135.05 348.6	CPDLC



500	3000	VGSi and ILS glidepath not coincident (VGSi Angle 3.00°/TCH 66).	
	JFK R-190	CHANT INT	
		ZALPO INT I-HWY 6.8 RADAR	ROSLY INT I-HWY 12 RADAR
			GS 3.00° TCH 53
CATEGORY	A	B	C
S-ILS 22L	CAT II RA 113/12 100 DA 112		
S-ILS 22L	CAT III RVR 06		



NE-2, 03 DEC 2020 to 31 DEC 2020

NE-2, 03 DEC 2020 to 31 DEC 2020