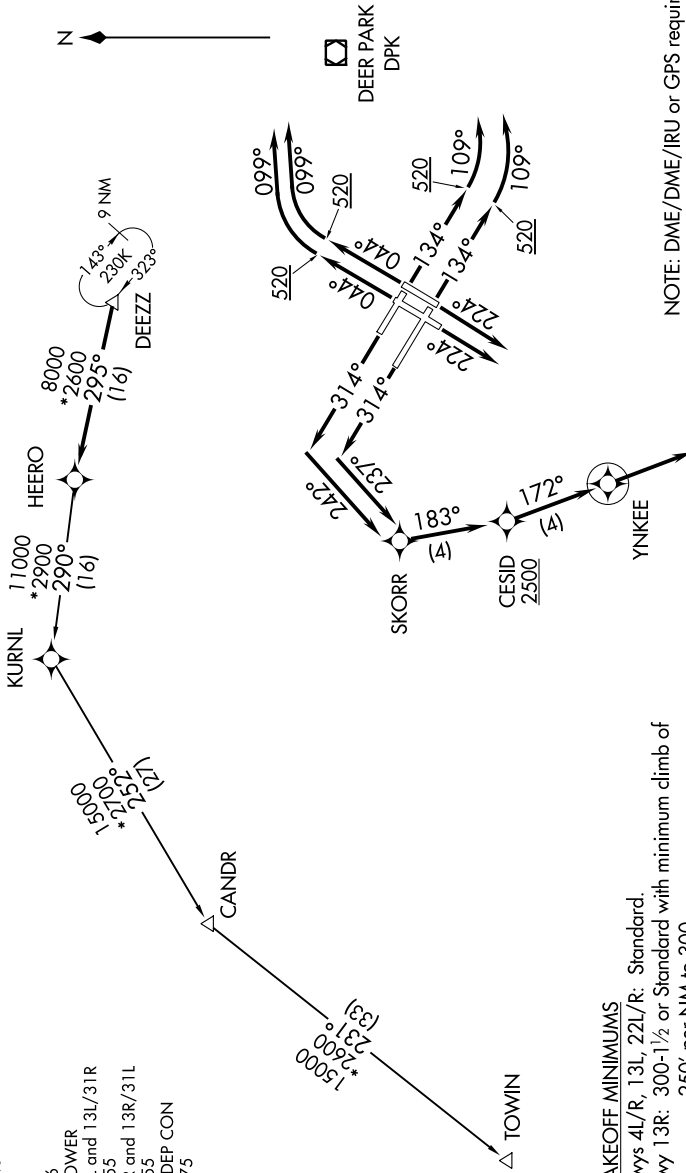


DEZZ FIVE DEPARTURE (RNAV)

NE-2, 03 DEC 2020 to 31 DEC 2020

D-ATIS 128.725
CLNC DEL 135.05 348.6
CPDIC
GND CON 121.9 348.6
KENNEDY TOWER
Rwys 4R/22L and 13L/31R 119.1 281.55
Rwys 4L/22R and 13R/31L 123.9 281.55
NEW YORK DEP CON 135.9 353.75

**TOP ALTITUDE:
5000**



TAKEOFF MINIMUMS

Rwys 4L/R, 13L, 22L/R: Standard.

Rwy 13R: 300-1/2 or Standard with minimum climb of 250' per NM to 300.

Rwys 31L/R: Standard with minimum climb of 500' per NM to 1400.

- NOTE: DME/DME/IRU or GPS required.
- NOTE: Radar Required.
- NOTE: RNAV 1.
- NOTE: TOWIN transition ATC assigned only.

(NARRATIVE ON FOLLOWING PAGE)

NOTE: Chart not to scale.

NE-2, 03 DEC 2020 to 31 DEC 2020

DEZZ FIVE DEPARTURE (RNAV)