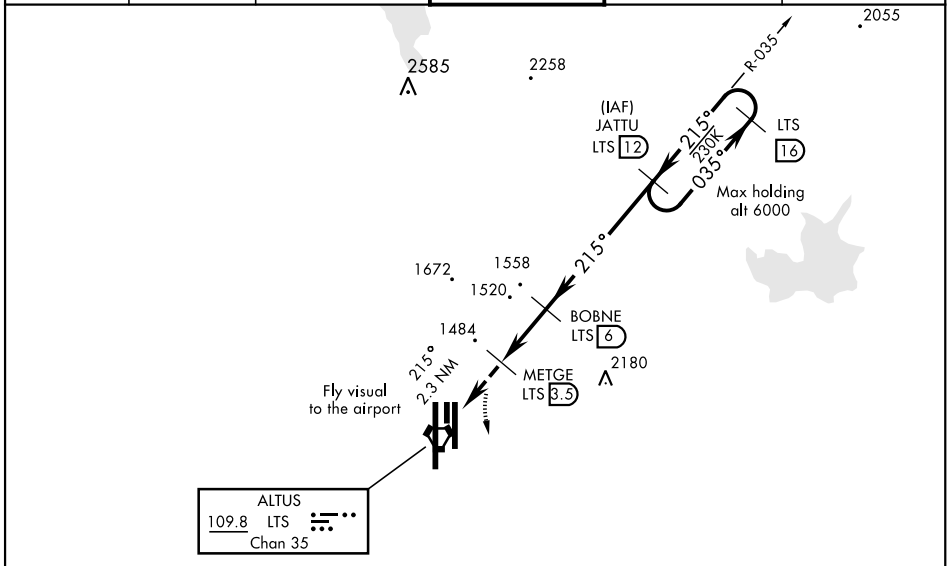


VOR or TACAN-C

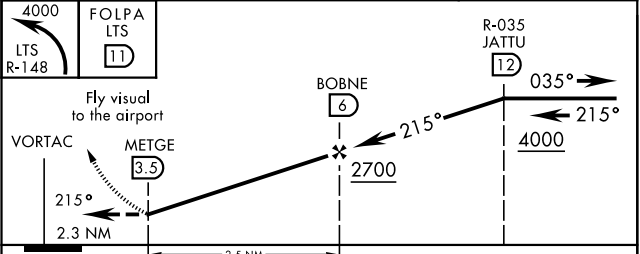
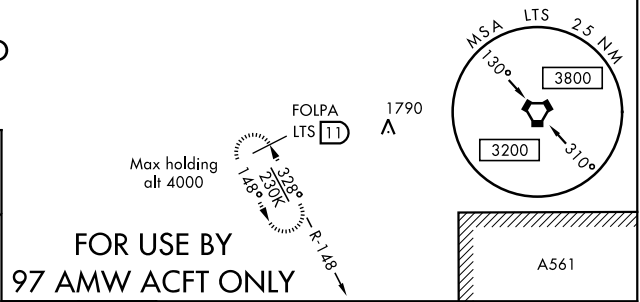
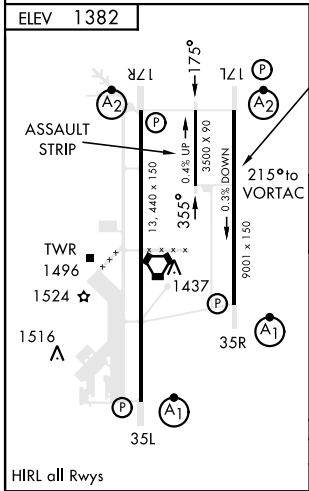
VORTAC LTS 109.8 Chan 35	APCH CRS 215°	Rwy Idg TDZE N/A Arprt Elev 1382	AL-482 [USAF]	ALTUS AFB (KLTS)
--	-------------------------	---	---------------	------------------

▼ Circling not authorized W of Rwy 17R-35L.
MISSED APPROACH: Climbing left turn to 4000, intercept LTS VORTAC R-148 to FOLPA and hold.

ATIS ★ 109.8 273.5	FORT WORTH CENTER 133.5 350.35	ALTUS APP CON 125.1 353.7	ALTUS TOWER ★ 119.65 254.4	GND CON 121.85 275.8	CLNC DEL 120.65 284.7
------------------------------	--	-------------------------------------	--------------------------------------	--------------------------------	---------------------------------



ATC RADAR REQUIRED
DME REQUIRED
EMERG SAFE ALT 100 NM 4900



CATEGORY	D	E
<input checked="" type="checkbox"/> CIRCLING	1940-3 558 (600-3)	2100-3 718 (800-3)

VOR or TACAN-C

SC-1, 03 DEC 2020 to 31 DEC 2020

SC-1, 03 DEC 2020 to 31 DEC 2020