

ALTUS, OKLAHOMA

RNAV (GPS) Z RWY 35R

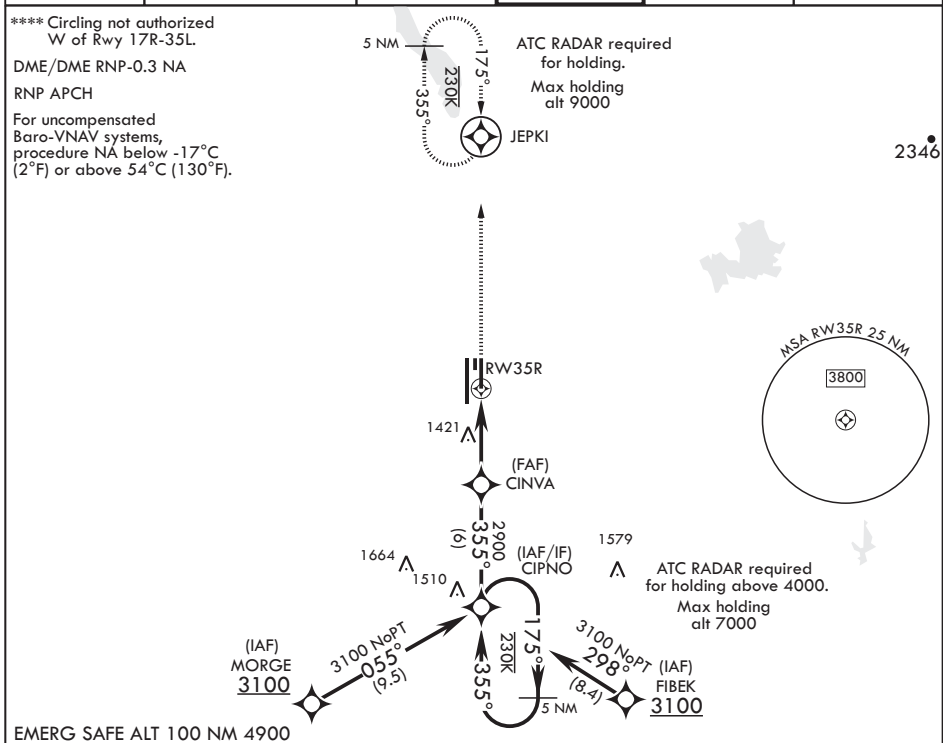
WAAS CH 41169 W35B	APCH CRS 355°	Rwy ldg TDZE 1362 Arprt Elev 1382
--------------------------	------------------	---

AL-482 (USAF)

ALTUS AFB (KLTS)

<p>V * When ALS inop increase CAT ABCDE RVR to 40, vis to 3/4 mile; RVR 18 authorized with use of FD or AP or HUD to DA. ** When ALS inop increase CAT ABCDE RVR to 40, vis to 3/4 mile. *** When ALS inop increase CAT AB RVR to 55, vis to 1 mile; CAT CDE RVR 50, vis to 1 mile.</p>	<p>ALSIF-1</p>	<p>MISSED APPROACH: Climb to 4000 direct JEPKI and hold.</p>
--	----------------	--

ATIS★ 109.8 273.5	FORT WORTH CENTER 133.5 350.35	APP CON 125.1 353.7	TOWER★ 119.65 254.4	GND CON 121.85 275.8	CLNC DEL 120.65 284.7
----------------------	-----------------------------------	------------------------	------------------------	-------------------------	--------------------------



EMERG SAFE ALT 100 NM 4900

<p>GP 3.00° TCH 53</p> <p>3100 ← 175° 355° →</p> <p>CIPNO</p> <p>VGSI and RNAV glidepath not coincident.</p> <p>4000</p> <p>JEPKI</p> <p>ELEV 1382</p> <p>TDZE 1362</p> <p>† LNAV only</p> <p>† 0.9 NM to RW35R</p> <p>RW35R</p> <p>4.7 NM</p>					
CATEGORY	A	B	C	D	E
LPV DA*	1562/24		200	(200-1/2)	
LNAV/VNAV DA**	1612/24		250	(300-1/2)	
LNAV MDA***	1700/24	338 (400-1/2)	1700/26	338 (400-1/2)	
C CIRCLING****	1780-1 398 (400-1)	1840-1 458 (500-1)	1860-1 1/2 478 (500-1 1/2)	1940-2 558 (600-2)	2100-2 1/2 718 (800-2 1/2)

HIRL all Rwys

35L 355° to RW35R

ALTUS, OKLAHOMA

34°40'N - 99°16'W

ALTUS AFB (KLTS)

Amdt 1 20JUN19

RNAV (GPS) Z RWY 35R

SC-1, 03 DEC 2020 to 31 DEC 2020

SC-1, 03 DEC 2020 to 31 DEC 2020