

ALTUS, OKLAHOMA

RNAV (RNP) X RWY 17R

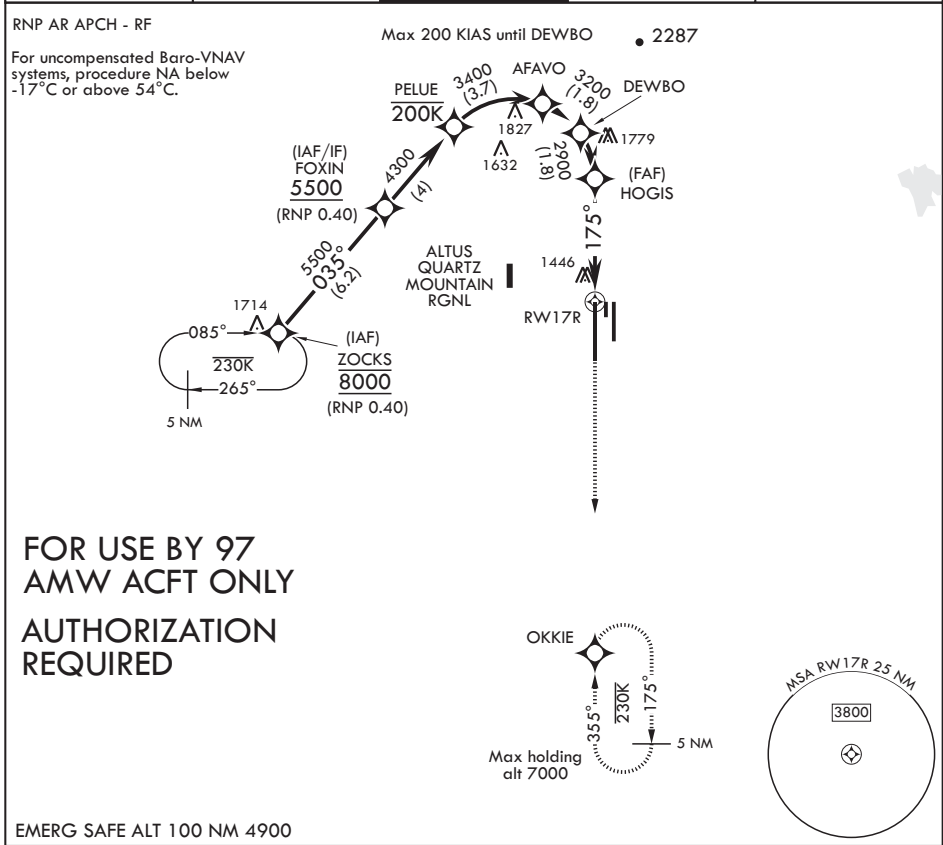
APCH CRS 175°	Rwy Idg 13,440
	TDZE 1379
	Arpt Elev 1382

AL-482 (USAF)

ALTUS AFB (KLTS)

<p>▼ * When ALS inop, increase RVR to 45, vis to 7/8 mile. ** When ALS inop, increase RVR to 60, vis to 1 1/8 miles.</p>	<p>SALS</p>	<p>MISSED APPROACH: Climb to 4000 on track 175° to OKKIE and hold.</p>

ATIS ★ 109.8 273.5	APP CON 125.1 353.7	TOWER ★ 119.65 254.4	GND CON 121.85 275.8	CLNC DEL 120.65 284.7
------------------------------	-------------------------------	--------------------------------	--------------------------------	---------------------------------



**FOR USE BY 97
AMW ACFT ONLY
AUTHORIZATION
REQUIRED**

FOXIN 5500	PELUE 4300	AFAVO 3400	DEWBO 3200	HOGIS 2900	RWY17R	4000 ↑tr 175°	OKKIE	ELEV 1382 175° to RWY17R	TDZE 1379
<p>GP 3.00° TCH 53</p> <p>035°</p> <p>175°</p> <p>4.6 NM</p>						<p>0.4% DOWN</p> <p>175°</p> <p>3800 x 90</p> <p>355°</p> <p>13,440 x 150</p> <p>0.3% DOWN</p> <p>9001 x 150</p> <p>35R</p> <p>35L</p> <p>ASSAULT STRIP</p> <p>BCN TWR</p>			
CATEGORY	A	B	C	D					
RNP 0.10 DA*	1679/40	300	(300-3/4)						
RNP 0.30 DA**	1771/45	392	(400-7/8)						

ALTUS, OKLAHOMA
Orig 03DEC20

34°40'N - 99°16'W

ALTUS AFB (KLTS)

RNAV (RNP) X RWY 17R

SC-1, 03 DEC 2020 to 31 DEC 2020

SC-1, 03 DEC 2020 to 31 DEC 2020