


ALTUS, OKLAHOMA

ILS Z or LOC RWY 17R

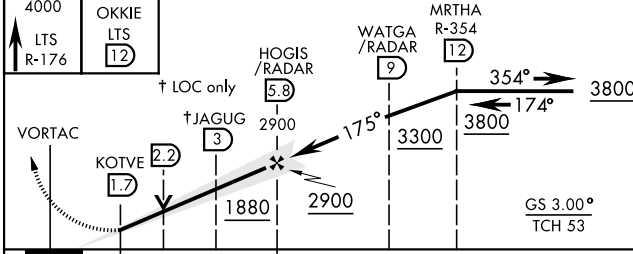
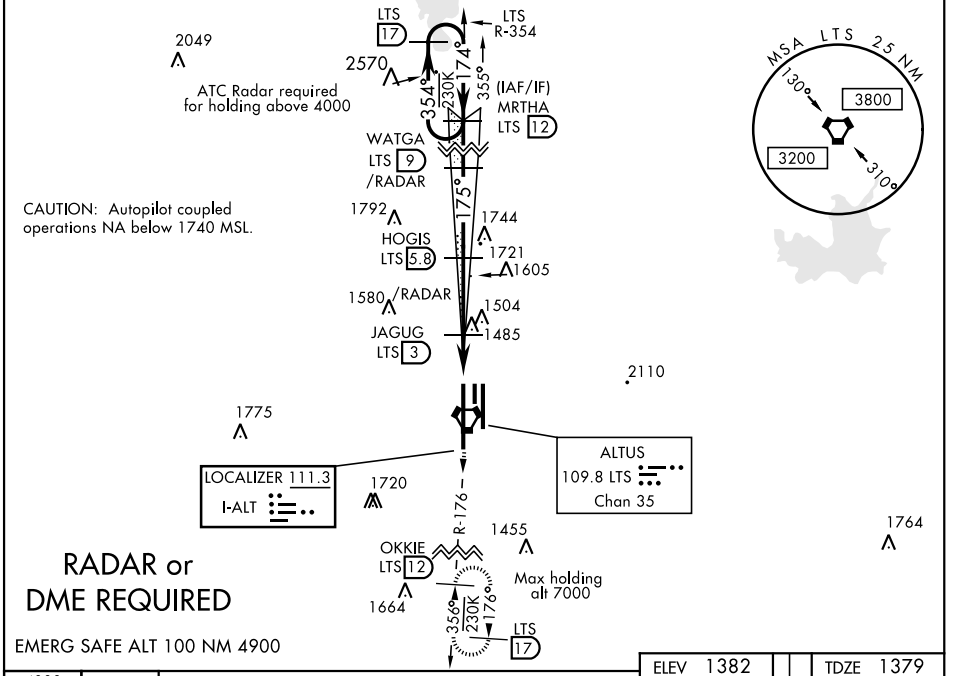
LOC I-ALT 111.3	APCH CRS 175°	Rwy Idg 13,440 TDZE 1379 Arprt Elev 1382	AL-482 [USAF]	ALTUS AFB (KLTS)
---------------------------	-------------------------	---	---------------	------------------

▼ * When ALS inop, increase CAT ABCDE RVR to 55 and vis to 1 mile.
 ** When ALS inop, increase CAT AB RVR to 55 and vis to 1 mile, CAT CDE vis to 1/2 mile.
 *** Circling not authorized W of Rwy 17R-35L.

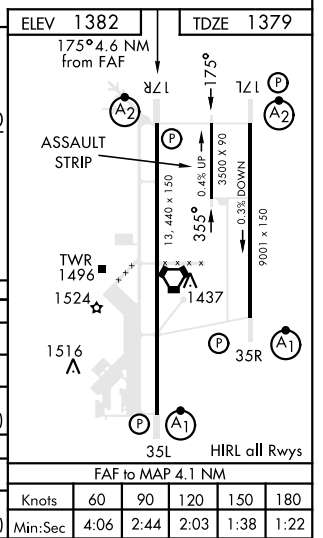
SALSF 

MISSED APPROACH: Climb to 4000, intercept LTS VORTAC R-176 to OKKIE and hold.

ATIS ★ 109.8 273.5	FORT WORTH CENTER 133.5 350.35	ALTUS APP CON 125.1 353.7	ALTUS TOWER ★ 119.65 254.4	GND CON 121.85 275.8	CLNC DEL 120.65 284.7
------------------------------	--	-------------------------------------	--------------------------------------	--------------------------------	---------------------------------



CATEGORY	A	B	C	D	E
S-ILS 17R	1579/40		200	(200-3/4)	
S-LOC 17R*	1760/40	381 (400-3/4)	1760/45		381 (400-2/3)
CIRCLING***	1780-1 398 (400-1)	1840-1 458 (500-1)	1860-1 1/2 478 (500-1 1/2)	1940-2 558 (600-2)	2100-2 1/2 718 (800-2 1/2)
WITHOUT LAST STEPDOWN FIX					
S-LOC 17R**	1880/40	501 (500-3/4)	1880-1 1/4	501	(500-1 1/2)
CIRCLING***	1880-1	498 (500-1)	1880-1 1/2 498 (500-1 1/2)	1940-2 558 (600-2)	2100-2 1/2 718 (800-2 1/2)



ALTUS, OKLAHOMA
Orig 16JUL20

34° 40' N-99° 16' W

ALTUS AFB (KLTS)

ILS Z or LOC RWY 17R

SC-1, 03 DEC 2020 to 31 DEC 2020

SC-1, 03 DEC 2020 to 31 DEC 2020