

MIKAA ONE DEPARTURE (RNAV)

D-ATIS 126.0
CLNC DEL 118.0
CPDLC 118.0
GND CON 120.8 (EAST)
132.25 (WEST)
SOCAL DEP CON 133.85 346.35

TOP ALTITUDE:
14000

DEPARTURE ROUTE DESCRIPTION

TAKEOFF RUNWAY 2L: Climb heading 016°, then direct LIJON, then on track 058° to CHOAK, then on depicted route to MIKAA thence. . . .
. . . . (transition). Maintain 14000, expect filed altitude within 10 minutes of departure.

HHERO TRANSITION (MIKAA1.HHERO)

TAKEOFF MINIMUMS

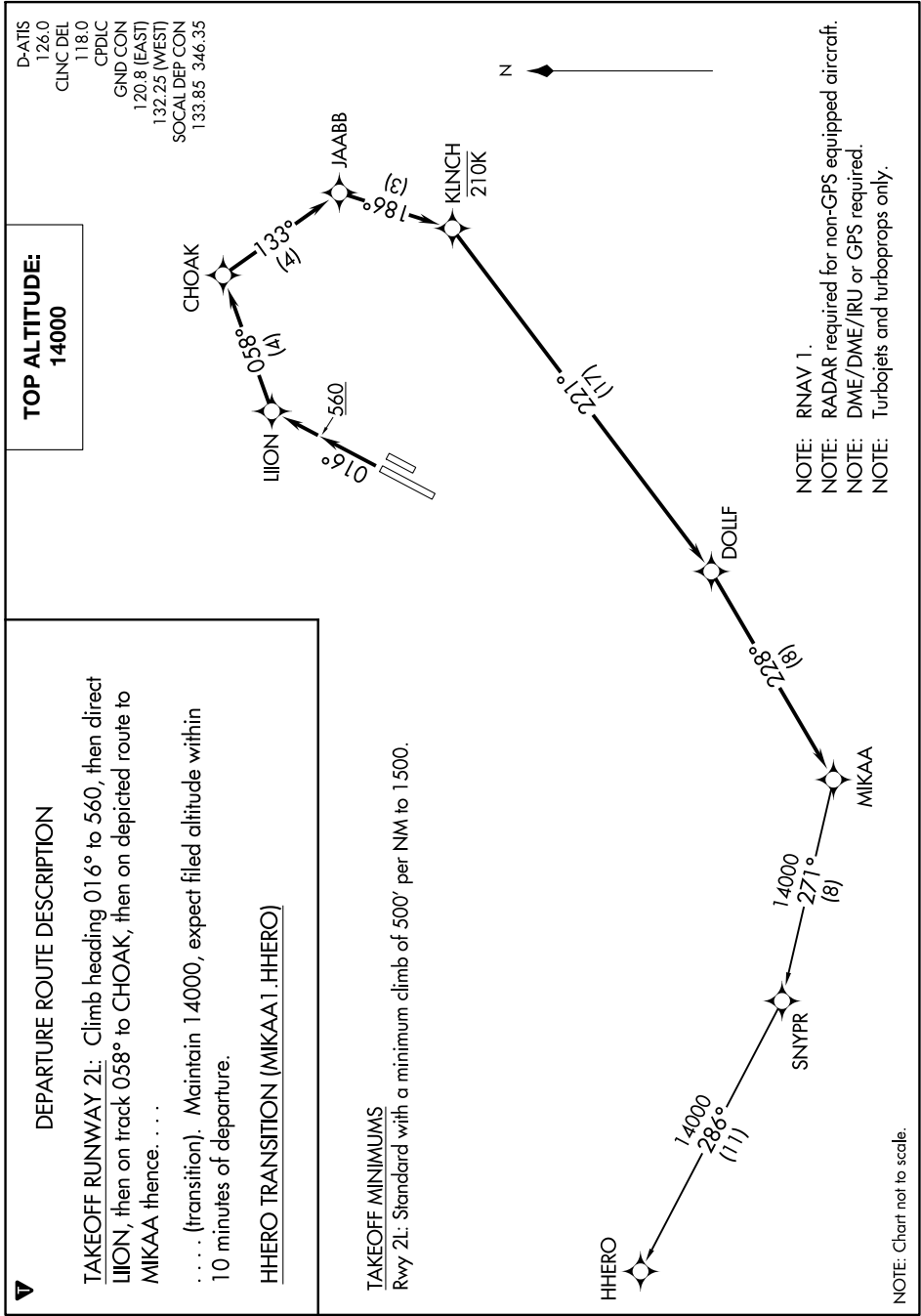
Rwy 2L: Standard with a minimum climb of 500' per NM to 1500.



MIKAA ONE DEPARTURE (RNAV)

SW-3, 03 DEC 2020 to 31 DEC 2020

SW-3, 03 DEC 2020 to 31 DEC 2020



- NOTE: RNAV 1.
- NOTE: RADAR required for non-GPS equipped aircraft.
- NOTE: DME/DME/IRU or GPS required.
- NOTE: Turboprops and turboprops only.

NOTE: Chart not to scale.