

LOC/DME I-SNA 111.75 Chan 54(Y)	APP CRS 016°	Rwy Idg 5701 TDZE 56 Apt Elev 56
--	------------------------	---

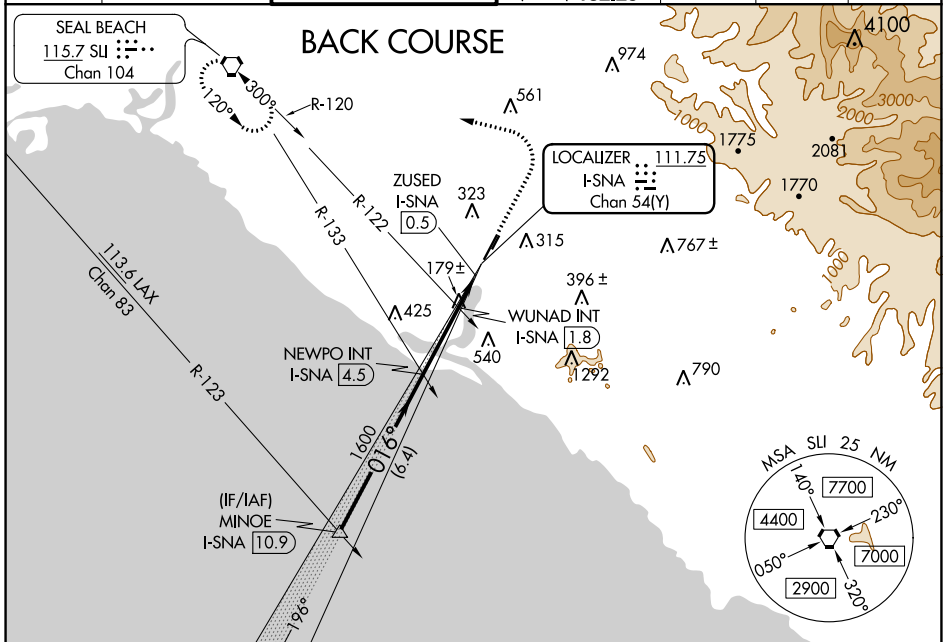
LOC BC RWY 2L

JOHN WAYNE AIRPORT-ORANGE COUNTY (SNA)

⚠ When local altimeter setting not received, use Fullerton altimeter setting and increase all MDA 40 feet, increase S-2L Cats C and D and Circling Cat C visibility ¼ SM, and increase WUNAD fix S-2L Cats C and D visibility ½ SM; Circling Cat C visibility ¼ SM.

MISSED APPROACH: Climb to 800 then climbing left turn to 2600 direct SLI VORTAC and hold.

D-ATIS 126.0	SOCAL APP CON 121.3 263.1	JOHN WAYNE TOWER* 126.8 (CTAF) 343.625	GND CON (EAST) 120.8 (WEST) 132.25	CLNC DEL 118.0	CPDLC	UNICOM 122.95
------------------------	-------------------------------------	---	--	--------------------------	-------	-------------------------



MINOE I-SNA 10.9		VGS and descent angles not coincident (VGS Angle 3.00/TCH 72). *600 when using Fullerton altimeter setting.		800	2600	SLI
3000		NEWPO INT I-SNA 4.5		1600		016°
Disregard GS indications.		WUNAD INT I-SNA 1.8		*560		3.00° TCH 55
6.4 NM		2.7 NM		1.3 NM		0.7
CATEGORY	A	B	C	D		
S-2L	560-1	504 (600-1)	560-1 3/8	504 (600-1 3/8)		
C CIRCLING	640-1	584 (600-1)	840-2 1/4 784 (800-2 1/4)	1160-3 1104 (1200-3)		
WUNAD FIX MINIMUMS (DUAL VOR RECEIVERS OR DME REQUIRED)						
S-2L	480-1	424 (500-1)	480-1 1/4	424 (500-1 1/4)		
C CIRCLING	640-1	584 (600-1)	840-2 1/4 784 (800-2 1/4)	1160-3 1104 (1200-3)		

ELEV 56	D TDZE 56
---------	------------------

REIL Rwy 20L
MIRL Rwy 2R-20L
HIRL Rwy 2L-20R

TWR

118

104

210±

016° 4.7 NM from FAF

FAF to MAP 4 NM

Knots	60	90	120	150	180
Min:Sec	4:00	2:40	2:00	1:36	1:20

SW-3, 03 DEC 2020 to 31 DEC 2020

SW-3, 03 DEC 2020 to 31 DEC 2020