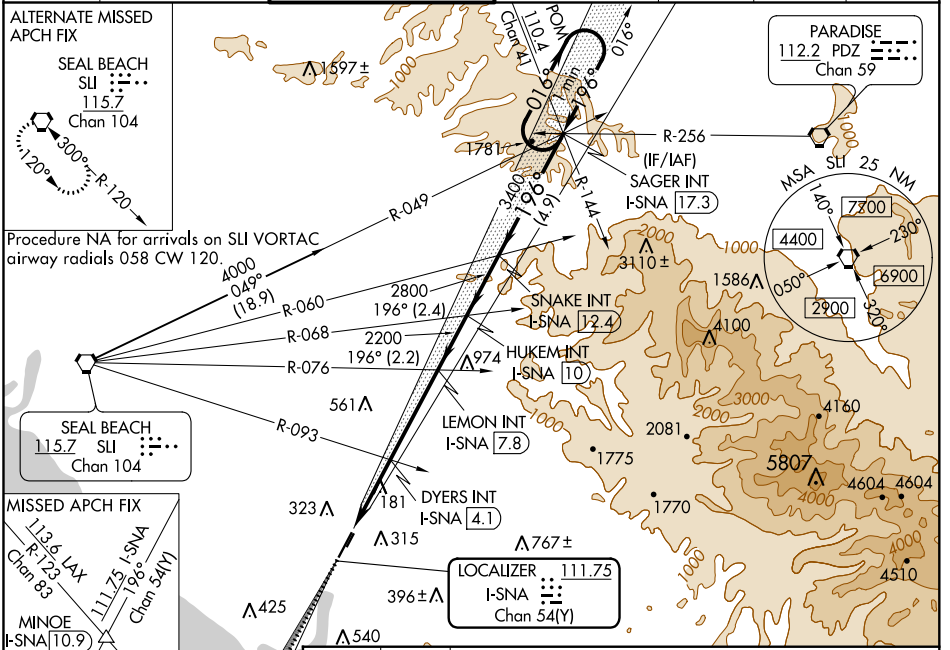


LOC/DME I-SNA 111.75 Chan 54(Y)	APP CRS 196°	Rwy Idg TDZE Apt Elev	5701 55 56
-----------------------------------------------------	------------------------	-----------------------------	---------------------------------------

ILS or LOC RWY 20R

JOHN WAYNE AIRPORT-ORANGE COUNTY (SNA)

<p>⚠ * RVR 1800 authorized with the use of FD or AP or HUD to DA.</p>	<p>MALSR MISSED APPROACH: Climb to 3000 on I-SNA LOC south course (196°) to MINOE INT/I-SNA 10.9 DME.</p>					
	D-ATIS 126.0	SOCAL APP CON 121.3 263.1	JOHN WAYNE TOWER * 126.8 (CTAF) 343.625	GND CON (EAST) (WEST) 120.8 132.25	CLNC DEL 118.0	CPDLC



ELEV 56	TDZE 55	MINOE I-SNA S crs (196°)	VGSI and ILS glidepath not coincident (VGSI Angle 3.00/TCH 63).	SNAKE INT I-SNA 12.4	SAGER INT I-SNA 17.3	One Minute Holding Pattern																														
		<p># LOC only</p> <p>I-SNA 1.1, 2.2</p> <p>DYERS INT I-SNA 4.1</p> <p>LEMONT INT I-SNA 7.8</p> <p>HUKEM INT I-SNA 10</p> <p>SNAKE INT I-SNA 12.4</p> <p>SAGER INT I-SNA 17.3</p>	<p>3000</p> <p>2800</p> <p>2600</p> <p>2400</p> <p>2200</p> <p>2000</p> <p>1800</p> <p>1600</p> <p>1400</p> <p>1200</p> <p>1000</p> <p>800</p> <p>600</p> <p>400</p> <p>200</p> <p>0</p>	<p>016° → 3500</p> <p>← 196°</p> <p>GS 3.00° TCH 51</p>	<p>1.1 NM 1.9 NM 3.7 NM 2.2 NM 2.4 NM 4.9 NM</p>																															
REIL Rwy 20L	MIRL Rwy 2R-20L	HIRL Rwy 2L-20R	DYERS FIX MINIMUMS (DUAL VOR RECEIVERS OR DME REQUIRED)																																	
FAF to MAP 6.6 NM		<table border="1"> <tr> <th>CATEGORY</th> <th>A</th> <th>B</th> <th>C</th> <th>D</th> </tr> <tr> <td>S-ILS 20R*</td> <td colspan="4">255/24 200 (200-½)</td> </tr> <tr> <td>S-LOC 20R</td> <td>1040/40 985 (1000-¾)</td> <td>1040/55 985 (1000-1)</td> <td>1040-2½</td> <td>985 (1000-2½)</td> </tr> <tr> <td>C CIRCLING</td> <td>1040-1¼ 984 (1000-1½)</td> <td>1040-1½ 984 (1000-1½)</td> <td>1040-3 984 (1000-3)</td> <td>1160-3 1104 (1200-3)</td> </tr> <tr> <td>S-LOC 20R</td> <td colspan="2">440/24 385 (400-½)</td> <td colspan="2">440/35 385 (400-¾)</td> </tr> <tr> <td>C CIRCLING</td> <td colspan="2">640-1 584 (600-1)</td> <td colspan="2">840-2¼ 784 (800-2¼)</td> </tr> </table>					CATEGORY	A	B	C	D	S-ILS 20R*	255/24 200 (200-½)				S-LOC 20R	1040/40 985 (1000-¾)	1040/55 985 (1000-1)	1040-2½	985 (1000-2½)	C CIRCLING	1040-1¼ 984 (1000-1½)	1040-1½ 984 (1000-1½)	1040-3 984 (1000-3)	1160-3 1104 (1200-3)	S-LOC 20R	440/24 385 (400-½)		440/35 385 (400-¾)		C CIRCLING	640-1 584 (600-1)		840-2¼ 784 (800-2¼)	
CATEGORY	A	B	C	D																																
S-ILS 20R*	255/24 200 (200-½)																																			
S-LOC 20R	1040/40 985 (1000-¾)	1040/55 985 (1000-1)	1040-2½	985 (1000-2½)																																
C CIRCLING	1040-1¼ 984 (1000-1½)	1040-1½ 984 (1000-1½)	1040-3 984 (1000-3)	1160-3 1104 (1200-3)																																
S-LOC 20R	440/24 385 (400-½)		440/35 385 (400-¾)																																	
C CIRCLING	640-1 584 (600-1)		840-2¼ 784 (800-2¼)																																	
Knots	60	90	120	150	180																															
Min:Sec	6:36	4:24	3:18	2:38	2:12																															

SW-3, 03 DEC 2020 to 31 DEC 2020

SW-3, 03 DEC 2020 to 31 DEC 2020