

ANAHEIM ONE DEPARTURE

TOP ALTITUDE:
2000

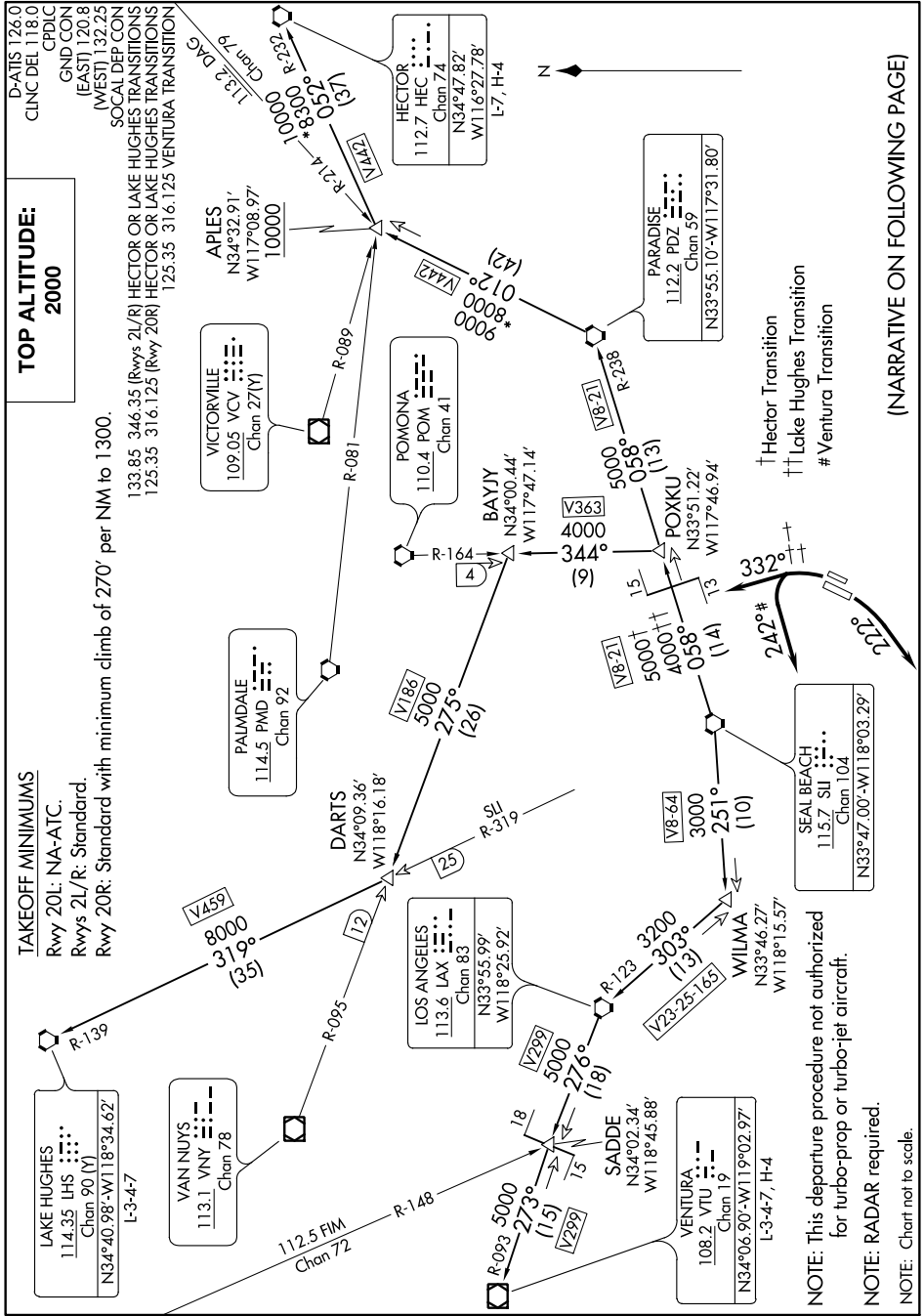
TAKEOFF MINIMUMS

Rwy 20L: NA-ATC.

Rwys 2L/R: Standard.

Rwy 20R: Standard with minimum climb of 270' per NM to 1300.

D-ATIS 126.0
CLNC DEL 118.0
CPDIC
GND CON
(EAST) 120.8
(WEST) 132.25
SOCAL DEP CON
HECTOR OR LAKE HUGHES TRANSITION
125.35 316.125 VENTURA TRANSITION
133.85 346.35 (Rwys 2L/R) HECTOR OR LAKE HUGHES TRANSITION
125.35 316.125 (Rwy 20R) HECTOR OR LAKE HUGHES TRANSITION



NOTE: This departure procedure not authorized for turbo-prop or turbo-jet aircraft.
NOTE: RADAR required.
NOTE: Chart not to scale.

(NARRATIVE ON FOLLOWING PAGE)

SW-3, 03 DEC 2020 to 31 DEC 2020

SW-3, 03 DEC 2020 to 31 DEC 2020

ANAHEIM ONE DEPARTURE