

HI-TACAN RWY 10

TACAN Chan 86Y	APCH CRS 097°	Rwy ldg 8071' TDZE 14 Arprt Elev 15
--------------------------	-------------------------	--

JAL-290 [USN]

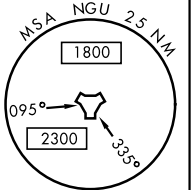
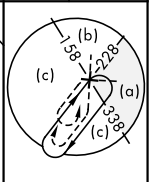
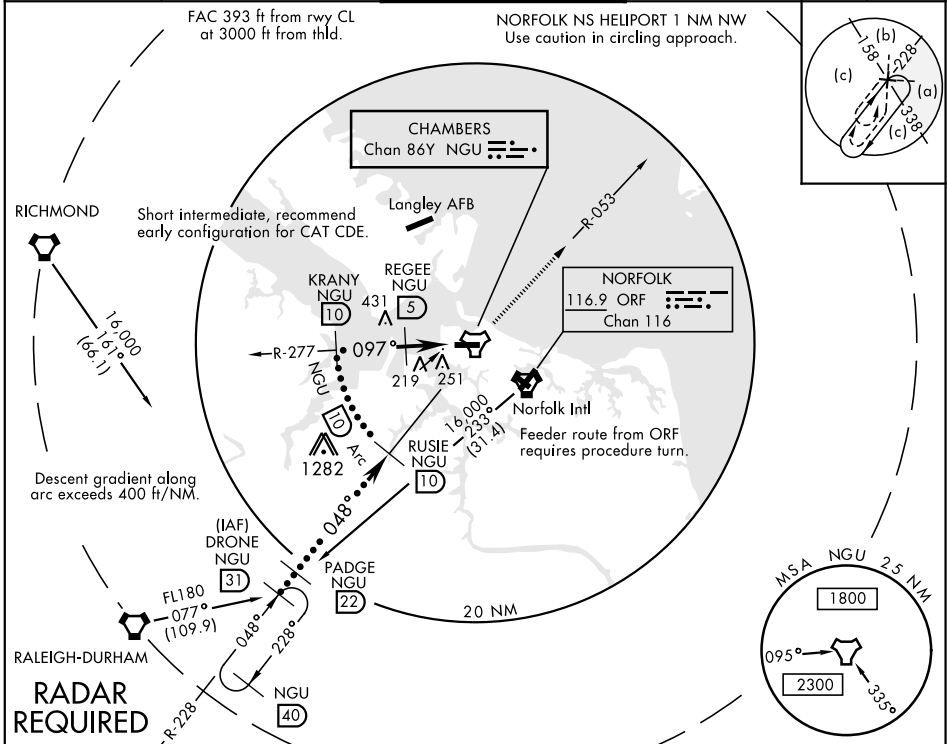
NORFOLK NS (CHAMBERS FIELD) (KNGU)

▼ * When ALS inop, increase CAT CDE vis to 1 1/2 miles.
 ** Circling not authorized S of Rwy 10-28.

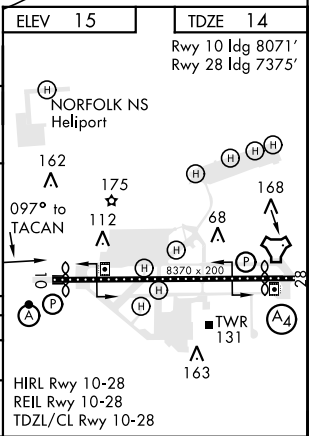
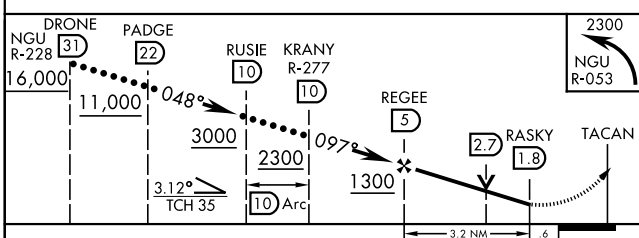
 ALSF-2

 MISSED APPROACH: Climbing left turn to 2300 on NGU TACAN R-053 then as directed by ATC.

ATIS 118.425 342.0	NORFOLK APP CON 118.9 353.7	CHAMBERS TOWER 124.3 379.15	GND CON 121.8 370.85	ASR/PAR
------------------------------	---------------------------------------	---------------------------------------	--------------------------------	---------



EMERG SAFE ALT 100 NM 4100	ELEV 15	TDZE 14
----------------------------	---------	---------



CATEGORY	C	D	E
S-10 *	520-1	506 (600-1)	
CIRCLING **	560-1 1/2 545 (600-1 1/2)	580-2 565 (600-2)	700-2 1/2 685 (700-2 1/2)

NE-3, 03 DEC 2020 to 31 DEC 2020

NE-3, 03 DEC 2020 to 31 DEC 2020