

APP CRS	Rwy Idg	3400
139°	TDZE	1228
	Apt Elev	1228

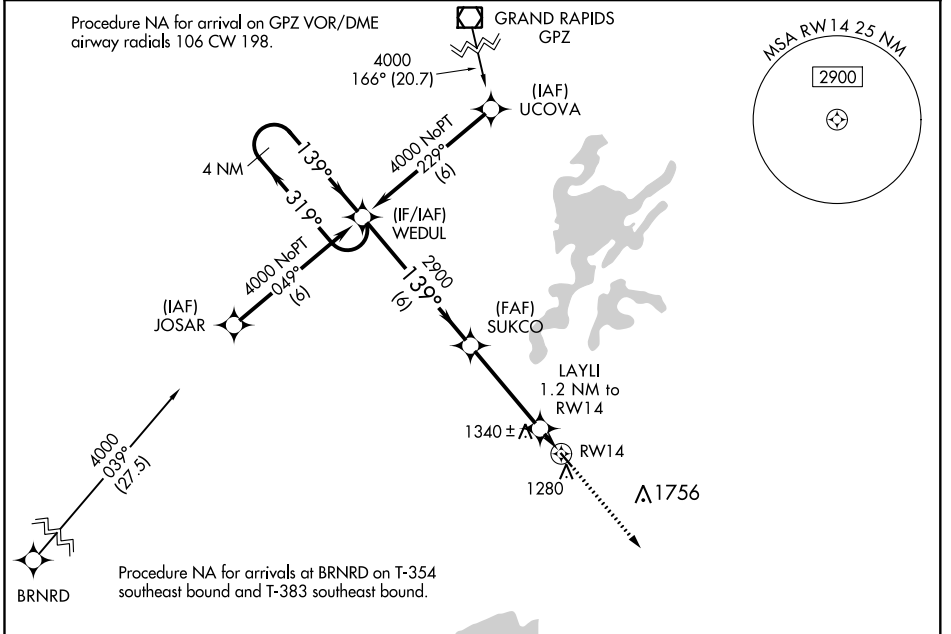
RNAV (GPS) RWY 14

ISEDOR IVERSON (HZX)

▼ DME/DME RNP-0.3 NA. When local altimeter setting not received, use Aikin altimeter setting and increase all MDA 40 feet.

MISSED APPROACH: Climb to 4000 direct ZUDED and hold.

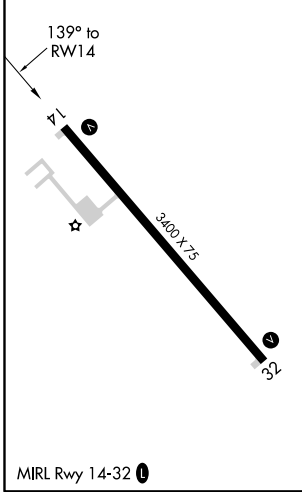
AWOS-3 119.575	MINNEAPOLIS CENTER 127.9 281.45	CTAF 122.9 0
--------------------------	---	------------------------



NC-1, 05 NOV 2020 to 03 DEC 2020

NC-1, 05 NOV 2020 to 03 DEC 2020

ELEV 1228	TDZE 1228
-----------	-----------



ZUDED 4000

4000

2900

1680

3.31° TCH 40

CATEGORY	A	B	C	D
LNAV MDA	1600-1	372 (400-1)	NA	
C CIRCLING	1660-1 432 (500-1)	1700-1 472 (500-1)	NA	