

WAAS CH 90515 W07A	APP CRS 068°	Rwy Idg TDZE 1532 Apt Elev 1538	3500
--	------------------------	---	-------------

RNAV (GPS) RWY 7

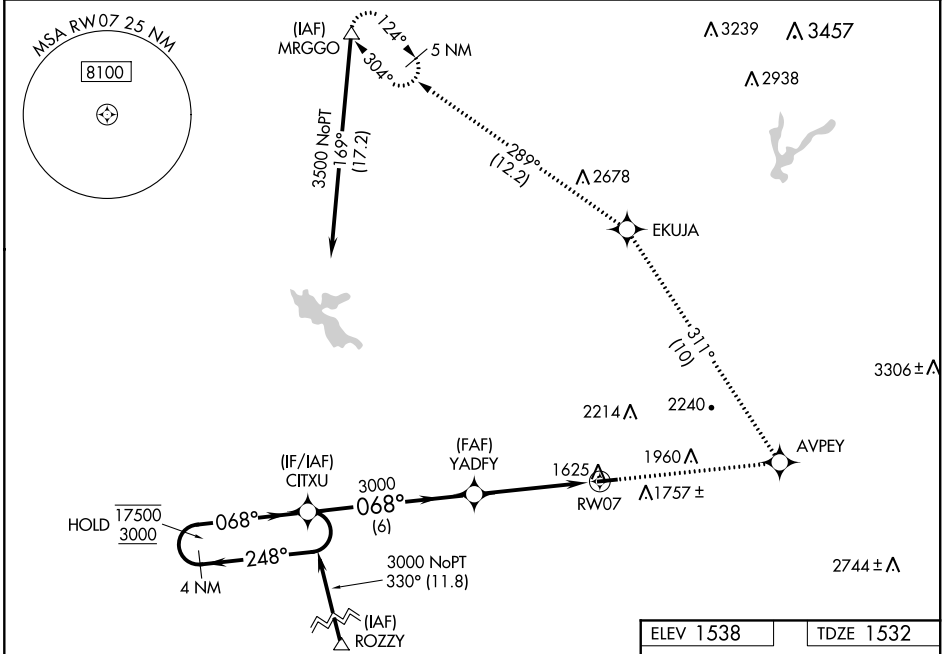
AUBURN MUNI (AUN)

RNP APCH.

⚠ Circling Rwy 25 NA at night. Rwy 7 helicopter visibility reduction below 3/4 SM NA. For uncompensated Baro-VNAV systems, LNAV/VNAV NA below -18°C or above 54°C.

MISSED APPROACH: Climb to 5000 direct AVPEY and left turn on track 311° to EKUJA and on track 289° to MRGGO and hold.

AWOS-3 119.375	NORCAL APP CON 125.4 317.5	UNICOM 122.7 (CTAF) 0
--------------------------	--------------------------------------	---------------------------------



VGSi and RNAV glidepath not coincident (VGSi Angle 3.00/TCH 21).		5000	AVPEY	EKUJA	MRGGO
4 NM Holding Pattern		↑	↙ tr 311°	↘ tr 289°	△
CITXU		*LNAV only			
YADFY		3000			
17500/3000 ← 248°		*1.8 NM to RWY 7			
3000 ← 068°		RWY 7			
GP 3.00°		068° to RWY 7			
TCH 45		3700 X 75			
6 NM		0.2% UP			
2.7 NM		25			
1.8 NM		MIRL Rwy 7-25 0			

SW-2, 05 NOV 2020 to 03 DEC 2020

SW-2, 05 NOV 2020 to 03 DEC 2020