

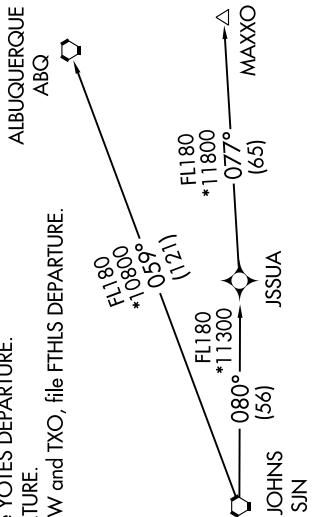
SW-4, 05 NOV 2020 to 03 DEC 2020

ATIS 119.425  
GND CON 118.0  
GLENDALE TOWER \* 121.0  
LUKE DEP CON \* 118.15 363.125  
PHOENIX DEP CON 120.7 239.0

NOTE: RNAV 1.  
NOTE: Turbojets and turboprops only.  
NOTE: RADAR required.  
NOTE: GPS required.  
NOTE: SJN TRANSITION for ABQ terminal arrivals only.  
NOTE: MAXXO TRANSITION ATC assigned only.  
NOTE: Aircraft filing over DEN, RSK, ALS, and points north of ALS, file YOTES DEPARTURE.  
NOTE: Aircraft filing over ABQ, CIM, FTI, and GCK, file LALUZ DEPARTURE.  
NOTE: Aircraft filing over ACH, IBL, ONM, CNX, PNH, MMB, TCC, IRW, and TXO, file FTHLS DEPARTURE.  
NOTE: Aircraft departing KGEU and KGYR ATC assigned only.

TAKEOFF MINIMUMS  
Rwys 1, 19: Standard.

TOP ALTITUDE:  
ASSIGNED BY ATC



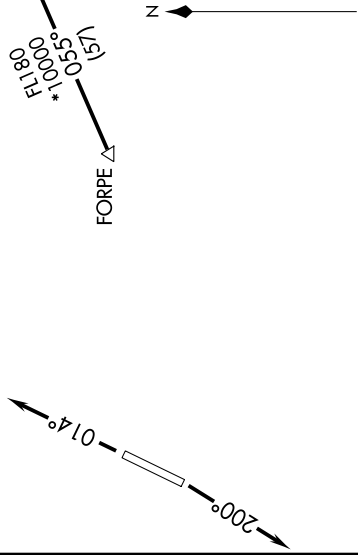
DEPARTURE ROUTE DESCRIPTION

▼ TAKEOFF RUNWAY 1: Climb heading 014° or as assigned by ATC, thence . . . .

TAKEOFF RUNWAY 19: Climb heading 200° or as assigned by ATC, thence . . . .

. . . . expect RADAR vectors to FORPE, then on track 055° to LALUZ, then on (transition). Maintain ATC assigned altitude, expect filed altitude 3 minutes after departure.

ALBUQUERQUE TRANSITION (LALUZ6.ABQ)  
MAXXO TRANSITION (LALUZ6.MAXXO)  
ST JOHNS TRANSITION (LALUZ6.SJN)



NOTE: Chart not to scale.

SW-4, 05 NOV 2020 to 03 DEC 2020