

ATIS
119.425
GND CON
118.0
GLENDALE TOWER ★
121.0
LUKE DEP CON ★
118.15 363.125
PHOENIX DEP CON
120.7 239.0



TAKEOFF OBSTACLE NOTES

Rwy 1: Light on blast fence 4' from DER, 130' left of centerline, up to 10' AGL/1088' MSL.
 Trees beginning 124' from DER, left and right of centerline, up to 30' AGL/1104' MSL.
 Vehicles beginning 299' from DER, 80' right of centerline, up to 15' AGL/1091' MSL.
 Poles and trees beginning 400' from DER, 197' right of centerline, up to 75' AGL/1144' MSL.

Rwy 19: Trees beginning 281' from DER, 331' left of centerline, up to 33' AGL/1060' MSL.

TAKEOFF MINIMUMS

Rwys 1, 19: Standard with minimum climb of 500' per NM to 1580.

NOTE: RNAV 1.

NOTE: GPS required.

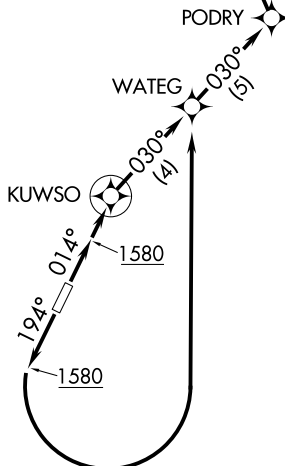
NOTE: Chart not to scale.

DEPARTURE ROUTE DESCRIPTION

TAKEOFF RUNWAY 1: Climb heading 014° to 1580, then direct KUWSO, then as depicted to cross KARLO at/above 10000. . . .

TAKEOFF RUNWAY 19: Climb heading 194° to 1580, then left turn direct WATEG, then as depicted to cross KARLO at/above 10000. . . .

. . . .thence on track 350° to DRK VORTAC.
Expect filed altitude 3 minutes after departure.



SW-4, 05 NOV 2020 to 03 DEC 2020

SW-4, 05 NOV 2020 to 03 DEC 2020