

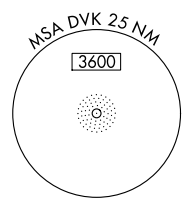
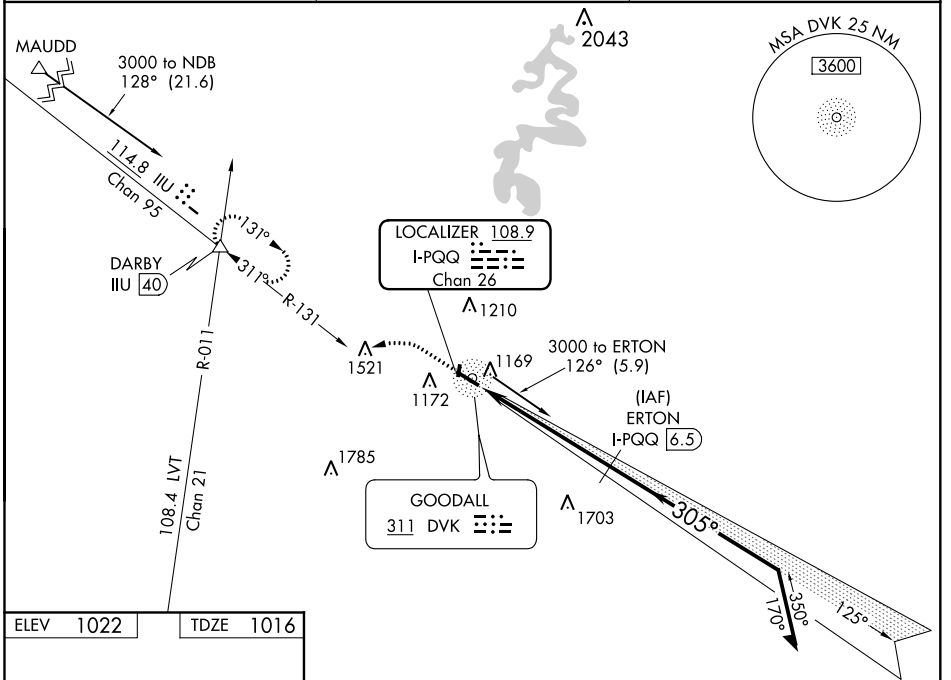
LOC/DME I-PQQ <b>108.9</b> Chan <b>26</b>	APP CRS <b>305°</b>	Rwy Idg TDZE Apt Elev	<b>5000</b> <b>1016</b> <b>1022</b>
---	------------------------	-----------------------------	---

**LOC RWY 30**  
STUART POWELL FIELD (DVK)

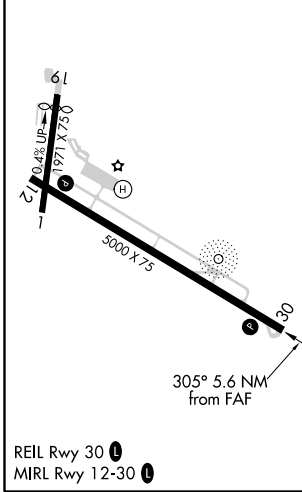
**▽** When local altimeter setting not received, use Lexington altimeter setting and increase all MDA 80 feet; increase S-30 Cat C-D visibility and Circling Cat C-D visibility 1/4 mile.  
**△ NA** Rwy 30 helicopter visibility reduction below 3/4 SM NA. Rwy 1, 19 helicopter visibility reduction below 1 SM NA. DME required. Circling Rwy 1, 19 NA at night.

**MISSED APPROACH:** Climb to 2000 then climbing left turn to 3000 on heading 260° and IIL R-131 to DARBY INT and hold.

AWOS-3 <b>128.325</b>	LEXINGTON APP CON <b>120.15 259.3</b>	UNICOM <b>122.8 (CTAF)</b>
--------------------------	--	-------------------------------



ELEV 1022	TDZE 1016
-----------	-----------



**DME REQUIRED**

2000	3000	IIL R-131	DARBY	ERTON I-PQQ 6.5	Remain within 10 NM
hdg 260°					
I-PQQ 0.9	I-PQQ 2.1				
1.3 NM	4.4 NM				
VGS1 and descent angles not coincident (VGS1 Angle 3.00/TCH 29).					
CATEGORY	A	B	C	D	
S-30	1440-1	424 (500-1)	1440-1 1/4	424 (500-1 1/4)	
CIRCLING	1480-1	1560-1	1560-1 1/2	1720-2 1/4	
	458 (500-1)	538 (600-1)	538 (600-1 1/2)	698 (700-2 1/4)	

SE-1, 05 NOV 2020 to 03 DEC 2020

SE-1, 05 NOV 2020 to 03 DEC 2020