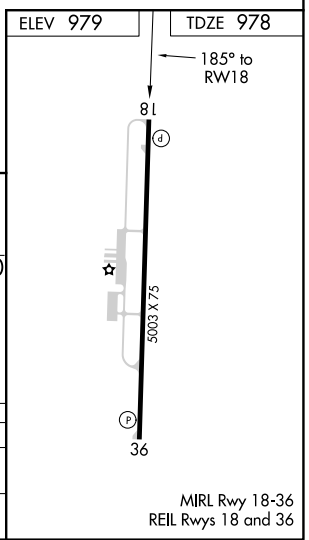
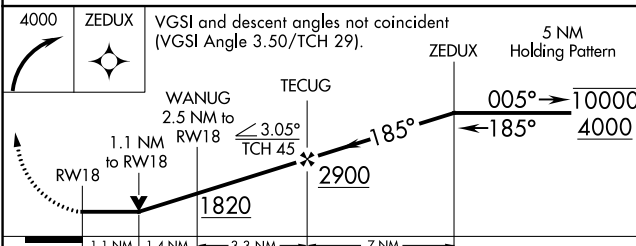
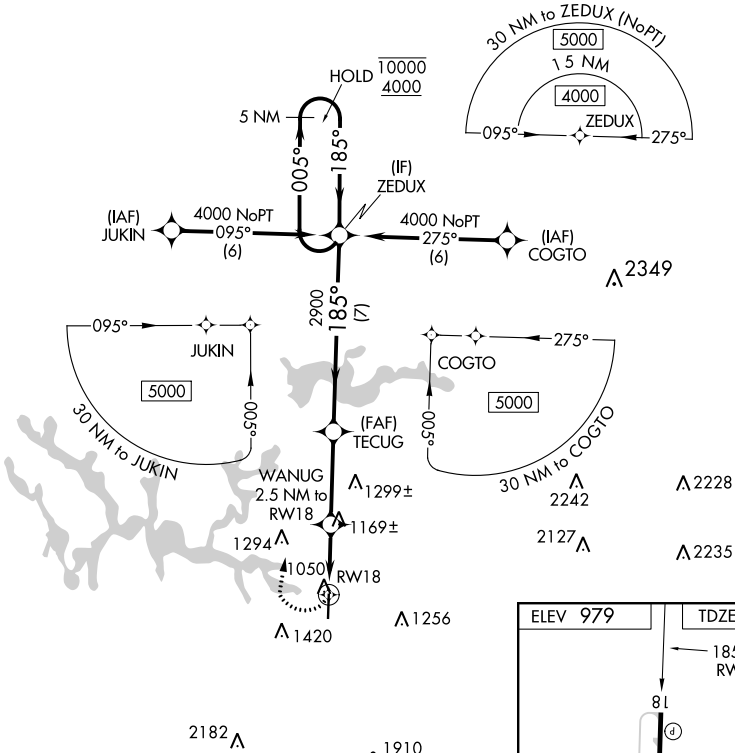


| | | |
|-------------|----------|-------------|
| APP CRS | Rwy Idg | 5003 |
| 185° | TDZE | 978 |
| | Apt Elev | 979 |

RNAV (GPS) Y RWY 18

WINCHESTER MUNI (BGF)

| | | | |
|---|--|---|---|
| RNP APCH. | | MISSED APPROACH: Climbing right turn to 4000 direct ZEDUX and hold. | |
| Rwy 18 helicopter visibility reduction below 3/4 SM NA. | | AWOS-3 121.675 | MEMPHIS CENTER 128.15 323.125 |
| | | GCO 121.725 | UNICOM 122.8 (CTAF) |



| CATEGORY | A | B | C | D |
|----------|--------|-------------|-------------------------|-------------------------|
| LNVA MDA | 1420-1 | 442 (500-1) | 1420-1¼ 442 (500-1¼) | 1420-1½ 442 (500-1½) |
| CIRCLING | 1460-1 | 481 (500-1) | 1540-1½ 561 (600-1½) | 1780-2½ 801 (900-2½) |

SE-1, 05 NOV 2020 to 03 DEC 2020

SE-1, 05 NOV 2020 to 03 DEC 2020

MIRL Rwy 18-36
REIL Rwy 18 and 36