

LOC/DME I-PMP 109.75 Chan 34(Y)	APP CRS 150°	Rwy ldg 4418 TDZE 17 Apt Elev 19
---	------------------------	---

LOC RWY 15

POMPANO BEACH AIRPARK (PMP)

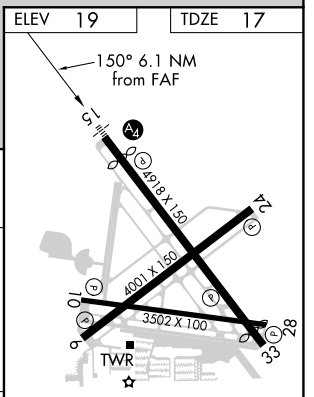
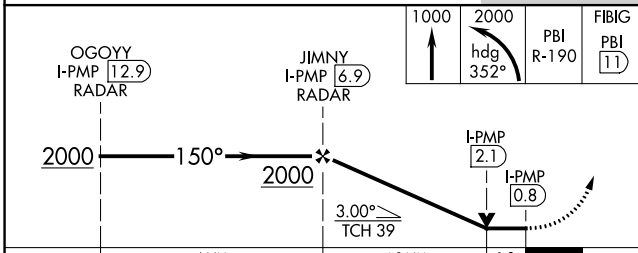
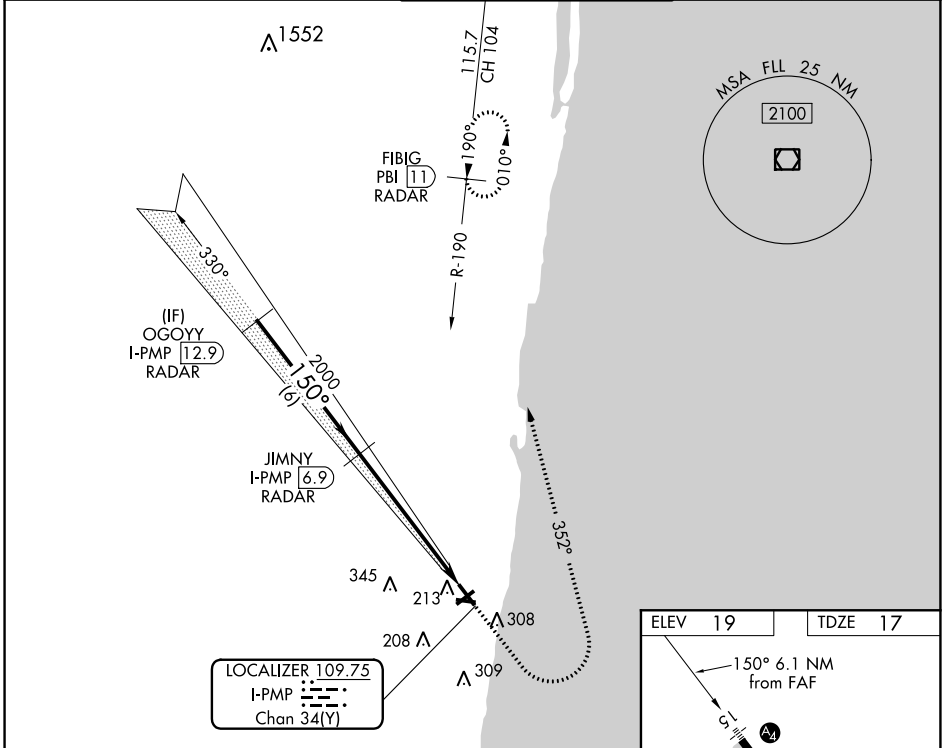
DME required. RADAR required for procedure entry.

▽ Rwy 15 helicopter visibility reduction below 1 SM NA.
▲ Inop table does not apply. Straight-in Rwy 15 NA at night, Circling Rwy 15 NA at night.

MALS

MISSED APPROACH: Climb to 1000 then climbing left turn to 2000 on heading 352° and PBI VORTAC R-190 to FIBIG/PBI 11 DME/RADAR and hold.

ATIS 120.55	MIAMI APP CON 119.7 306.3	POMPANO BEACH TOWER ★ 125.4 (CTAF) 0	GND CON 121.9	UNICOM 122.95
-----------------------	-------------------------------------	--	-------------------------	-------------------------



CATEGORY	A	B	C	D
S-LOC 15	480-1	463 (500-1)		NA
C CIRCLING	660-1	641 (700-1)		NA

MIRL all Rwys
REIL Rwy 6, 10, 24 and 28

SE-3, 05 NOV 2020 to 03 DEC 2020

SE-3, 05 NOV 2020 to 03 DEC 2020