

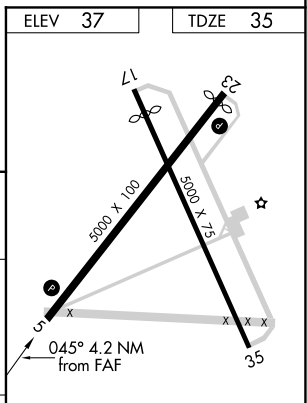
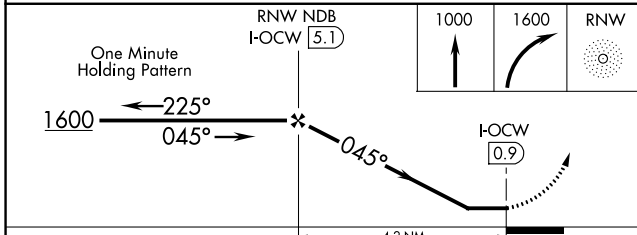
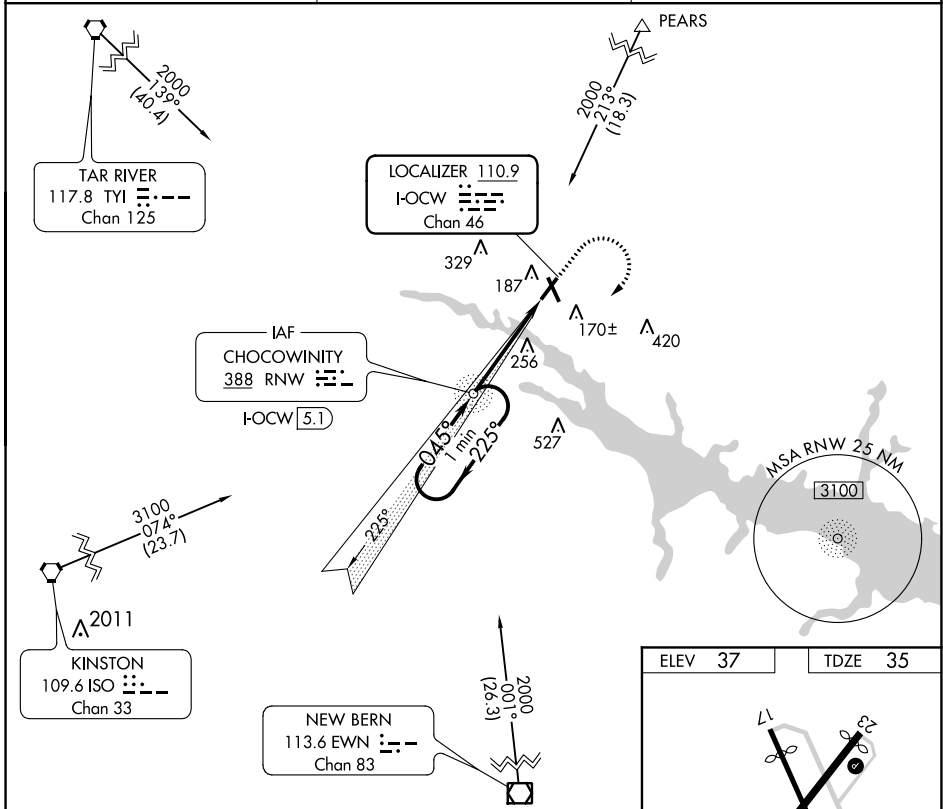
LOC/DME I-OCW 110.9 Chan 46	APP CRS 045°	Rwy Idg TDZE Apt Elev 5000 35 37
---	------------------------	--

LOC RWY 5
WASHINGTON-WARREN (OCW)

ADF Required. Night Landing: Rwy 17 NA. Helicopter visibility reduction below 3/4 SM NA.

MISSED APPROACH: Climb to 1000, then climbing right turn to 1600 direct RNW NDB and hold.

AWOS-3 120.175	CHERRY POINT APP CON 119.35 377.175	UNICOM 122.7 (CTAF) 1
--------------------------	---	--



CATEGORY	A	B	C	D
S-5	480-1 445 (500-1)		480-1 3/8 445 (500-1 3/8)	
CIRCLING	540-1 503 (600-1)		540-1 1/2 503 (600-1 1/2)	620-2 583 (600-2)

REIL Rwy 5 and 23 1
MIRL Rwys 5-23 1
FAF to MAP 4.2 NM
Knots 60 90 120 150 180
Min:Sec 4:12 2:48 2:06 1:41 1:24

SE-2, 05 NOV 2020 to 03 DEC 2020

SE-2, 05 NOV 2020 to 03 DEC 2020