

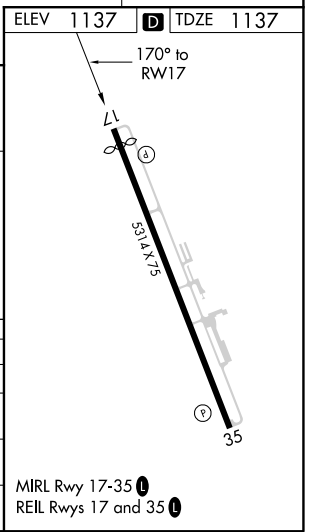
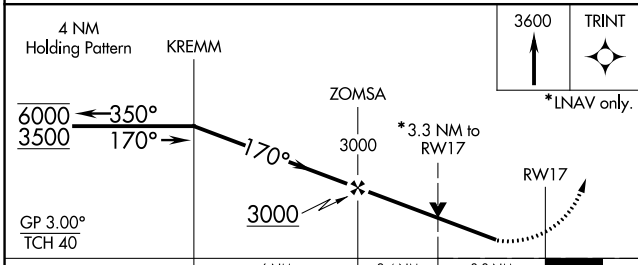
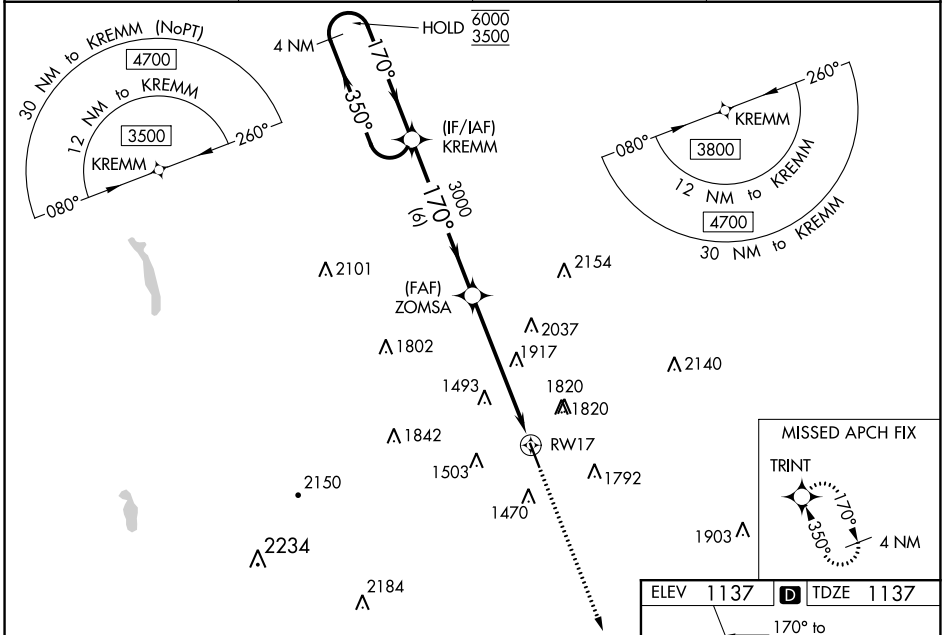
WAAS CH 65818 W17A	APP CRS 170°	Rwy Idg TDZE 1137 Apt Elev 1137
---------------------------------	------------------------	---

RNAV (GPS) RWY 17

HAMILTON MUNI (VGC)

RNP APCH.	<p>▼ Baro-VNAV and VDP NA when using Syracuse altimeter setting. Rwy 17 helicopter visibility reduction below $\frac{3}{4}$ SM NA. For uncompensated Baro-VNAV systems, LNAV/VNAV NA below -17°C or above 54°C. When local altimeter setting not received, use Syracuse altimeter setting and increase LPV DA to 1614, LNAV/VNAV DA to 2579 and all MDA 180 feet; and increase LPV visibility to $\frac{3}{8}$ SM and LNAV/VNAV visibility to 6 SM.</p>	MISSED APPROACH: Climb to 3600 direct TRINT and hold.
-----------	---	--

AWOS-3P 119.425	SYRACUSE APP CON 126.125 269.125	UNICOM 123.0 (CTAF)	122.7 0
---------------------------	--	-------------------------------	----------------



CATEGORY	A	B	C	D
LPV DA	1447- $\frac{7}{8}$	310 (400- $\frac{7}{8}$)		NA
LNAV/VNAV DA	2412-5	1275 (1300-5)		NA
LNAV MDA	2220-1 $\frac{1}{4}$ 1083 (1100-1 $\frac{1}{4}$)	2220-1 $\frac{1}{2}$ 1083 (1100-1 $\frac{1}{2}$)	2220-3 1083 (1100-3)	NA
C CIRCLING	2220-1 $\frac{1}{4}$ 1083 (1100-1 $\frac{1}{4}$)	2220-1 $\frac{1}{2}$ 1083 (1100-1 $\frac{1}{2}$)	2340-3 1203 (1300-3)	NA

MIRL Rwy 17-35 0
REIL Rwy 17 and 35 0

NE-2, 05 NOV 2020 to 03 DEC 2020

NE-2, 05 NOV 2020 to 03 DEC 2020