

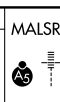
WAAS CH <b>50314</b> <b>W07A</b>	APP CRS <b>066°</b>	Rwy Idg <b>5499</b> TDZE <b>742</b> Apt Elev <b>742</b>
--	------------------------	---

# RNAV (GPS) RWY 7L

KENOSHA RGNL (E,N,W)

RNP APCH.

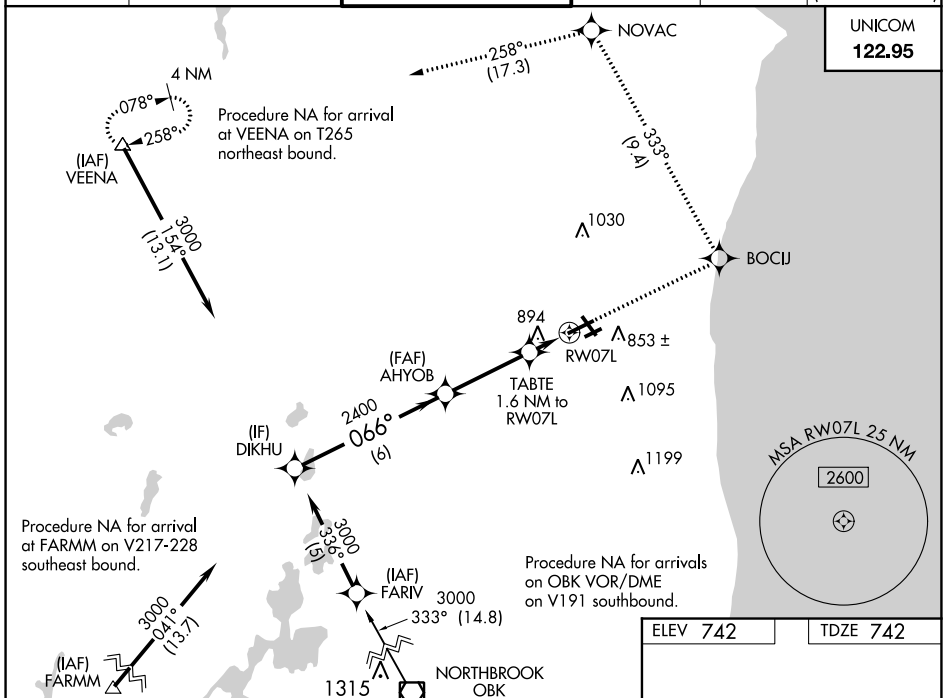
**▼** Circling Rwy 7R, 15 NA at night. For uncompensated Baro-VNAV systems, LNAV/VNAV NA below -1.6°C or above 47°C. For inop ALS, increase LNAV Cat C/D visibility to 1 ¼ SM.



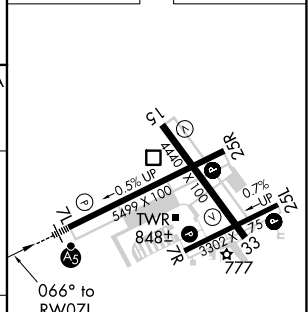
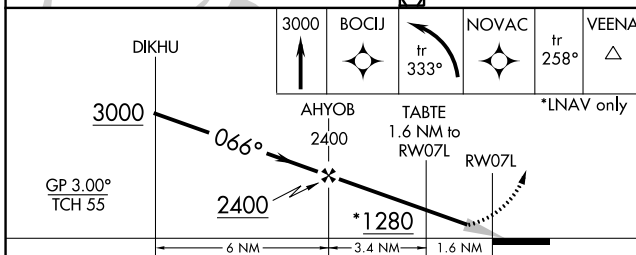
MISSED APPROACH:  
Climb to 3000 direct BOCIJ and left turn on track 333° to NOVAC and on track 258° to VEENA and hold.

ATIS <b>127.175</b>	MILWAUKEE APP CON <b>135.875 317.725</b>	KENOSHA TOWER ★ <b>118.6 (CTAF) 0 353.6</b>	GND CON <b>121.875</b>	CLNC DEL <b>121.875</b>	CLNC DEL <b>118.6</b> (When twr closed)
------------------------	---	--	---------------------------	----------------------------	---

UNICOM  
**122.95**



ELEV 742	TDZE 742
----------	----------



CATEGORY	A	B	C	D
LPV DA	942-½ 200 (200-½)			
LNAV/VNAV DA	1179-1 437 (500-1)			
LNAV MDA	1160-½ 418 (500-½)	1160-¾ 418 (500-¾)		1160-1 418 (500-1)
CIRCLING	1200-1 458 (500-1)	1200-1½ 458 (500-½)		1340-2 598 (600-2)

MIRL Rwy 7R-25L **0**

HIRL Rwy 7L-25R and 15-33 **0**

EC-3, 05 NOV 2020 to 03 DEC 2020

EC-3, 05 NOV 2020 to 03 DEC 2020