

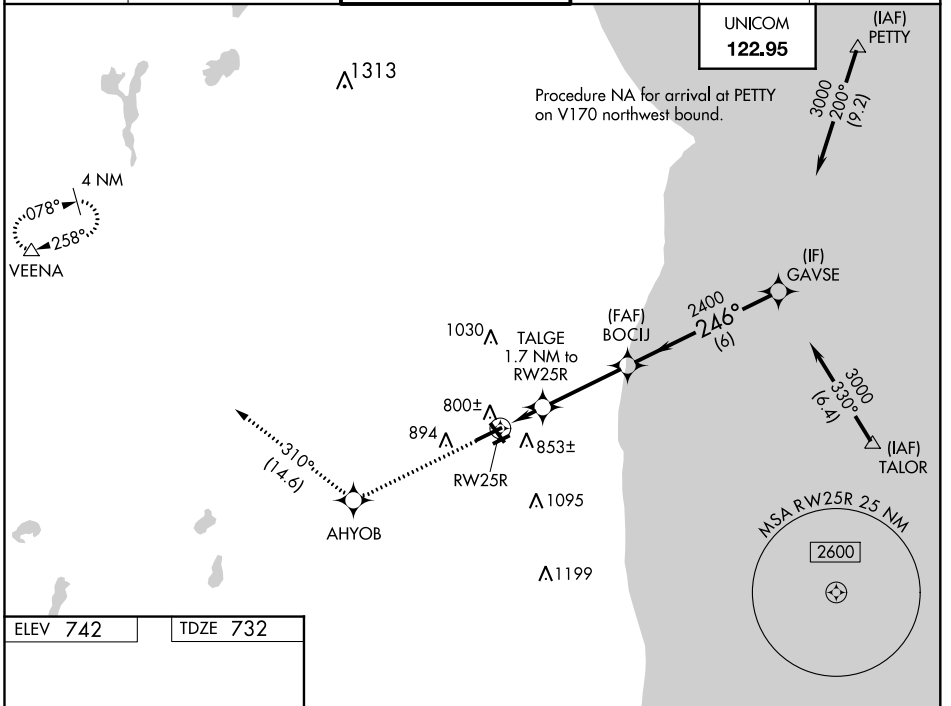
WAAS CH <b>49014</b> <b>W25A</b>	APP CRS <b>246°</b>	Rwy Idg TDZE <b>732</b> Apt Elev <b>742</b>	<b>5499</b>
--	------------------------	---	-------------

# RNAV (GPS) RWY 25R

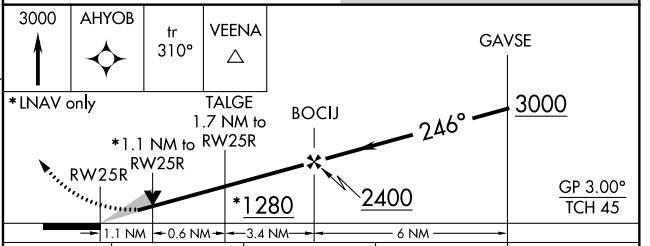
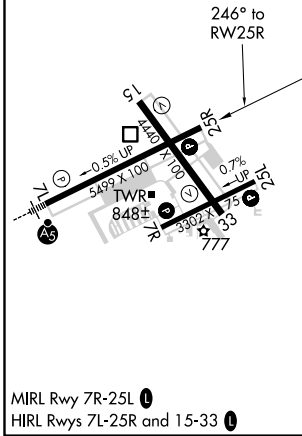
KENOSHA RGNL (ENW)

RNP APCH.	MISSED APPROACH: Climb to 3000 direct AHYOB and on track 310° to VEENA and hold.
<p>▼ Circling Rwy 7R, 15 NA at night. For uncompensated Baro-VNAV systems, LNAV/VNAV NA below -16°C or above 47°C.</p>	

ATIS <b>127.175</b>	MILWAUKEE APP CON <b>135.875 317.725</b>	KENOSHA TOWER ★ <b>118.6 (CTAF) 0 353.6</b>	GND CON <b>121.875</b>	CLNC DEL <b>121.875</b>	CLNC DEL <b>118.6</b> (When twr closed)
------------------------	---	--	---------------------------	----------------------------	---



ELEV <b>742</b>	TDZE <b>732</b>
-----------------	-----------------



CATEGORY	A	B	C	D
LPV DA	982-1 250 (300-1)			
LNAV/VNAV DA	1064-1¼ 332 (400-1¼)			
LNAV MDA	1140-1 408 (400-1)	1140-1½ 408 (400-1½)	1140-1¼ 408 (400-1¼)	
CIRCLING	1200-1 458 (500-1)	1200-1½ 458 (500-1½)	1340-2 598 (600-2)	

EC-3, 05 NOV 2020 to 03 DEC 2020

EC-3, 05 NOV 2020 to 03 DEC 2020