

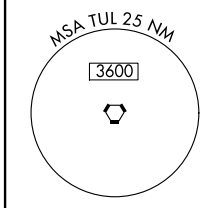
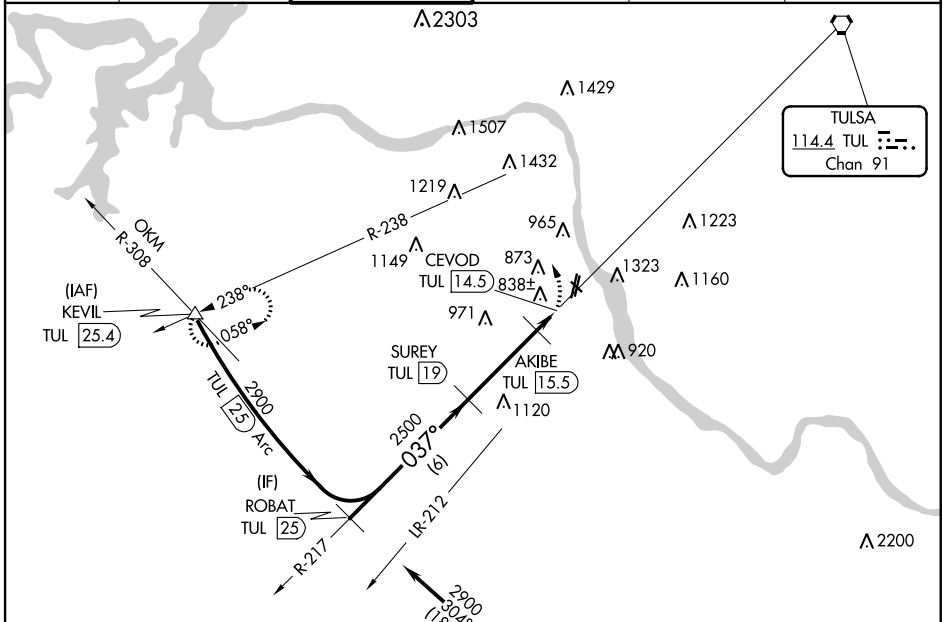
VORTAC TUL <b>114.4</b> Chan <b>91</b>	APP CRS <b>037°</b>	Rwy Idg TDZE Apt Elev <b>N/A</b> <b>N/A</b> <b>638</b>
----------------------------------------------	------------------------	-----------------------------------------------------------------------

**VOR/DME-A**  
RICHARD LLOYD JONES JR (RVS)

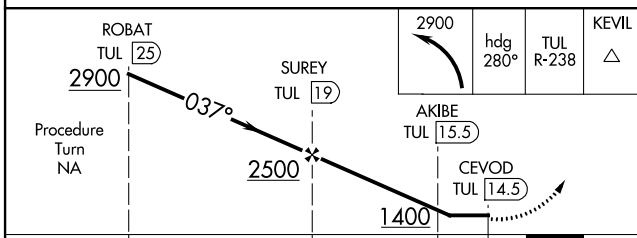
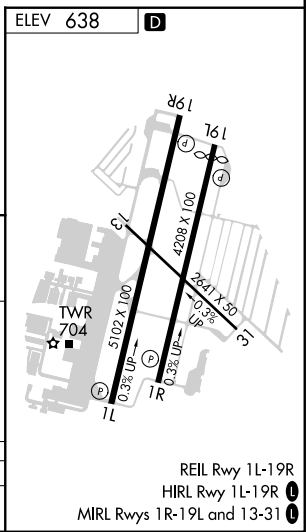
When local altimeter setting not received, use Tulsa Int altimeter setting and increase MDA 40 feet; increase Cat C/D visibilities ¼ mile.

MISSED APPROACH: Climbing left turn to 2900 via heading 280° and TUL R-238 to KEVIL Int/TUL 25.4 DME and hold.

ATIS <b>126.5</b>	TULSA APP CON <b>134.7</b>	RIVERSIDE TOWER* <b>120.3</b> (CTAF) <b>0</b>	GND CON <b>121.7</b>	CLNC DEL <b>124.5</b>	UNICOM <b>122.95</b>
----------------------	-------------------------------	--------------------------------------------------	-------------------------	--------------------------	-------------------------



IAF OKMULGEE  
114.9 OKM  
Chan 96



CATEGORY	A	B	C	D
<b>CIRCLING</b>	1260-1 622 (700-1)	1280-1 642 (700-1)	1280-1 3/4 642 (700-1 3/4)	1380-2 1/2 742 (800-2 1/2)

SC-1, 05 NOV 2020 to 03 DEC 2020

SC-1, 05 NOV 2020 to 03 DEC 2020

REIL Rwy 1L-19R  
HIRL Rwy 1L-19R **0**  
MIRL Rws 1R-19L and 13-31 **0**