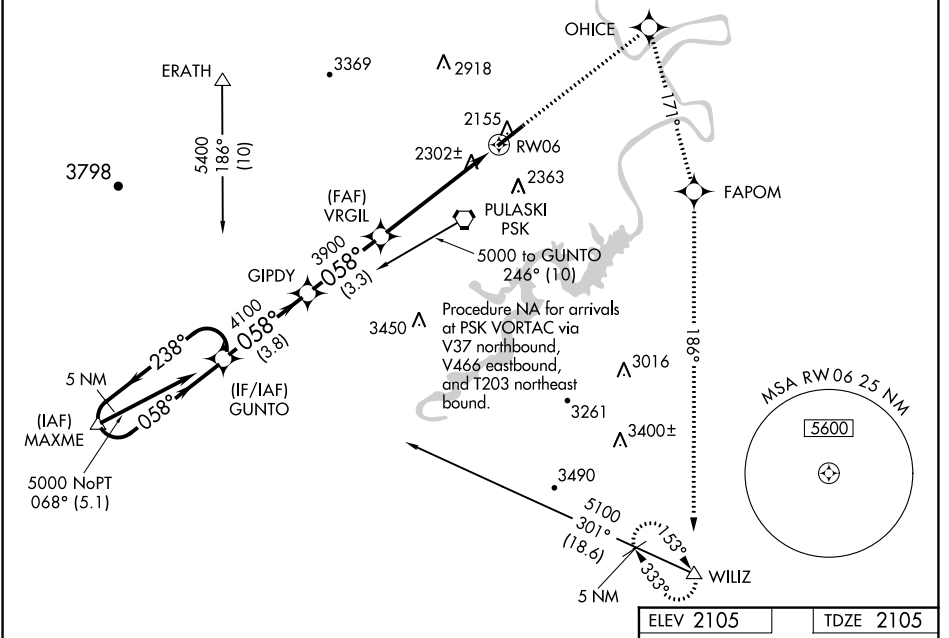


WAAS CH <b>87015</b> <b>W06A</b>	APP CRS <b>058°</b>	Rwy Idg TDZE Apt Elev	<b>6201</b> <b>2105</b> <b>2105</b>
--	------------------------	-----------------------------	---

# RNAV (GPS) RWY 6

NEW RIVER VALLEY (PSK)

RNP APCH.		MALSR AS	MISSED APPROACH: Climb to 6000 direct OHICE and right turn via track 171° to FAPOM and via track 186° to WILIZ and hold.
<p>⚠ For uncompensated Baro-VNAV systems, LNAV/VNAV NA below -19°C or above 44°C. When local altimeter setting not received, use Blacksburg altimeter setting and increase all DA 36 feet, and all MDA 40 feet. VDP and Baro-VNAV NA when using Blacksburg altimeter setting. Inop table does not apply to LPV all Cats and LNAV Cats A and B. For inop MALSR, increase LNAV Cat C visibility to 1¼ SM.</p>			
AWOS-3 <b>127.375</b>	ROANOKE APP CON <b>126.0 339.8</b>	ROANOKE CLNC DEL <b>121.7</b>	UNICOM <b>122.7 (CTAF)</b>



NE-3, 05 NOV 2020 to 03 DEC 2020

NE-3, 05 NOV 2020 to 03 DEC 2020

5 NM Holding Pattern		ELEV 2105		TDZE 2105	
<p>5000 ← 238° / 058° → 058°</p> <p>GP 3.00° TCH 58</p>		<p>OHICE (6000)</p> <p>FAPOM (tr 171°)</p> <p>WILIZ (tr 186°)</p>		<p>2174±</p> <p>2113±</p> <p>2166±</p> <p>2268</p> <p>058° to RW06</p>	
<p>GUNTO (5000) ← 238° / 058° → 058°</p> <p>GIPDY (4100)</p> <p>VRGIL (3900) *1.3 NM to RW06</p> <p>RW06 (2155)</p> <p>Distances: 3.8 NM, 3.3 NM, 4.1 NM, 1.3 NM</p>		<p>VGSI and RNAV glidepath not coincident (VGSI Angle 3.00/TCH 58).</p> <p>* LNAV only.</p>		<p>6201 x 150</p>	
CATEGORY	A	B	C	D	
LPV DA		2305-1	200 (200-1)		
LNAV/ VNAV DA		2597-1¼	492 (500-1¼)		
LNAV MDA		2560-1	455 (500-1)		
CIRCLING	2620-1	515 (600-1)	2620-1½ 515 (600-1½)	2680-2 575 (600-2)	
		HIRL Rwy 6-24		REIL Rwy 24	