

WAAS CH <b>82004</b> <b>W05A</b>	APP CRS <b>050°</b>	Rwy ldg <b>10960</b> TDZE <b>93</b> Apt Elev <b>93</b>
--	------------------------	--

# RNAV (GPS) RWY 5

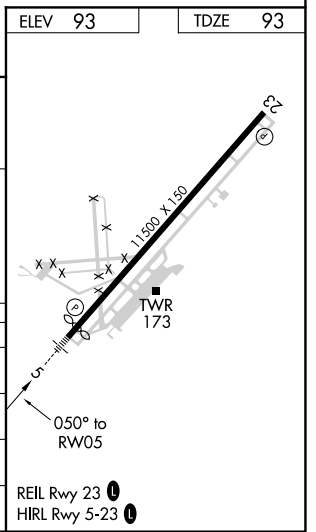
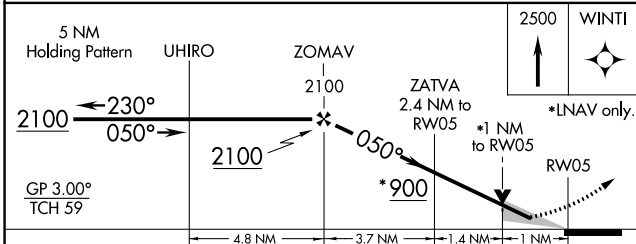
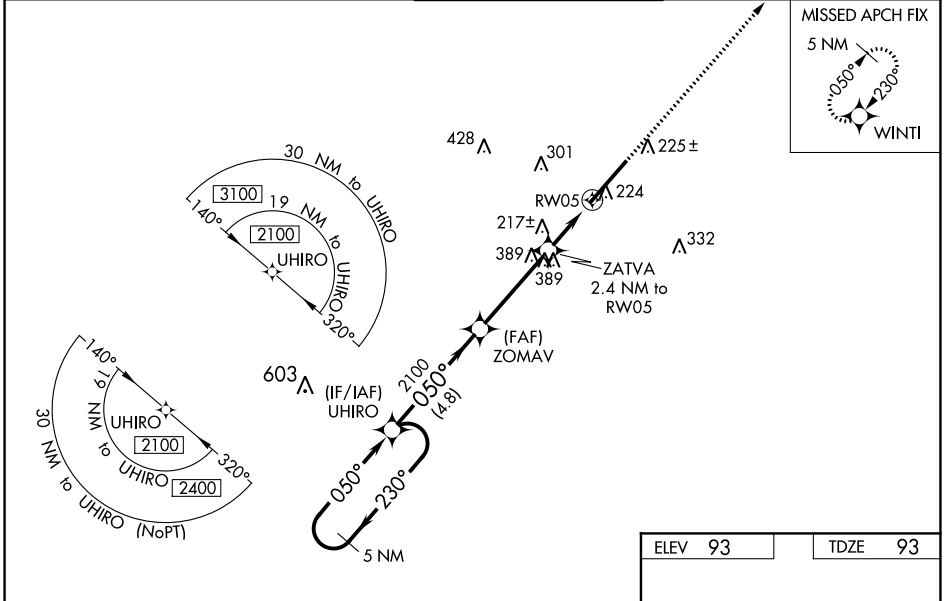
KINSTON RGNL JETPORT AT STALLINGS FIELD (ISO)

**⚠** Baro-VNAV NA when using Seymour Johnson AFB altimeter setting. For uncompensated Baro-VNAV systems, LNAV/VNAV NA below -15°C (5°F) or above 54°C (130°F).  
**⚠** DME/DME RNP-0.3 NA. VDP NA when using Seymour Johnson AFB altimeter setting. When local altimeter setting not received, use Seymour Johnson AFB altimeter setting and increase all DAs 43 feet and all MDAs 60 feet. Increase LNAV/VNAV all Cats visibility to RVR 2600, increase LNAV Cats C and D visibility to RVR 4000, and Circling Cat D visibility to 2¼mile. For inop MALSR, increase LNAV/VNAV all Cats visibility to RVR 4500 and LNAV Cats A and B visibility to RVR 5500 and Cats C and D to RVR 6000. For inop MALSR when using Seymour Johnson AFB altimeter setting, increase LNAV Cats A and B visibility to RVR 5500 and Cats C and D to 1½ mile.

**MALSR**

**MISSED APPROACH:** Climb to 2500 direct WINTI and hold.

AWOS-3 <b>132.75</b>	SEYMOUR JOHNSON APP CON * <b>127.3 273.6</b>	<b>KINSTON TOWER *</b> <b>120.6 (CTAF) 0 335.55</b>	GND CON <b>121.9</b>	UNICOM <b>122.95</b>
-------------------------	---	--	-------------------------	-------------------------



CATEGORY	A	B	C	D
LPV DA		293/24	200 (200-½)	
LNAV/VNAV DA		368/24	275 (300-½)	
LNAV MDA	480/24	387 (400-½)	480/35	387 (400-⅝)
<b>C</b> CIRCLING	580-1	487 (500-1)	700-1¾ 607 (700-1¾)	740-2 647 (700-2)

# RNAV (GPS) RWY 5

SE-2, 05 NOV 2020 to 03 DEC 2020

SE-2, 05 NOV 2020 to 03 DEC 2020