


WAAS CH <b>45505</b> <b>W26A</b>	APP CRS <b>264°</b>	Rwy Idg TDZE Apt Elev	<b>5500</b> <b>671</b> <b>672</b>
--	------------------------	-----------------------------	---

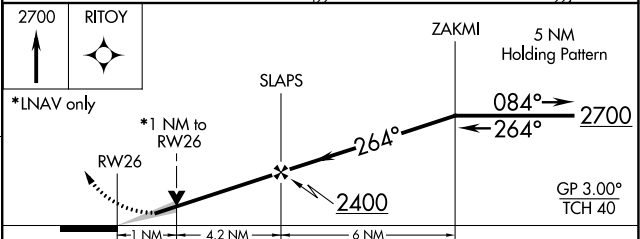
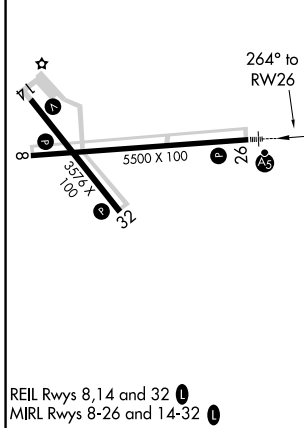
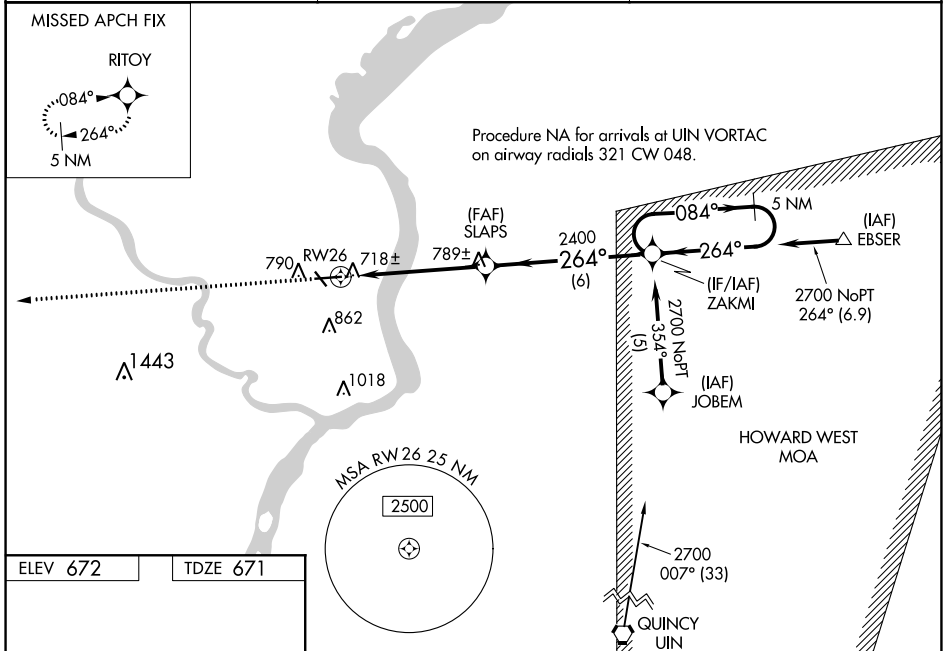
# RNAV (GPS) RWY 26

KEOKUK MUNI (EOK)

**▽** DME/DME RNP -0.3 NA. For uncompensated Baro-VNAV systems, LNAV/VNAV NA below -16°C (4°F) or above 54°C (130°F). When local altimeter setting not received, use Burlington altimeter setting and increase all DA 59 feet and all MDA 60 feet, increase Circling Cat C visibility ¼ mile. For inoperative MALS, increase LNAV/VNAV and LNAV Cat A/B/C visibility to 1 mile. For inoperative MALS when using Burlington altimeter, setting, increase LNAV Cat A/B visibility to 1 mile. VDP and Baro-VNAV NA when using Burlington altimeter setting. Circling to Rwy 32 NA at night.

**MALS**  
  
**MISSED APPROACH:**  
 Climb to 2700 direct RIT0Y and hold.

AWOS-3 <b>118.375</b>	KANSAS CITY CENTER <b>126.225 317.775</b>	UNICOM <b>122.8 (CTAF) ①</b>
--------------------------	--	---------------------------------



CATEGORY	A	B	C	D
LPV DA	925-¾	254 (300-¾)		NA
LNAV/VNAV DA	979-¾	308 (400-¾)		NA
LNAV MDA	1040-¾	369 (400-¾)		NA
CIRCLING	1180-1	508 (600-1)	1220-1½ 548 (600-1½)	NA

KEOKUK, IOWA  
 Orig-B 13DEC12

40°28'N-91°26'W

# KEOKUK MUNI (EOK) RNAV (GPS) RWY 26

NC-3, 05 NOV 2020 to 03 DEC 2020

NC-3, 05 NOV 2020 to 03 DEC 2020