

| | | |
|--|------------------------|---|
| WAAS CH 90104 W14A | APP CRS 140° | Rwy Idg 3576 TDZE 671 Apt Elev 672 |
|--|------------------------|---|

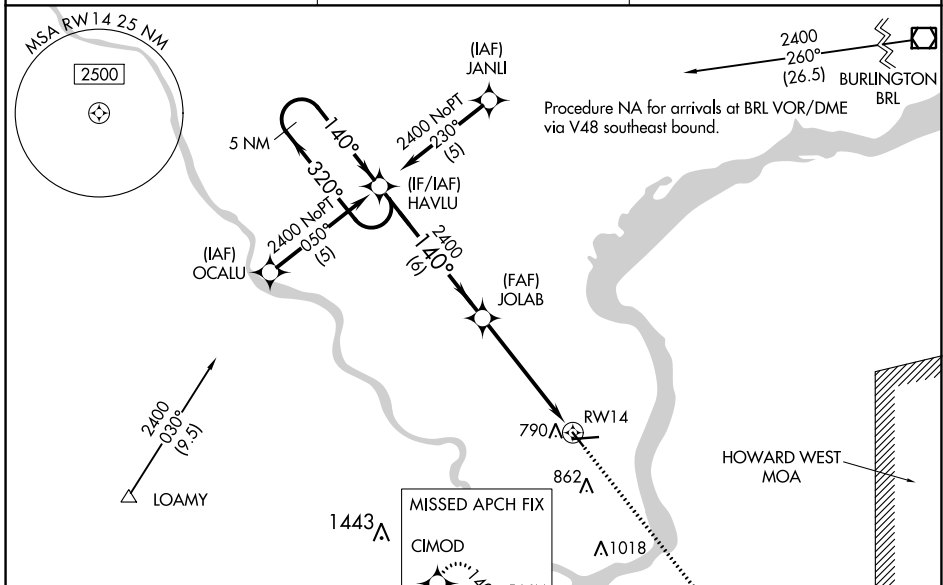
RNAV (GPS) RWY 14

KEOKUK MUNI (EOK)

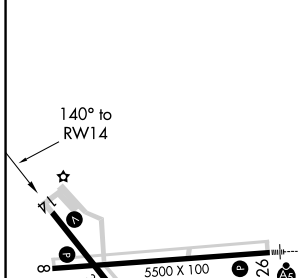
⚠ Baro-VNAV NA when using Burlington altimeter setting. For uncompensated Baro-VNAV systems, LNAV/VNAV NA below -16°C (4°F) or above 54°C (130°F). DME/DME RNP -0.3 NA. Helicopter visibility reduction below 1 SM NA. When local altimeter setting not received, use Burlington altimeter setting and increase all DA 59 feet and all MDA 60 feet, increase LNAV and Circling Cat C visibility ¼ mile. Rwy 14 Straight-in and Circling and Circling to Rwy 32 NA at night.

⚠ MISSED APPROACH: Climb to 2700 direct CIMOD and hold.

| | | |
|--------------------------|--|---------------------------------|
| AWOS-3 118.375 | KANSAS CITY CENTER 126.225 317.775 | UNICOM 122.8 (CTAF) 1 |
|--------------------------|--|---------------------------------|

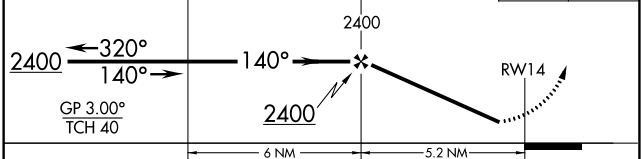


| | |
|----------|----------|
| ELEV 672 | TDZE 671 |
|----------|----------|



5 NM Holding Pattern VGSi and RNAV glidepath not coincident (VGSi Angle 3.00/TCH 36).

2700 CIMOD



| CATEGORY | A | B | C | D |
|--------------|---------|--------------|-------------------------|----|
| LPV DA | 949-1 | 278 (300-1) | | NA |
| LNAV/VNAV DA | 1040-1¼ | 369 (400-1¼) | | NA |
| LNAV MDA | 1040-1 | 369 (400-1) | | NA |
| CIRCLING | 1180-1 | 508 (600-1) | 1220-1½ 548 (600-1½) | NA |

NC-3, 05 NOV 2020 to 03 DEC 2020

NC-3, 05 NOV 2020 to 03 DEC 2020