

LOM CI	APP CRS	Rwy Idg	7203
400	337°	TDZE	796
		Apt Elev	799

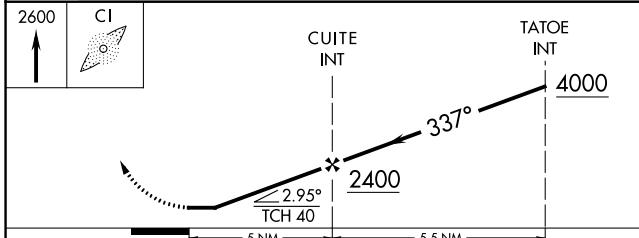
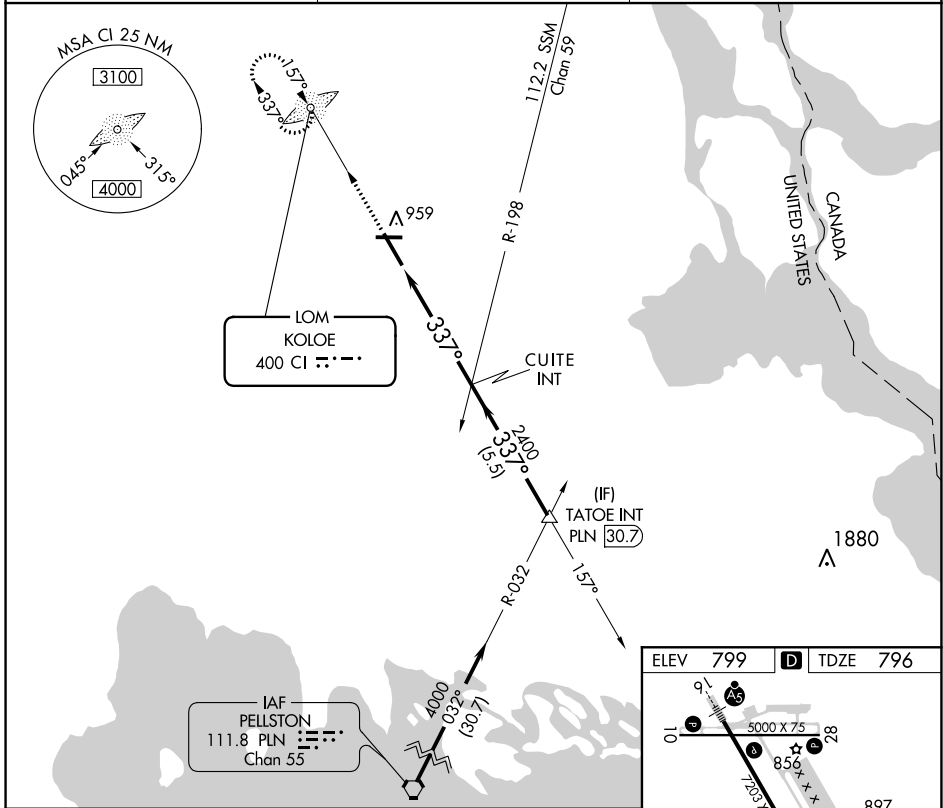
NDB RWY 34

CHIPPEWA COUNTY INTL (CIU)

⚠ When local altimeter setting not received, use Sault-Ste Marie Muni/Sanderson Field altimeter setting and increase all MDA 60 feet and increase S-34 Cat C/D visibility to 1 3/8.

⚠ NA MISSED APPROACH: Climb to 2600 direct KOLOE LOM and hold.

AWOS-3PT 127.575	TORONTO CENTER 132.65 344.5	UNICOM 123.0 (CTAF) 📻
----------------------------	---------------------------------------	--



ELEV	799	D	TDZE	796
------	-----	----------	------	-----

5000 X 75

28

856

7203 X 150

337° 5 NM from FAF

897

REIL Rwy 10, 28 and 34 **📻**

MIRL Rwy 10-28 **📻**

HIRL Rwy 16-34 **📻**

FAF to MAP 5 NM

Knots	60	90	120	150	180
Min:Sec	5:00	3:20	2:30	2:00	1:40

CATEGORY	A	B	C	D
S-34	1220-1	424 (500-1)	1220-1 1/4	424 (500-1 1/4)
C CIRCLING	1260-1	461 (500-1)	1260-1 1/2	1360-2 461 (500-1 1/2) 561 (600-2)

EC-1, 05 NOV 2020 to 03 DEC 2020

EC-1, 05 NOV 2020 to 03 DEC 2020