

MARYSVILLE, CALIFORNIA


# TACAN Y RWY 15

TACAN BAB Chan 23	APCH CRS 153°	Rwy ldg 12,001
		TDZE 113
		Arprt Elev 113

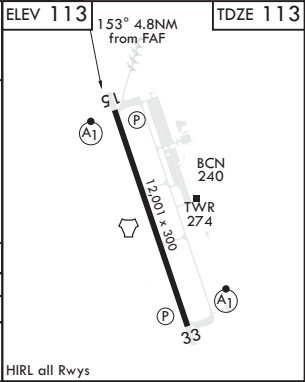
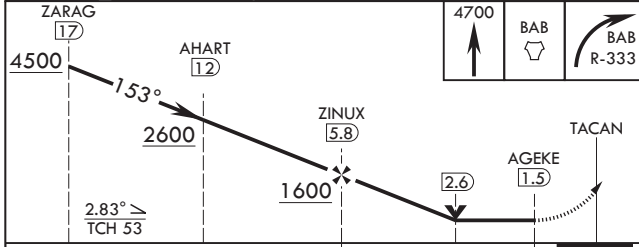
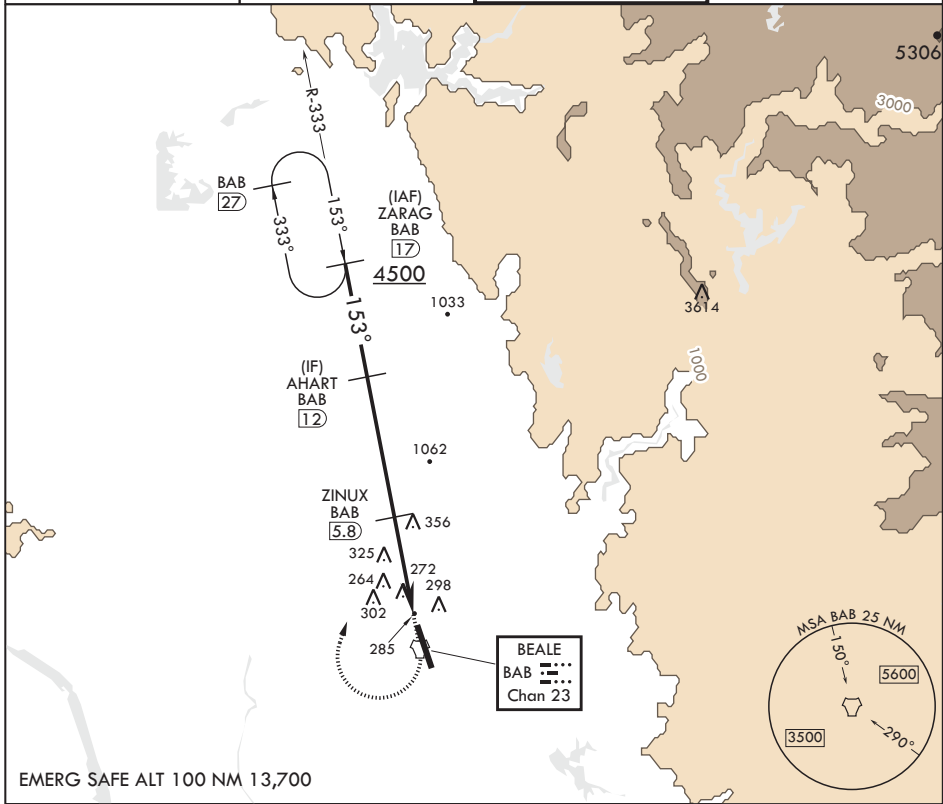
AL-771 (USAF)

BEALE AFB (KBAB)

**▼** \* When ALS inop, increase CAT AB RVR to 55 and vis to 1 mile, CAT CDE vis to 1 1/2 miles.  
 \*\* Circling not authorized E of Rwy 15-33.

**ALSF-1**  
  
**MISSED APPROACH:** Climb to 4700 direct to BAB TACAN. Turn right to intercept BAB R-333 to ZARAG and hold, continue climb in hold to 4700.

ATIS* 124.55 273.5	NORCAL APP CON 125.4 259.1	TOWER* 119.4 284.75	GND CON 121.6 257.75
-----------------------	-------------------------------	------------------------	-------------------------



CATEGORY	A	B	C	D	E
S-15*	640/24 527 (600-1/2)		640/55 527 (600-1)		
<b>C</b> CIRCLING**	640-1 527 (600-1)		640-1 1/2 527 (600-1 1/2)	680-2 567 (600-2)	840-2 1/2 727 (800-2 1/2)

HIRL all Rwys

MARYSVILLE, CALIFORNIA

39°08'N - 121°26'W

BEALE AFB (KBAB)

Amdt 5 20JUL17

# TACAN Y RWY 15

SW-2, 05 NOV 2020 to 03 DEC 2020

SW-2, 05 NOV 2020 to 03 DEC 2020