

MARYSVILLE, CALIFORNIA

# HI-ILS or LOC Z RWY 33

LOC I-MIZ <b>109.5</b>	APCH CRS <b>325°</b>	Rwy ldg <b>12,001</b>
		TDZE <b>105</b>
		Arprt Elev <b>113</b>

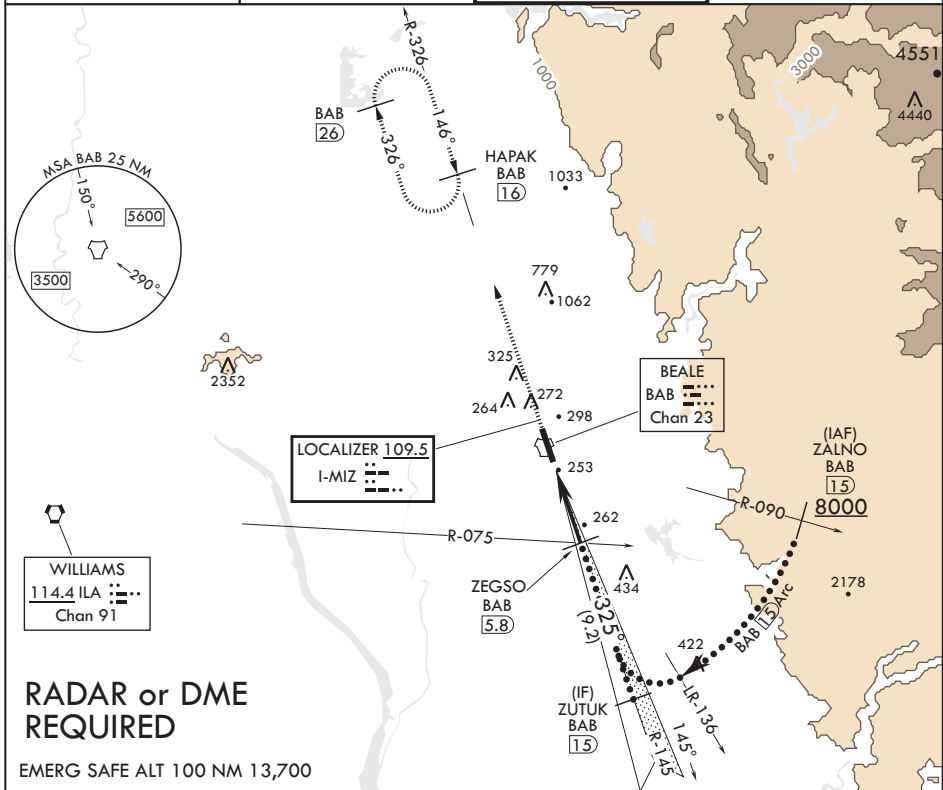
JAL-771 (USAF)

BEALE AFB (KBAB)

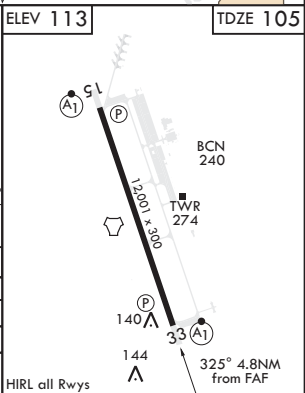
\* When ALS inop, increase CAT CDE RVR to 40 and vis to 3/4 mile.  
 \*\* When ALS inop, increase CAT CDE RVR to 60 vis to 1 1/8 miles.  
 \*\*\* Circling not authorized E of Rwy 15-33.

ALSF-1  
 MISSED APPROACH: Climb to 3600 intercept BAB R-326 to HAPAK and hold.

ATIS* <b>124.55 273.5</b>	NORCAL APP CON <b>125.4 259.1</b>	TOWER* <b>119.4 284.75</b>	GND CON <b>121.6 257.75</b>
------------------------------	--------------------------------------	-------------------------------	--------------------------------



3600 ↑ BAB R-326	HAPAK BAB 16	ZUTUK BAB R-145 15	ZALNO BAB R-090 15	ELEV 113	TDZE 105
†LOC only TACAN ZAPUX 1.5 †2.1 ZEGSO ILA R-075 BAB 5.8 325° 3200 1700 GS 3.00° TCH 51 15 Arc 8000					
CATEGORY		C	D	E	
S-ILS 33*		305/24	200	(200-1/2)	
S-LOC 33**		520/40	415	(500-3/4)	
C CIRCLING***		600-1 1/2 487 (500-1 1/2)	680-2 567 (600-2)	840-2 1/2 727 (800-2 1/2)	



MARYSVILLE, CALIFORNIA

39°08'N - 121°26'W

BEALE AFB (KBAB)

Amdt 5 20JUL17

# HI-ILS or LOC Z RWY 33

SW-2, 05 NOV 2020 to 03 DEC 2020

SW-2, 05 NOV 2020 to 03 DEC 2020