

WAAS CH 77530 W17B	APP CRS 175°	Rwy Idg 12250 TDZE 542 Apt Elev 542
--	------------------------	--

RNAV (GPS) Y RWY 17R

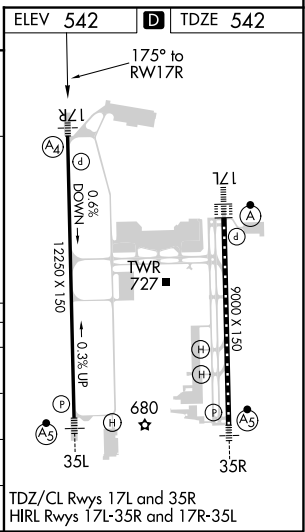
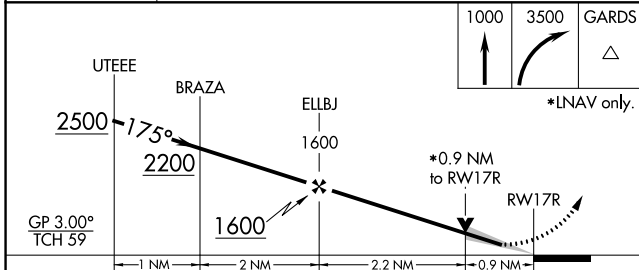
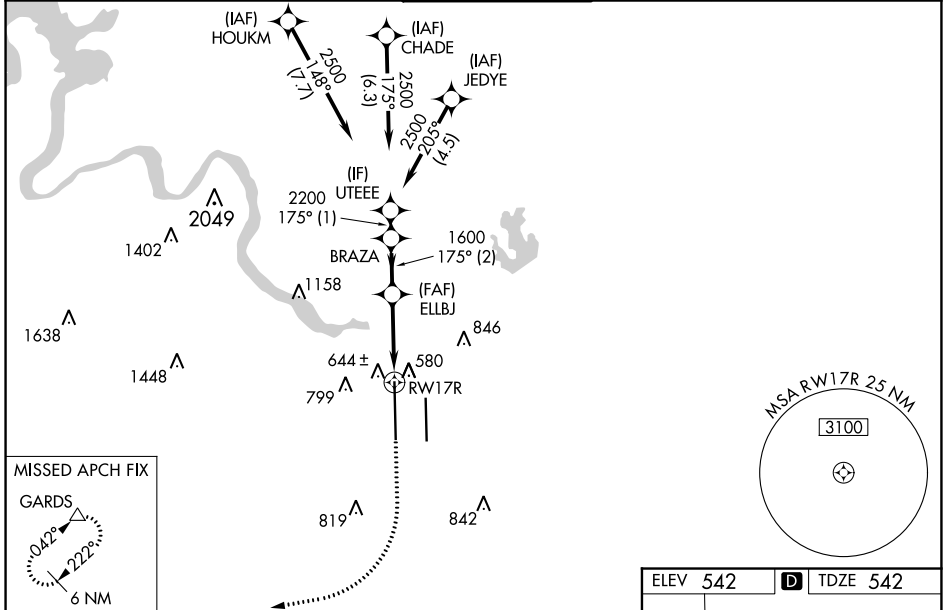
AUSTIN-BERGSTROM INTL (AUS)

▼ For uncompensated Baro-VNAV systems, LNAV/VNAV NA below -6°C (22°F) or above 54°C (130°F). Simultaneous approach authorized. LNAV procedure NA during simultaneous operations. Use of FD or AP providing RNAV track guidance required during simultaneous operations. DME/DME RNP-0.3 NA. For inop ALS, increase LNAV/VNAV all Cats visibility to RVR 4500. Increase LNAV visibility all Cats to RVR 5500.

MALS
④ =

MISSED APPROACH: Climb to 1000 then climbing right turn to 3500 direct GARDS and hold.

D-ATIS 124.4	AUSTIN APP CON 127.225 317.65 (EAST) 120.875 270.25 (SOUTH) 119.0 370.85 (WEST)	AUSTIN TOWER 121.0 281.5	GND CON 121.9 348.6	CLNC DEL 125.5 263.0	CPDLC
------------------------	---	------------------------------------	-------------------------------	--------------------------------	-------



CATEGORY	A	B	C	D	E
LPV DA		742/40	200 (200-¾)		
LNAV/VNAV DA		834/40	292 (300-¾)		
LNAV MDA		900/40	358 (400-¾)		
CIRCLING	1040-1 498 (500-1)	1100-1 558 (600-1)	1200-1¾ 658 (700-1¾)	1200-2 658 (700-2)	1520-3 978 (1000-3)

TDZ/CL Rwsy 17L and 35R
HIRL Rwsy 17L-35R and 17R-35L