

RNAV (RNP) Z RWY 35R

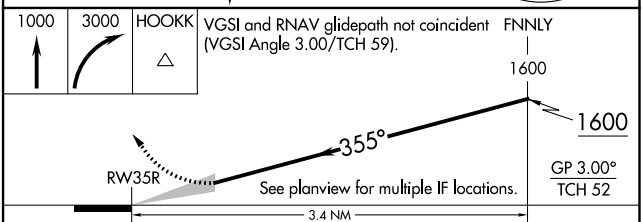
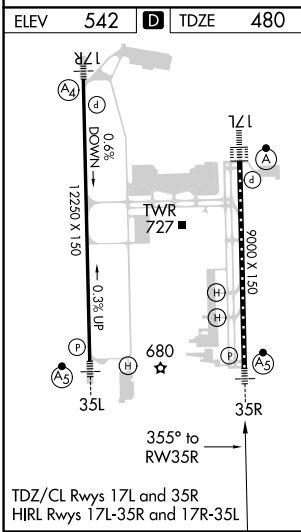
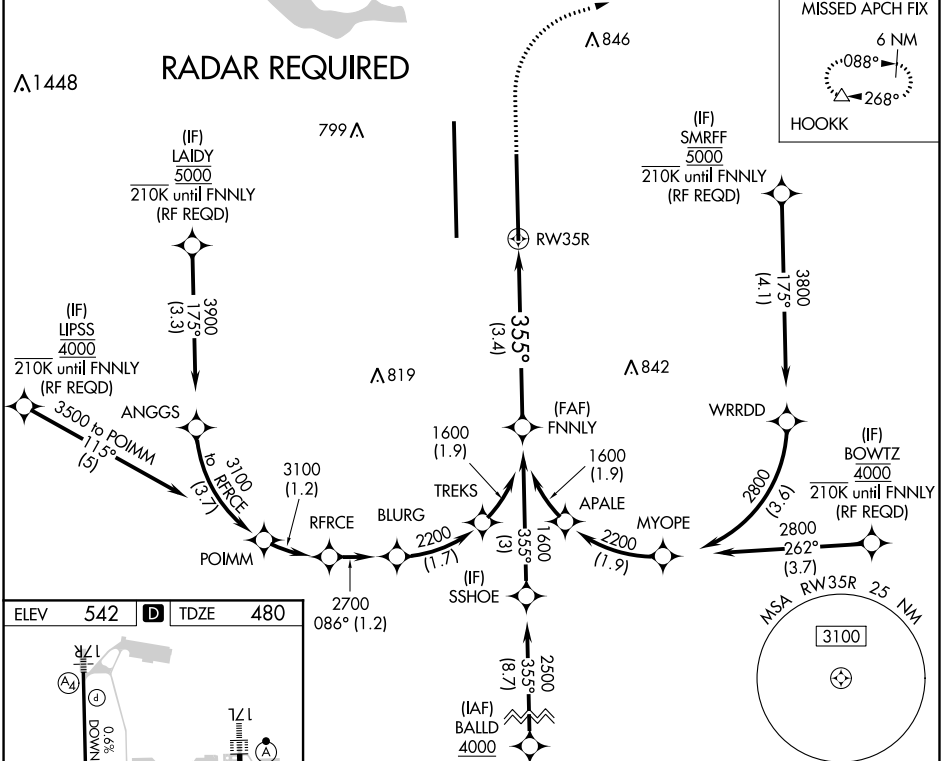
AUSTIN-BERGSTROM INTL (A US)

APP CRS	Rwy ldg	9000
355°	TDZE	480
	Apt Elev	542

▼ For uncompensated Baro-VNAV systems, procedure NA below -6°C (22°F) or above 54°C (130°F). Simultaneous approach authorized. GPS required. For inop ALS, increase RNP 0.11 all Cats visibility to RVR 4500.

MISSED APPROACH: Climb to 1000 then climbing right turn to 3000 direct HOOKK and hold.

D-ATIS	AUSTIN APP CON	AUSTIN TOWER	GND CON	CLNC DEL	CPDLC
124.4	127.225 317.65 (EAST) 120.875 270.25 (SOUTH) 119.0 370.85 (WEST)	121.0 281.5	121.9 348.6	125.5 263.0	



CATEGORY	A	B	C	D
RNP 0.11 DA		751/24	271 (300-½)	
RNP 0.16 DA		873/45	393 (400-¾)	
RNP 0.30 DA		951/60	471 (500-1¼)	

AUTHORIZATION REQUIRED

SC-3, 05 NOV 2020 to 03 DEC 2020

SC-3, 05 NOV 2020 to 03 DEC 2020