

LOC/DME I-VNK <b>110.5</b> Chan 42	APP CRS <b>175°</b>	Rwy Idg <b>9000</b> TDZE <b>492</b> Apt Elev <b>542</b>
--	------------------------	---

# ILS or LOC RWY 17L

AUSTIN-BERGSTROM INTL (AUS)

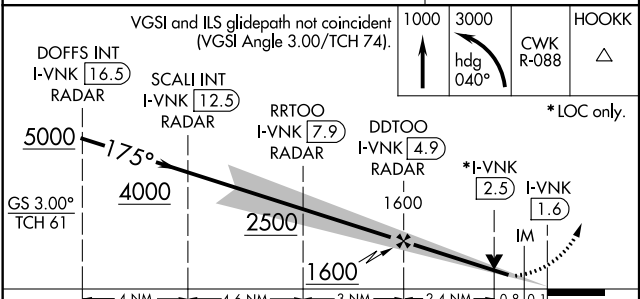
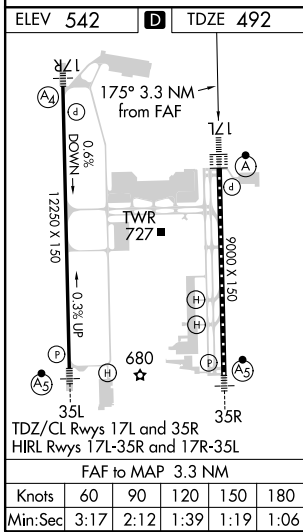
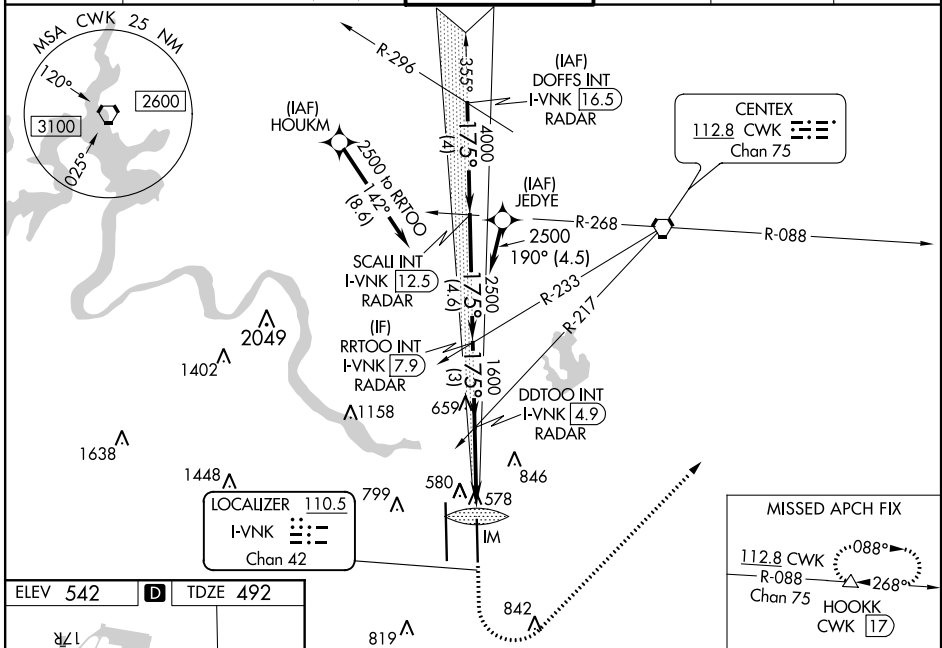
RNAV 1 - GPS or RADAR required for procedure entry.  
DME required.  
From HOUKM, JEDYE: RNAV 1 - GPS required.

⚠ Simultaneous approach authorized. For inop ALS, increase S-ILS 17L Cat E visibility to RVR 4000, and S-LOC 17L Cats C, D, E visibility to RVR 5500.



MISSED APPROACH: Climb to 1000, then climbing left turn to 3000 on heading 040° and CWK VORTAC R-088 to HOOKK/CWK 17 DME and hold.

D-ATIS <b>124.4</b>	AUSTIN APP CON <b>127.225 317.65</b> (EAST) <b>120.875 270.25</b> (SOUTH) <b>119.0 370.85</b> (WEST)	AUSTIN TOWER <b>121.0 281.5</b>	GND CON <b>121.9 348.6</b>	CLNC DEL <b>125.5 263.0</b>	CPDLC
------------------------	---	------------------------------------	-------------------------------	--------------------------------	-------



CATEGORY	A	B	C	D	E
S-ILS 17L	692/18 200 (200-½)				
S-LOC 17L	840/24	348 (300-½)	840/30	348 (300-¾)	
ⓐ CIRCLING	1040-1 498 (500-1)	1100-1 558 (600-1)	1200-1¾ 658 (700-1¾)	1200-2 658 (700-2)	1520-3 978 (1000-3)

SC-3, 05 NOV 2020 to 03 DEC 2020

SC-3, 05 NOV 2020 to 03 DEC 2020