

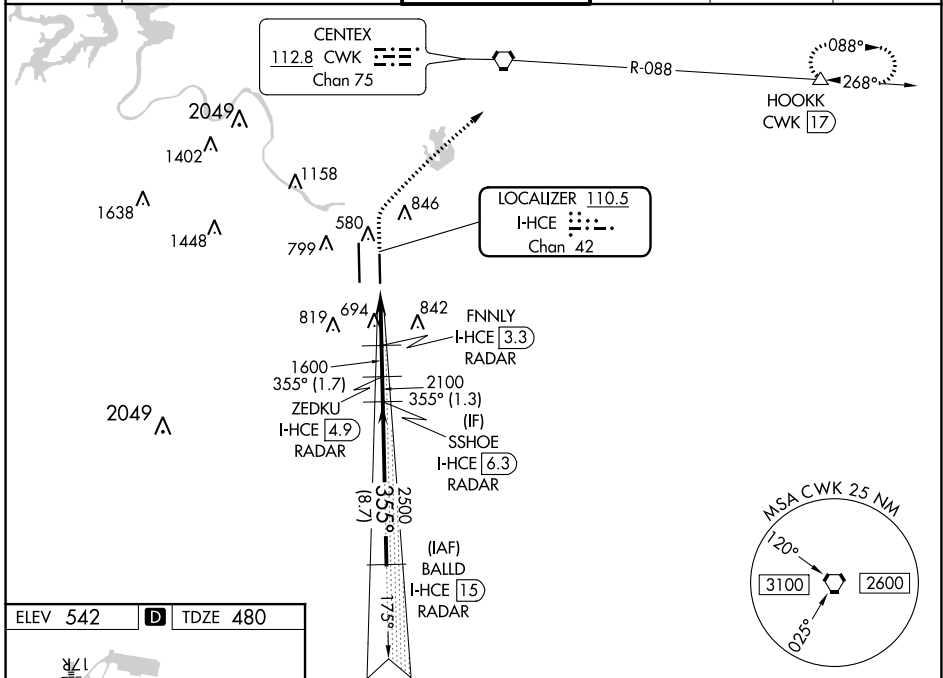
LOC/DME I-HCE <b>110.5</b> Chan <b>42</b>	APP CRS <b>355°</b>	Rwy Idg <b>9000</b>	TDZE <b>480</b>
		Apt Elev <b>542</b>	

# I LS RWY 35R (SA CAT I & II)

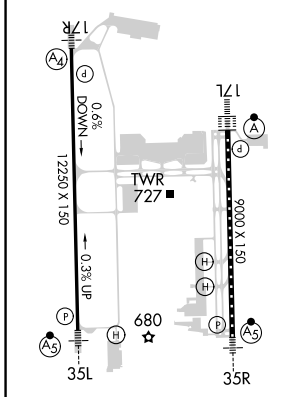
AUSTIN-BERGSTROM INTL (AUS)

DME required. RADAR required for procedure entry.		MALSR 	MISSED APPROACH: Climb to 1000 then climbing right turn to 3000 on heading 030° and CWK VORTAC R-088 to HOOKK/CWK 17 DME and hold.		
<p>Simultaneous approach authorized. SA CAT I: Requires specific OPSPEC, MSPEC or LOA approval and use of HUD to DH.</p> <p>SA CAT II: Reduced lighting: Requires specific OPSPEC, MSPEC or LOA approval and use of AUTOLAND or HUD to touchdown.</p>					

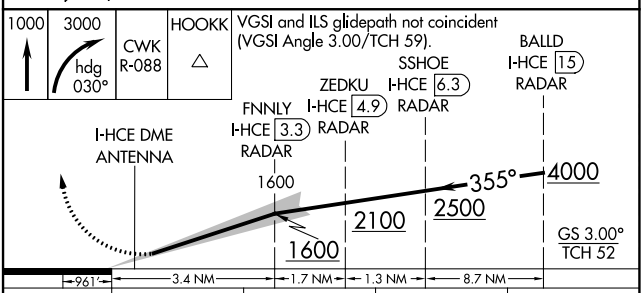
D-ATIS <b>124.4</b>	AUSTIN APP CON <b>127.225 317.65</b> (EAST) <b>120.875 270.25</b> (SOUTH) <b>119.0 370.85</b> (WEST)	AUSTIN TOWER <b>121.0 281.5</b>	GND CON <b>121.9 348.6</b>	CLNC DEL <b>125.5 263.0</b>	CPDLC
------------------------	---	------------------------------------	-------------------------------	--------------------------------	-------



ELEV <b>542</b>	<b>D</b>	TDZE <b>480</b>
-----------------	----------	-----------------



HIRL Rwy 17R-35L and 17L-35R  
TDZ/CL Rwy 17L and 35R



CATEGORY	A	B	C	D
S-ILS 35R	SA CAT I RA 235/14 150 DA 630			
S-ILS 35R	SA CAT II RA 110/12 100 DA 580			

## SA CATEGORY I & II ILS - SPECIAL AIRCREW & AIRCRAFT CERTIFICATION REQUIRED

SC-3, 05 NOV 2020 to 03 DEC 2020

SC-3, 05 NOV 2020 to 03 DEC 2020