

VORTAC TRM 116.2 Chan 109	APP CRS 316°	Rwy ldg TDZE Apt Elev	4995 -121 -115
---	------------------------	-----------------------------	---

VOR RWY 30

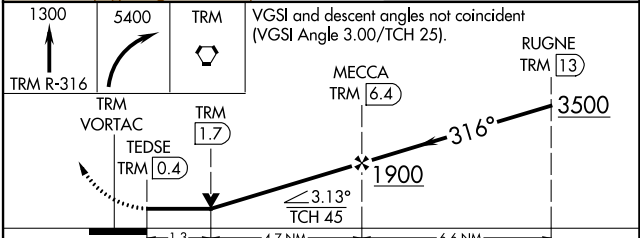
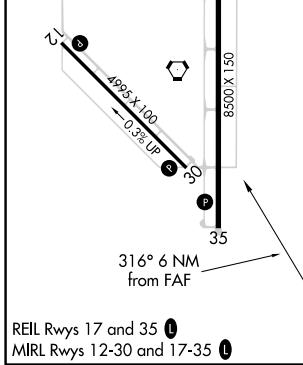
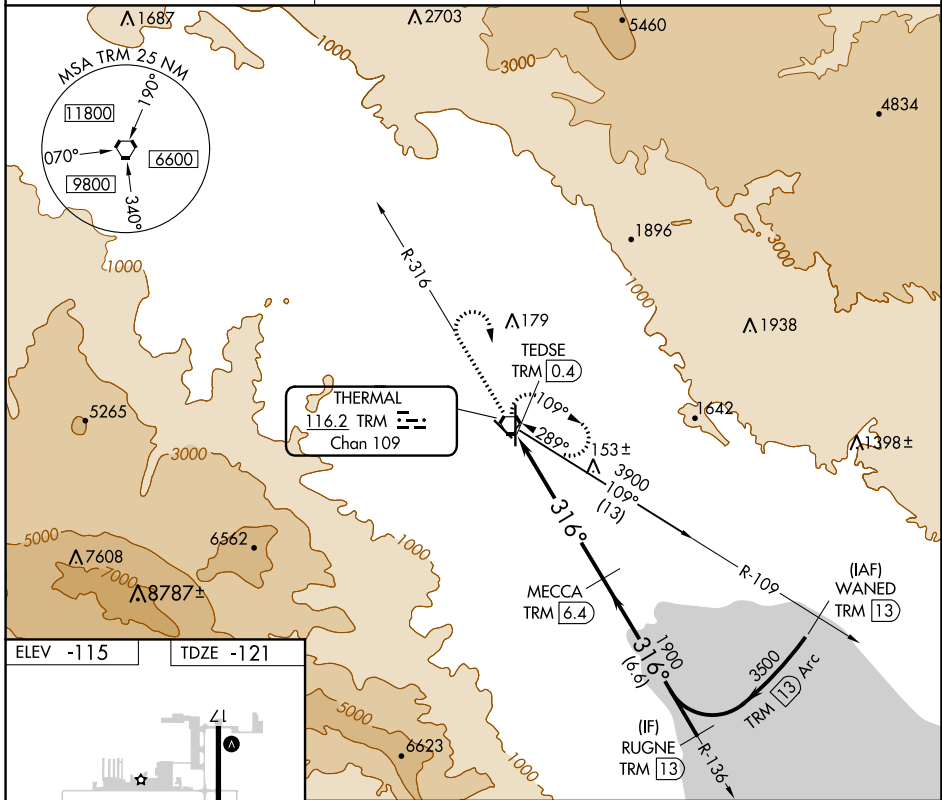
JACQUELINE COCHRAN RGNL (TRM)

DME required.

▼ Rwy 30 helicopter visibility reduction below $\frac{3}{4}$ SM NA.

MISSED APPROACH: Climb to 1300 on TRM VORTAC R-316 then climbing right turn to 5400 direct TRM VORTAC and hold, continue climb-in-hold to 5400.

ASOS 118.325	SOCAL APP CON* 135.275 251.1	UNICOM 123.0 (CTAF) ①
------------------------	--	--



CATEGORY	A	B	C	D
S-30	300-1	421 (500-1)	300-1½	421 (500-1½)
☑ CIRCLING	320-1 435 (500-1)	340-1 455 (500-1)	460-1½ 575 (600-1½)	780-3 895 (900-3)

SW-3, 05 NOV 2020 to 03 DEC 2020

SW-3, 05 NOV 2020 to 03 DEC 2020