

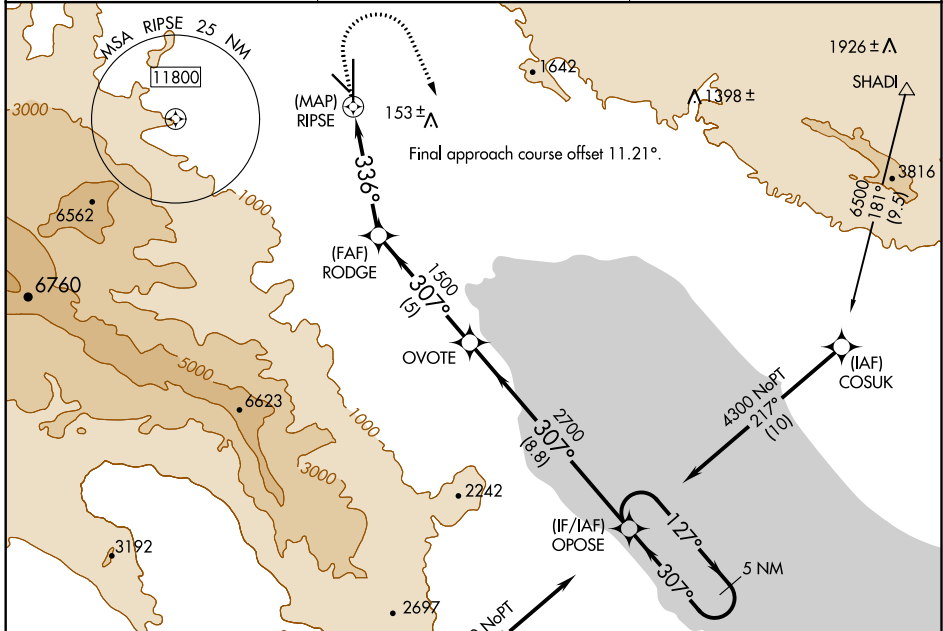
APP CRS	Rwy Idg	<b>8500</b>
<b>336°</b>	TDZE	<b>-128</b>
	Apt Elev	<b>-115</b>

# RNAV (GPS) RWY 35

JACQUELINE COCHRAN RGNL (TRM)

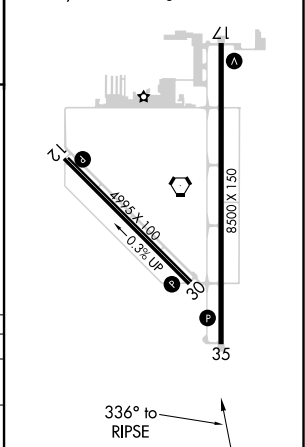
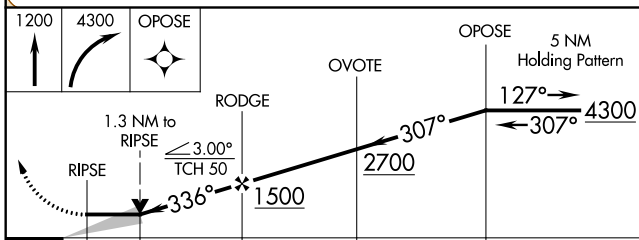
RNP APCH.	MISSED APPROACH: Climb to 1200 then climbing right turn to 4300 direct OPOSE and hold.
-----------	--

ASOS <b>118.325</b>	SOCAL APP CON * <b>135.275 251.1</b>	UNICOM <b>123.0 (CTAF) 0</b>
------------------------	---	---------------------------------



ELEV -115	TDZE -128
-----------	-----------

MIRL Rwy 12-30 and 17-35  
REIL Rwy 17 and 35



CATEGORY	A	B	C	D
LNVA MDA	440-1 568 (600-1)		940-3 1068 (1100-3)	
<b>C</b> CIRCLING	440-1 555 (600-1)		940-3 1055 (1100-3)	

SW-3, 05 NOV 2020 to 03 DEC 2020

SW-3, 05 NOV 2020 to 03 DEC 2020