

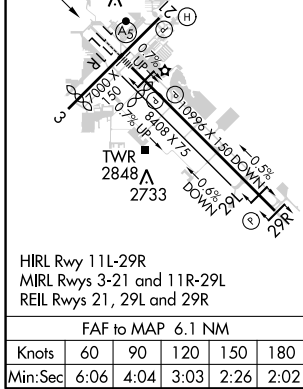
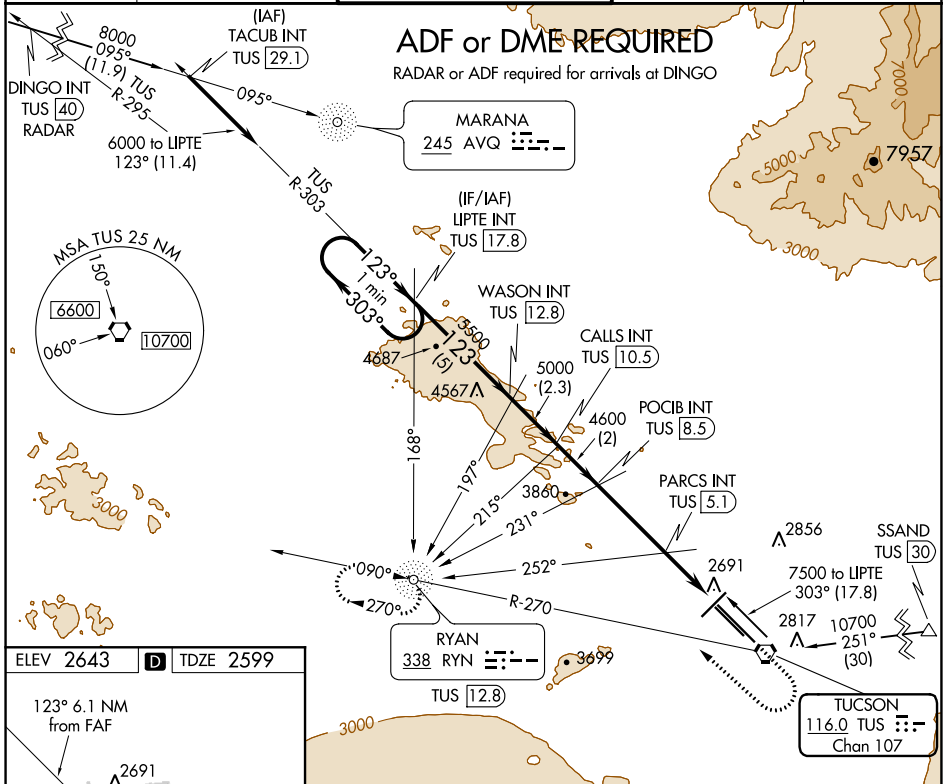
VORTAC TUS 116.0 Chan 107	APP CRS 123°	Rwy Idg 10996 TDZE 2599 Apt Elev 2643
---	------------------------	--

VOR or TACAN RWY 11L

TUCSON INTL (TUS)

<p>ADF or DME required. For inoperative ALS, increase Cat E visibility to 1¼ SM.</p>	<p>MALS R AS</p>	<p>MISSED APPROACH: Climb to 4000 then climbing right turn to 6000 (Cat. E 8000) on heading 300° and TUS VORTAC R-270 to RYN NDB/TUS 12.8 DME and hold.</p>
---	----------------------	---

<p>ATIS 123.8 279.65</p>	<p>TUCSON APP CON 119.4 318.1</p>	<p>TUCSON TOWER 118.3 257.8</p>	<p>GND CON 124.4 348.6</p>	<p>CLNC DEL 126.65 326.2</p>
-------------------------------------	--	--	---------------------------------------	---



One Minute Holding Pattern	LIPTÉ INT TUS 17.8	WASON INT TUS 12.8	CALLS INT TUS 10.5	POCIB INT TUS 8.5	PARCS INT TUS 5.1	TUS 2.4	RYN
	6000	5500	5000	4600	3480		
VGSI and descent angles not coincident (VGSI Angle 3.00/TCH 73).							
CATEGORY	A	B	C	D	E		
S-11L	3020/24	421 (500-½)	3020/40	421 (500-¾)			
CIRCLING	3160-1	517 (500-1)	3220-1½ 577 (600-1½)	3220-2 577 (600-2)	3800-3 1157 (1200-3)		