

RNAV (RNP) Y RWY 29R

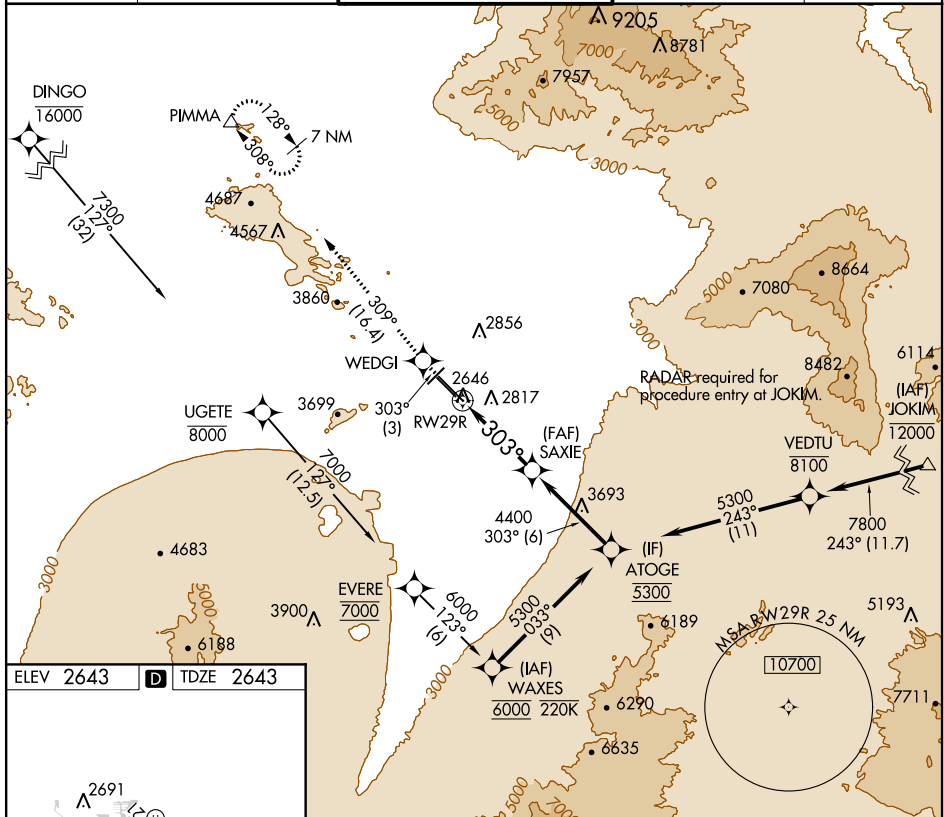
TUCSON INTL (TUS)

APP CRS 303°	Rwy Idg 10996
	TDZE 2643
	Apt Elev 2643

▼ When VGSI inop, procedure NA at night. GPS required. For uncompensated Baro-VNAV systems, procedure NA below -5°C (23°F) or above 43°C (110°F).
▲ NA Rwy 29R helicopter visibility reduction below ¼ SM NA.

MISSED APPROACH: Climb to 6500 on 303° track to WEDGI 309° track to PIMMA and hold.

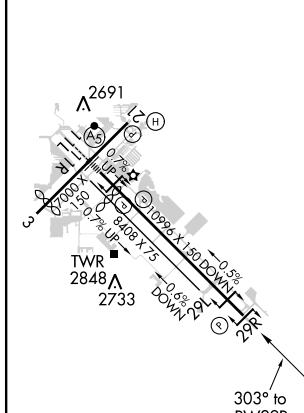
ATIS 123.8 279.65	TUCSON APP CON 119.4 318.1	TUCSON TOWER 118.3 257.8	GND CON 124.4 348.6	CLNC DEL 126.65 326.2
-----------------------------	--------------------------------------	------------------------------------	-------------------------------	---------------------------------



SW-4, 05 NOV 2020 to 03 DEC 2020

SW-4, 05 NOV 2020 to 03 DEC 2020

ELEV 2643	D	TDZE 2643
-----------	----------	-----------



HIRL Rwy 11L-29R
 MIRL Rws 3-21 and 11R-29L
 REIL Rws 21, 29L and 29R

6500	WEDGI	309° tr	PIMMA	VGSI and RNAV glidepath not coincident (VGSI Angle 3.00/TCH 81).	ATOGE	Procedure Turn NA
				SAXIE		
				4400		
				5300		
						GP 3.00° TCH 53
				5.3 NM	6 NM	
CATEGORY	A	B	C	D		
RNP 0.30 DA		3137-1½	494 (500-1½)			

AUTHORIZATION REQUIRED