

BURRO FOUR DEPARTURE (RNAV)

AL-430 (FAA)

TUCSON INTL (TUS)
TUCSON, ARIZONA

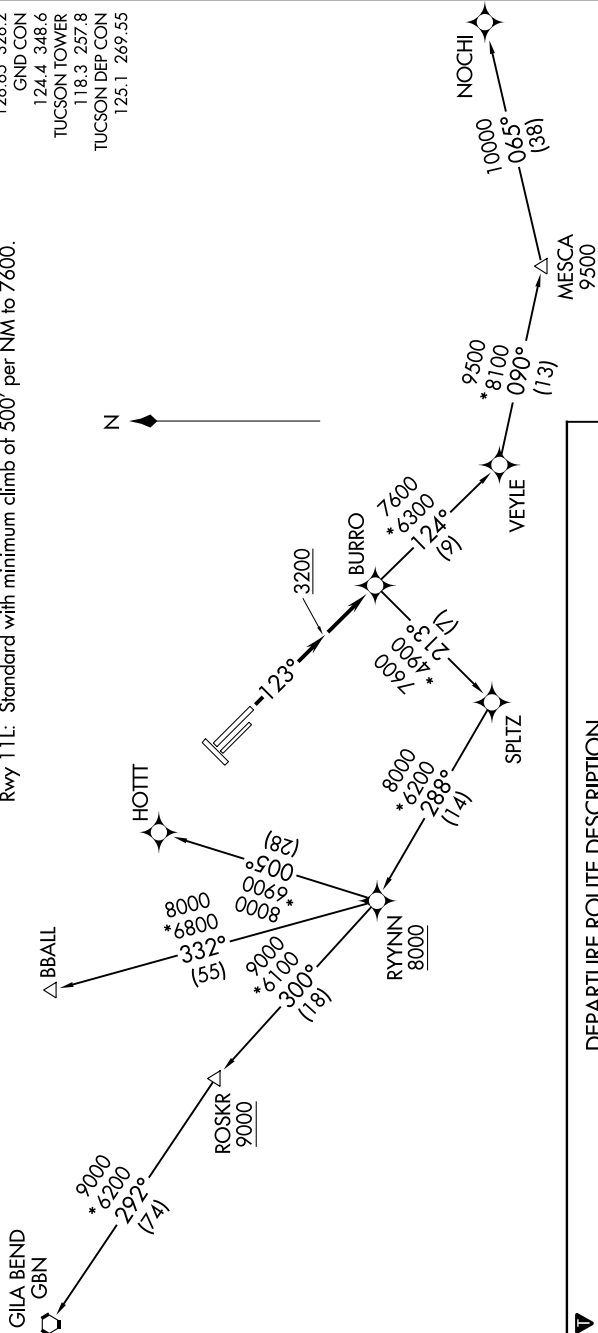
ATIS
123.8 279.65
CLNC DEL
126.65 326.2
GND CON
124.4 348.6
TUCSON TOWER
118.3 257.8
TUCSON DEP CON
125.1 269.55

TAKEOFF MINIMUMS

Rwys 3, 11R, 21, 29L, 29R: NA - ATC.

Rwy 11L: Standard with minimum climb of 500' per NM to 7600.

**TOP ALTITUDE:
17000**



NOTE: GPS required.
NOTE: RNAV 1.
NOTE: Chart not to scale.

DEPARTURE ROUTE DESCRIPTION

TAKEOFF RUNWAY 11L: Climb heading 123° to 3200 MSL, then direct BURRO, thence . . .
 . . . via (transition) maintain 17000, expect filed altitude 10 minutes after departure.
 BBALL TRANSITION (BURRO4.BBALL)
 GILA BEND TRANSITION (BURRO4.GBN)
 HOTT TRANSITION (BURRO4.HOTT)
 NOCHI TRANSITION (BURRO4.NOCHI)