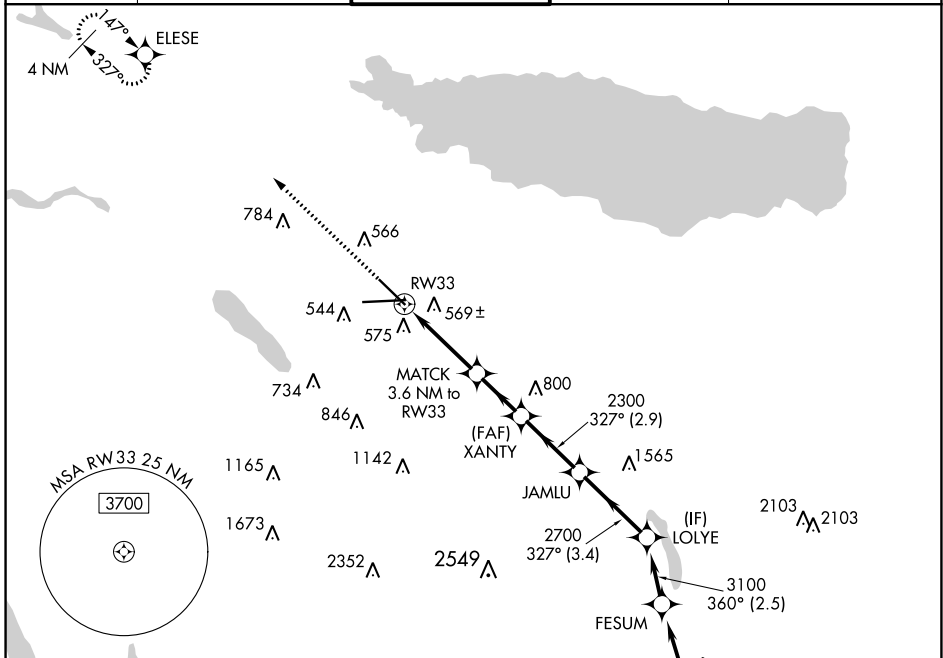


WAAS CH <b>81823</b> <b>W33A</b>	APP CRS <b>327°</b>	Rwy Idg TDZE Apt Elev	<b>7500</b> <b>409</b> <b>421</b>
--	------------------------	-----------------------------	---

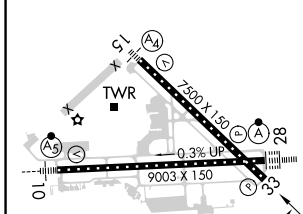
# RNAV (GPS) RWY 33

SYRACUSE HANCOCK INTL (SYR)

RNP APCH.		SYRACUSE TOWER <b>120.3 239.0</b>		GND CON <b>121.7 348.6</b>	CLNC DEL <b>125.05 257.775</b>
▼ Rwy 33 helicopter visibility reduction below 3/4 SM NA. For uncompensated ▲ Baro-VNAV systems, LNAV/VNAV NA below -20°C or above 54°C.				MISSED APPROACH: Climb to 3000 direct ELESE and hold.	
ATIS <b>124.225</b>	SYRACUSE APP CON <b>126.125 269.125</b>	SYRACUSE TOWER <b>120.3 239.0</b>		GND CON <b>121.7 348.6</b>	CLNC DEL <b>125.05 257.775</b>



ELEV 421	<b>D</b>	TDZE 409
----------	----------	----------



3000	ELESE	XANTY	JAMLU	LOLYE
↑	◆	◆	◆	◆
* LNAV only	* 1.1 NM to RW33	2300	2700	3100
◆	◆	◆	◆	◆
1.1 NM	2.5 NM	2.2 NM	2.9 NM	3.4 NM
1580*	2300	2700	3100	GP 3.00° TCH 50

CATEGORY	A	B	C	D
LPV DA		715/45	306 (300-7/8)	
LNAV/VNAV DA		882-1 3/8	473 (500-1 3/8)	
LNAV MDA	820/55	411 (400-1)	820/60	411 (400-1 1/4)
<b>C</b> CIRCLING	900-1 479 (500-1)	920-1 499 (500-1)	1020-1 1/2 599 (600-1 1/2)	1180-2 1/2 759 (800-2 1/2)

TDZ/CL Rwy 28  
HIRL Rwy 10-28 and 15-33

NE-2, 05 NOV 2020 to 03 DEC 2020

NE-2, 05 NOV 2020 to 03 DEC 2020