

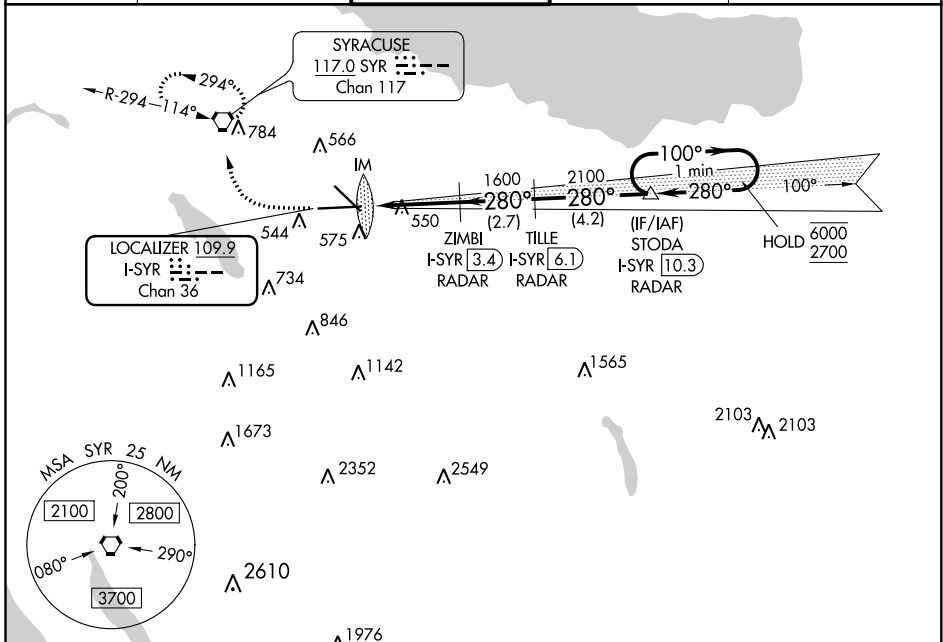
LOC/DME I-SYR 109.9 Chan 36	APP CRS 280°	Rwy Idg TDZE Apt Elev	9003 413 421
---	------------------------	-----------------------------	---

ILS RWY 28 (SA CAT I)

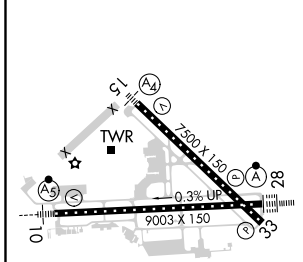
SYRACUSE HANCOCK INTL (SYR)

DME or RADAR required.	ALS-F2	MISSED APPROACH: Climb to 1100 then climbing right turn to 3000 direct SYR VORTAC and hold, continue climb-in-hold to 3000.
Requires specific OPSPEC, MSPEC, or LOA approval and use of HUD to DH.		

ATIS 124.225	SYRACUSE APP CON 126.125 269.125	SYRACUSE TOWER 120.3 239.0	GND CON 121.7 348.6	CLNC DEL 125.05 257.775
------------------------	--	--------------------------------------	-------------------------------	-----------------------------------



ELEV 421	D	TDZE 413
----------	----------	----------



1100	3000	SYR	STODA I-SYR 10.3 RADAR	One Minute Holding Pattern
			ZIMBI I-SYR 3.4 RADAR	
			TILLE I-SYR 6.1 RADAR	
			I-SYR 0.2	
			I-SYR DME ANTENNA	
			IM	
			1600	
			2100	
			280°	
			100°	
			6000	
			2700	
			GS 3.00°	
			TCH 60	

CATEGORY	A	B	C	D
S-ILS 28	RA 150/14		150 DA	563

SA CATEGORY I ILS - SPECIAL AIRCREW & AIRCRAFT CERTIFICATION REQUIRED

TDZ/CL Rwy 28
HIRL Rwy 10-28 and 15-33

NE-2, 05 NOV 2020 to 03 DEC 2020

NE-2, 05 NOV 2020 to 03 DEC 2020