

APP CRS	Rwy Idg	9120
135°	TDZE	18
	Apt Elev	22

RNAV (RNP) Z RWY 14R

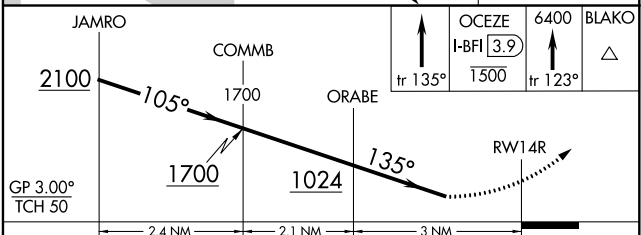
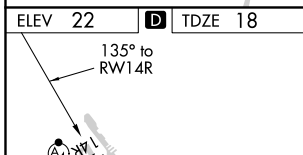
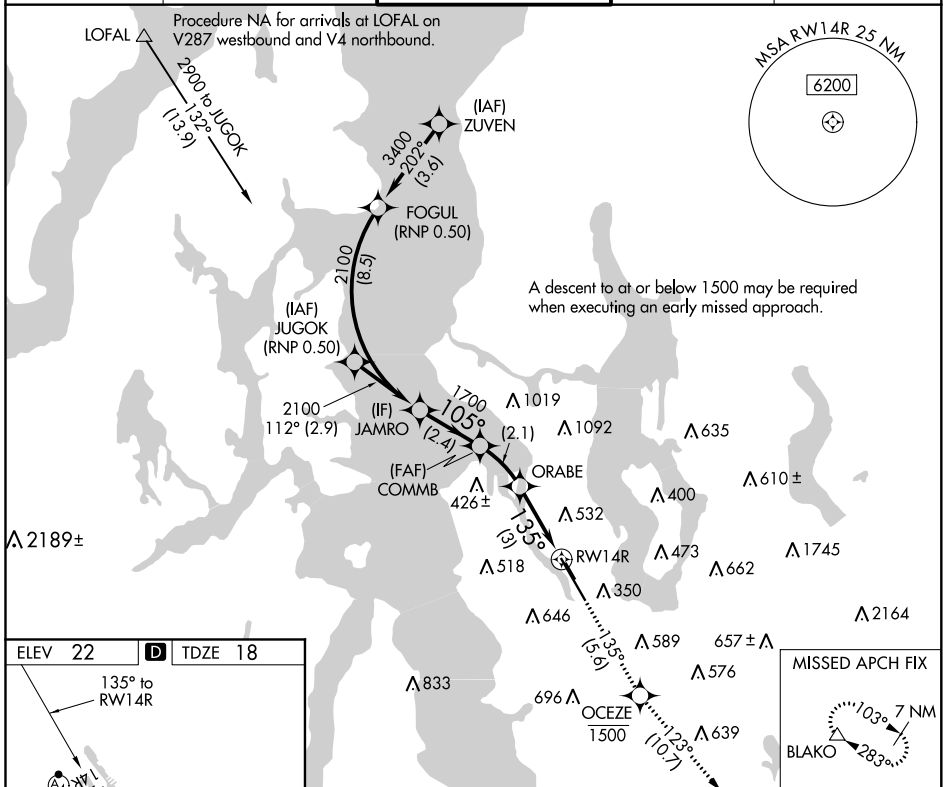
BOEING FIELD/KING COUNTY INTL (BFI)

▼ GPS and RF required. Inop table does not apply to RNP 0.30 DA.
▲ For inop MALSIF, increase RNP 0.15 DA Cat D visibility to 1¼ mile.
 For uncompensated Baro-VNAV systems, procedure NA below -6°C (22°F) or above 54°C (130°F).



MISSED APPROACH: Climb on track 135° to cross OCEZE at or below 1500 then climb to 6400 on track 123° to BLAKO and hold, continue climb-in-hold to 6400.

ATIS	SEATTLE APP CON	BOEING TOWER	GND CON	CLNC DEL
127.75	119.2 284.7	120.6 257.8	121.9	132.4



CATEGORY	A	B	C	D
RNP 0.15 DA		542-1½	524 (600-1½)	
RNP 0.30 DA		742-2½	724 (800-2½)	

AUTHORIZATION REQUIRED

MIRL Rwy 14L-32R
 HIRL Rwy 14R-32L
 REIL Rwy 14L, 32L and 32R

NW-1, 05 NOV 2020 to 03 DEC 2020

NW-1, 05 NOV 2020 to 03 DEC 2020