

WAAS CH 86325 W03A	APP CRS 033°	Rwy Idg TDZE Apt Elev	8502 7284 7284
--	------------------------	-----------------------------	---

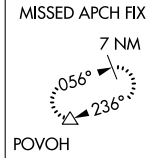
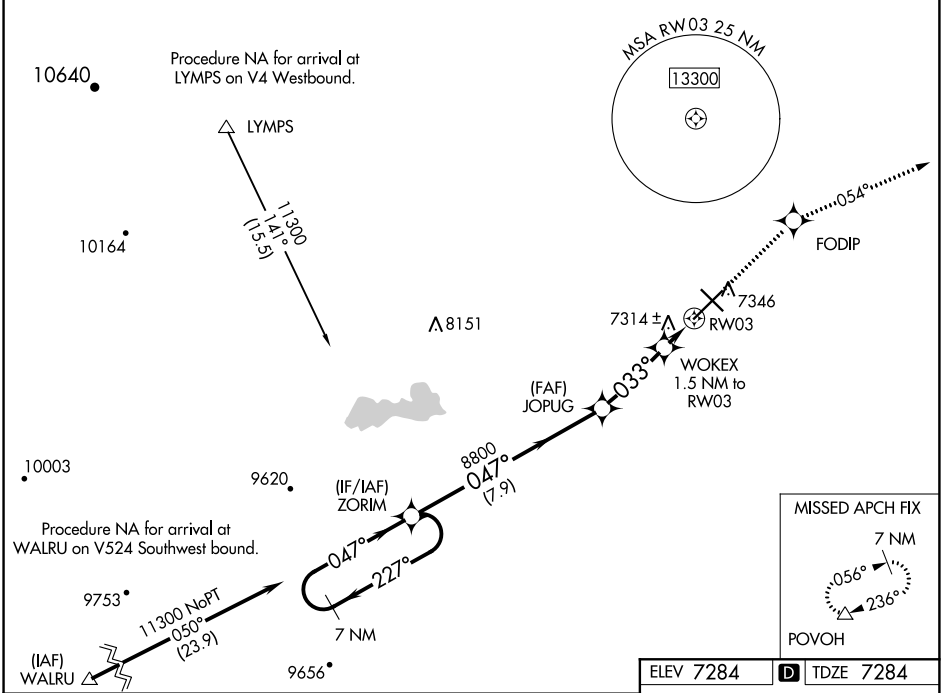
RNAV (GPS) RWY 3

LARAMIE RGNL (L.A.R.)

⚠ DME/DME RNP-0.3 NA. Circling to Rwy 30 NA at night. Baro-VNAV NA. Helicopter visibility reduction below 3/4 SM NA.

⚠ MISSED APPROACH: Climb to 11000 direct FODIP and on track 054° to POVOH and hold, continue climb-in-hold to 11000.

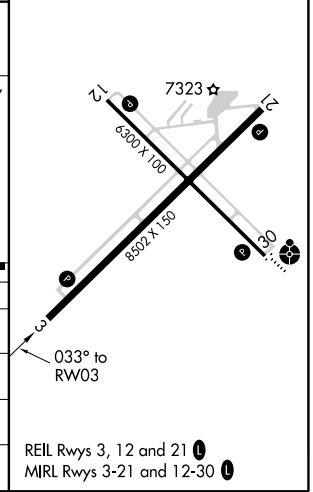
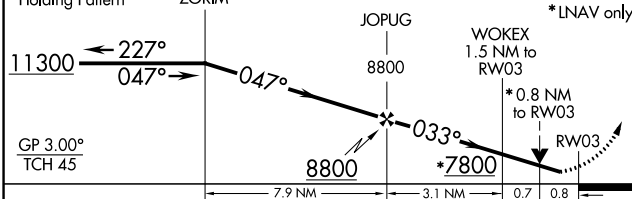
ASOS 135.475	DENVER CENTER 125.9 284.7	UNICOM 123.05 (CTAF) 0
------------------------	-------------------------------------	----------------------------------



ELEV 7284	D TDZE 7284
-----------	--------------------

VGSI and RNAV Glidepath not coincident (VGSI Angle 3.00/TCH 32).

7 NM Holding Pattern ZORIM



CATEGORY	A	B	C	D
LPV DA		7534-3/4	250 (300-3/4)	
LNAV/VNAV DA		7534-3/4	250 (300-3/4)	
LNAV MDA	7580-1	296 (300-1)	7580-7/8	296 (300-7/8)
CIRCLING	7660-1 376 (400-1)	7740-1 456 (500-1)	7740-1 1/2 456 (500-1 1/2)	7840-2 556 (600-2)

NW-1, 05 NOV 2020 to 03 DEC 2020

NW-1, 05 NOV 2020 to 03 DEC 2020