


LOC I- HLN	APP CRS	Rwy Idg	9000
110.1	267°	TDZE	3852
		Apt Elev	3877

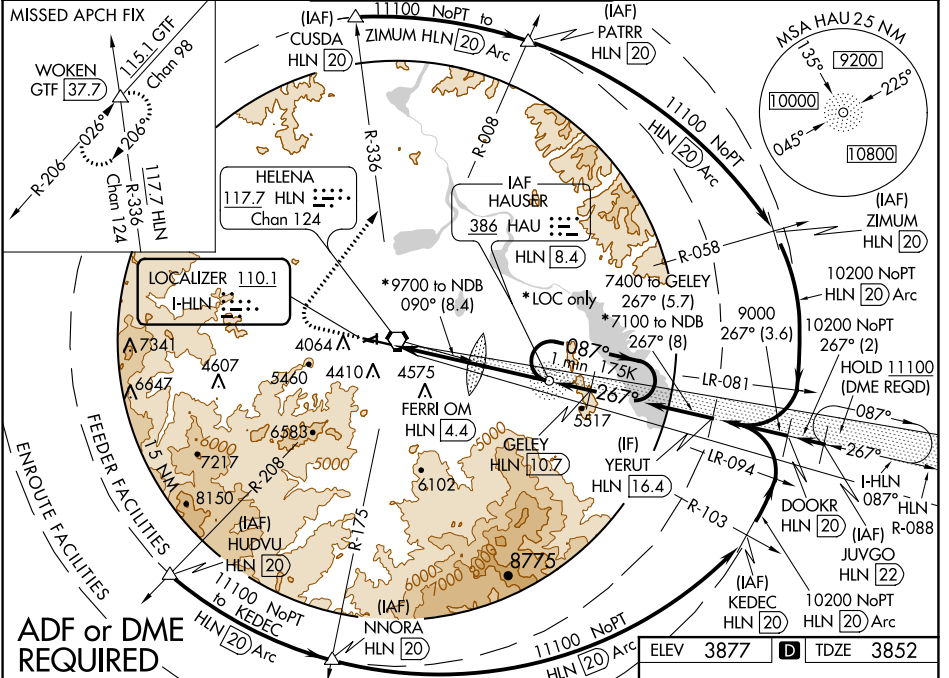
ILS or LOC Z RWY 27

HELENA RGNL (HLN)

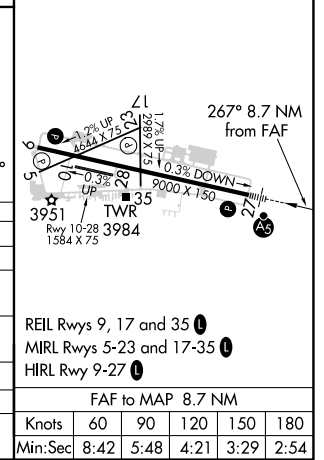
⚠ Inoperative table does not apply to S-LOC 27 Cat C/D/E. For inoperative MALSR, increase S-ILS 27 Cat E visibility to 3/4 mile, increase FERRI fix minimums: S-LOC 27 Cat C/D/E visibility to 1 1/8 miles. Missed approach requires a minimum climb of 300 ft per NM to 6000, if unable to meet climb gradient, see ILS or LOC Y RWY 27. Circling NA south of Rwy 9-27 for Cats D and E. Night Landing: Rwy 5, 23, 35 NA. DME from HLN VORTAC, simultaneous reception of I-**HLN** and HLN DME required. Holding at HAU NDB authorized for Cat A and B aircraft only.

MALSR

MISSED APPROACH:
 Climb to 4600 then climbing right turn to 9000 on heading 021° and HLN VORTAC R-336 to WOKEN/GTF 37.7 DME and hold.

ATIS 120.4	HELENA APP CON ★ 119.5 229.4	HELENA TOWER ★ 118.3 (CTAF) 0 257.8	GND CON 121.9	UNICOM 122.95
----------------------	--	---	-------------------------	-------------------------



4600	9000	WOKEN				
↑	hdg 021°	HLN R-336	HAU NDB	GELEY HLN 10.7	YERUT HLN 16.4	
*LOC only		FERRI OM HLN 4.4	HLN 8.4	7400	9000	
		5428	*7100	7400	GS 3.00°	TCH 55
		4.7 NM	4 NM	2.3 NM	5.7 NM	
CATEGORY	A	B	C	D	E	
S-ILS 27	4052-1/2		200 (200-1/2)			
S-LOC 27	5620-3/4 1768 (1800-3/4)	5620-1 1768 (1800-1)	5620-3	1768 (1800-3)		
CIRCLING	5620-1 1/4 1743 (1800-1 1/4)	5620-1 1/2 1743 (1800-1 1/2)	5920-3	2043 (2100-3)		
FERRI FIX MINIMUMS*						
S-LOC 27	4520-1/2	668 (700-1/2)	4520-1 1/2	668 (700-1 1/2)		
CIRCLING	4640-1 763 (800-1)	4800-1 1/4 923 (1000-1 1/4)	5920-3	2043 (2100-3)		



NW-1, 05 NOV 2020 to 03 DEC 2020

NW-1, 05 NOV 2020 to 03 DEC 2020

REIL Rwys 9, 17 and 35
 MIRL Rwys 5-23 and 17-35
 HIRL Rwy 9-27

FAF to MAP 8.7 NM					
Knots	60	90	120	150	180
Min:Sec	8:42	5:48	4:21	3:29	2:54