

LOC I-HLN 110.1	APP CRS 267°	Rwy ldg TDZE 3900 3852	Apt Elev 3877
---------------------------	------------------------	--	-------------------------

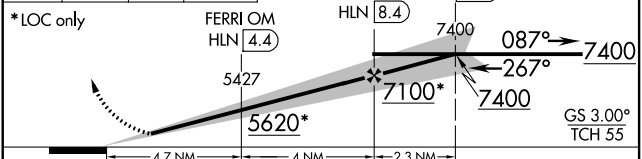
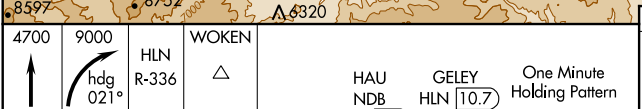
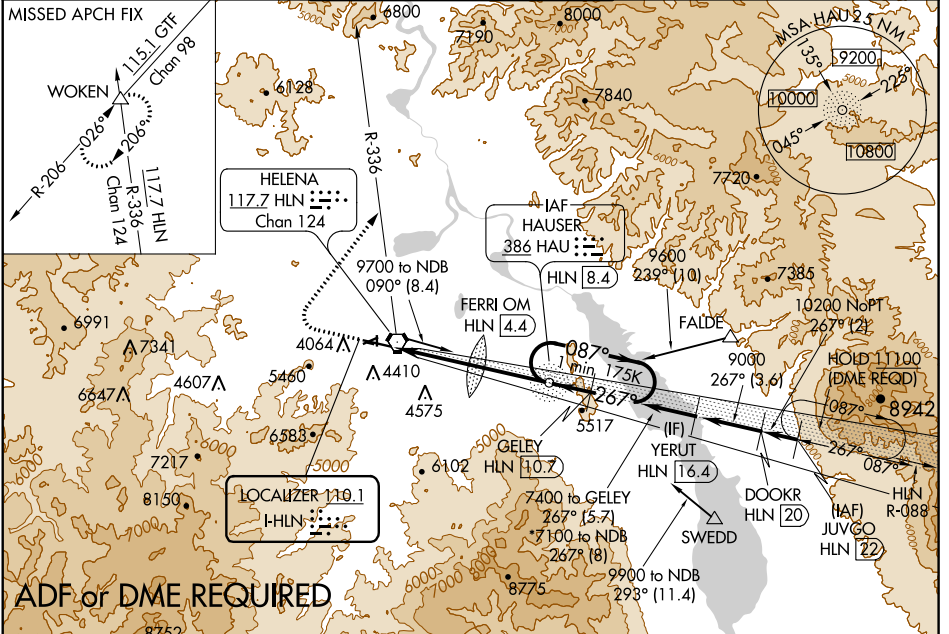
ILS or LOC Y RWY 27

HELENA RGNL (HLN)

⚠ Inoperative table does not apply to S-LOC 27 all Cats. For inoperative MALSR, increase S-ILS 27 all Cats visibility to 1 7/8 miles, FERRI FIX minimums: S-LOC 27 Cat C, D and E visibility to 2 miles. Holding at HAU NDB authorized for Category A and B aircraft only. Circling NA south of Rwy 9-27 for Cats D and E. Circling to Rwy 5, 23, 35 NA at night. DME from HLN VORTAC, simultaneous reception of I-HLN and HLN DME required.

MALS MISSED APPROACH: Climb to 4700 then climbing right turn to 9000 via heading 021° and HLN VORTAC R-336 to WOKEN INT and hold, continue climb-in-hold to 9000.

ATIS 120.4	HELENA APP CON * 119.5 229.4	HELENA TOWER * 118.3 (CTAF) 0 257.8	GND CON 121.9	UNICOM 122.95
----------------------	--	---	-------------------------	-------------------------



CATEGORY	A	B	C	D	E
S-ILS 27	4409-1 3/8		557 (600-1 1/8)		
S-LOC 27	5620-1 1/4 1768 (1800-1 1/4)	5620-1 1/2 1768 (1800-1 1/2)	5620-3		1768 (1800-3)
C CIRCLING	5620-1 1/4 1743 (1800-1 1/4)	5620-1 1/2 1743 (1800-1 1/2)	5920-3		2043 (2100-3)
FERRI FIX MINIMUMS*					
S-LOC 27	4580-1/2	728 (800-1/2)	4580-1 5/8	728 (800-1 5/8)	
C CIRCLING	4640-1 763 (800-1)	4800-1 1/4 923 (1000-1 1/4)	5920-3		2043 (2100-3)

ELEV 3877	D	TDZE 3852			
REIL Rwy 9, 17 and 35 MIRL Rwy 5-23 and 17-35 HIRL Rwy 9-27					
FAF to MAP 8.7 NM					
Knots	60	90	120	150	180
Min:Sec	8:42	5:48	4:21	3:29	2:54

NW-1, 05 NOV 2020 to 03 DEC 2020

NW-1, 05 NOV 2020 to 03 DEC 2020